

## Daily Summary for Amman Stock Exchange

### VALUE TRADED (JD)

	2025	2026	NET CHANGE	CHANGE (%)
Daily	7,157,053	8,859,139	1,702,086	23.78%
Cumulative (1/7-8/7)	61,488,608	65,959,233	4,470,625	7.27%
Cumulative (4/1-8/7)	915,341,275	1,703,107,893	787,766,618	86.06%

### NO. OF SHARES TRADED

	2025	2026	NET CHANGE	CHANGE (%)
Daily	3,247,841	3,601,785	353,944	10.90%
Cumulative (1/7-8/7)	21,681,174	27,778,784	6,097,610	28.12%
Cumulative (4/1-8/7)	447,940,514	585,152,881	137,212,367	30.63%

### NO. OF TRANSACTIONS

	2025	2026	NET CHANGE	CHANGE (%)
Daily	2,902	3,637	735	25.33%
Cumulative (1/7-8/7)	20,176	23,389	3,213	15.92%
Cumulative (4/1-8/7)	295,446	485,410	189,964	64.30%

### SOME FINANCIAL RATIOS FOR THE ASE (8/7/2026)

SECTOR	P/E	P/BV	DIVIDEND YIELD (%)	TURNOVER (%)
FINANCIAL	9.600	0.986	4.971	0.050
SERVICES	13.091	1.489	4.791	0.075
INDUSTRY	14.971	2.667	5.205	0.049
OVERALL	11.517	1.473	5.190	0.055

### ASE GENERAL FREE FLOAT WEIGHTED INDEX ASEGI (1999=1000)

	TUESDAY 07/07/2026	WEDNESDAY 08/07/2026	% CHANGE	
			DAY BEFORE	YTD
GENERAL INDEX ASEGI	3881.3	3880.8	-0.01%	7.45%
FINANCIAL	3808.9	3807.8	-0.03%	0.85%
SERVICES	2607.5	2619.2	0.45%	20.57%
INDUSTRY	9765.4	9705.8	-0.61%	9.39%

### ASE FREE FLOAT WEIGHTED INDEX ASE20 (2014=1000)

	2120.9	2122.6	0.08%	7.28%
--	--------	--------	-------	-------

### TOTAL RETURN INDEX ASETR (2021=1074)

	2934.3	2936.7	0.08%	12.86%
--	--------	--------	-------	--------

### ASE WEIGHTED INDEX (1991=1000)

	TUESDAY 07/07/2026	WEDNESDAY 08/07/2026	% CHANGE	
			DAY BEFORE	YTD
GENERAL	7584.1	7574.6	-0.12%	7.35%
BANKS	9738.0	9739.6	0.02%	3.13%
INSURANCE	1970.9	1982.4	0.58%	11.17%
SERVICES	1148.6	1153.9	0.46%	6.08%
INDUSTRY	12771.3	12723.6	-0.37%	11.58%

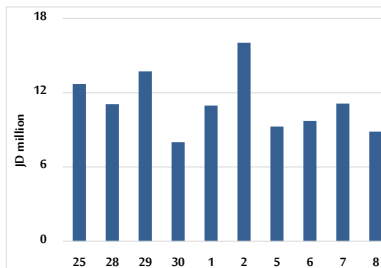
### MARKET INDICES WEIGHTED BY FREE FLOAT MARKET CAP. (2012=1000)

	TUESDAY 07/07/2026	WEDNESDAY 08/07/2026	% CHANGE	
			DAY BEFORE	YTD
FIRST MARKET	2194.4	2194.4	0.00%	7.58%
SECOND MARKET	1050.0	1048.0	-0.19%	2.50%

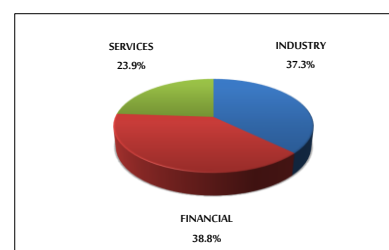
### MARKET CAPITALIZATION (JD)

	28,209,565,309	28,177,513,783	-0.11%	6.36%
--	----------------	----------------	--------	-------

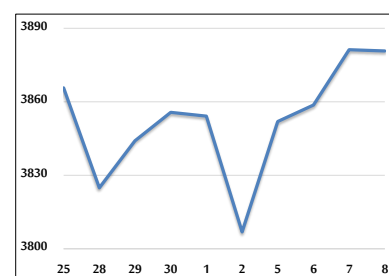
### VALUE TRADED FROM 25/6 TO 8/7/2026



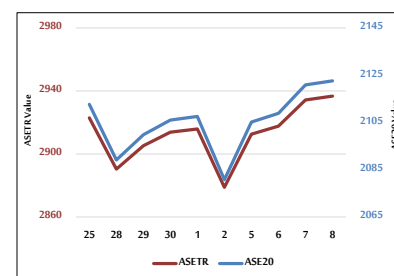
### VALUE TRADED BY SECTOR WEDNESDAY 8/7/2026



### ASE GENERAL FREE FLOAT WEIGHTED INDEX 25/6 TO 8/7/2026



### ASE20 INDEX & ASETR INDEX FROM 25/6 TO 8/7/2026



### ASE WEIGHTED INDEX FROM 25/6 TO 8/7/2026

