

Daily Summary for Amman Stock Exchange

VALUE TRADED (JD)

	2025	2026	NET CHANGE	CHANGE (%)
Daily	6,800,554	11,118,532	4,317,978	63.49%
Cumulative (1/7-7/7)	54,331,555	57,100,094	2,768,539	5.10%
Cumulative (4/1-7/7)	908,184,222	1,694,248,754	786,064,532	86.55%

NO. OF SHARES TRADED

	2025	2026	NET CHANGE	CHANGE (%)
Daily	3,461,002	3,951,806	490,804	14.18%
Cumulative (1/7-7/7)	18,433,333	24,176,999	5,743,666	31.16%
Cumulative (4/1-7/7)	444,692,673	581,551,096	136,858,423	30.78%

NO. OF TRANSACTIONS

	2025	2026	NET CHANGE	CHANGE (%)
Daily	3,042	3,830	788	25.90%
Cumulative (1/7-7/7)	17,274	19,752	2,478	14.35%
Cumulative (4/1-7/7)	292,544	481,773	189,229	64.68%

SOME FINANCIAL RATIOS FOR THE ASE (7/7/2026)

SECTOR	P/E	P/BV	DIVIDEND YIELD (%)	TURNOVER (%)
FINANCIAL	9.598	0.985	4.972	0.051
SERVICES	13.028	1.482	4.814	0.053
INDUSTRY	15.036	2.678	5.183	0.103
OVERALL	11.532	1.474	5.183	0.060

ASE GENERAL FREE FLOAT WEIGHTED INDEX ASEGI (1999=1000)

	MONDAY 06/07/2026	TUESDAY 07/07/2026	% CHANGE	
			DAY BEFORE	YTD
GENERAL INDEX ASEGI	3858.7	3881.3	0.59%	7.47%
FINANCIAL	3799.7	3808.9	0.24%	0.88%
SERVICES	2593.3	2607.5	0.55%	20.03%
INDUSTRY	9606.3	9765.4	1.66%	10.06%

ASE FREE FLOAT WEIGHTED INDEX ASE20 (2014=1000)

	2108.9	2120.9	0.57%	7.19%
--	--------	--------	-------	-------

TOTAL RETURN INDEX ASETR (2021=1074)

	2917.7	2934.3	0.57%	12.77%
--	--------	--------	-------	--------

ASE WEIGHTED INDEX (1991=1000)

	MONDAY 06/07/2026	TUESDAY 07/07/2026	% CHANGE	
			DAY BEFORE	YTD
GENERAL	7500.8	7584.1	1.11%	7.48%
BANKS	9701.4	9738.0	0.38%	3.12%
INSURANCE	1958.1	1970.9	0.65%	10.52%
SERVICES	1142.9	1148.6	0.50%	5.59%
INDUSTRY	12533.2	12771.3	1.90%	12.00%

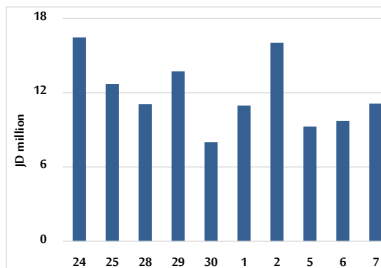
MARKET INDICES WEIGHTED BY FREE FLOAT MARKET CAP. (2012=1000)

	MONDAY 06/07/2026	TUESDAY 07/07/2026	% CHANGE	
			DAY BEFORE	YTD
FIRST MARKET	2181.5	2194.4	0.59%	7.58%
SECOND MARKET	1046.1	1050.0	0.38%	2.70%

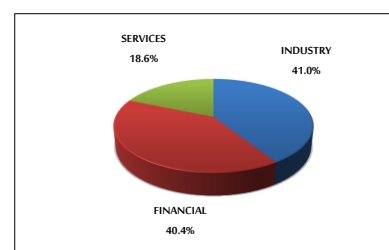
MARKET CAPITALIZATION (JD)

	27,912,502,810	28,209,565,309	1.06%	6.48%
--	----------------	----------------	-------	-------

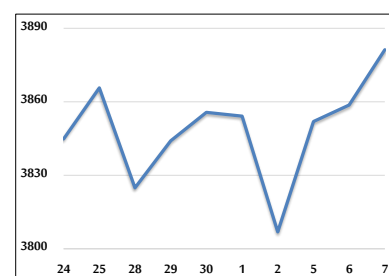
VALUE TRADED FROM 24/6 TO 7/7/2026



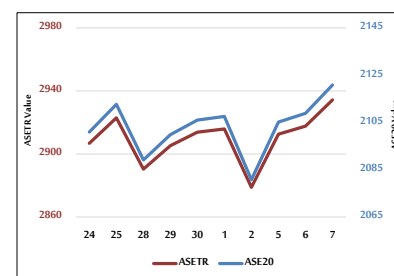
VALUE TRADED BY SECTOR TUESDAY 7/7/2026



ASE GENERAL FREE FLOAT WEIGHTED INDEX 24/6 TO 7/7/2026



ASE20 INDEX & ASETR INDEX FROM 24/6 TO 7/7/2026



ASE WEIGHTED INDEX FROM 24/6 TO 7/7/2026

