

Daily Summary for Amman Stock Exchange

VALUE TRADED (JD)

	2025	2026	NET CHANGE	CHANGE (%)
Daily	12,436,978	9,269,974	-3,167,004	-25.46%
Cumulative (1/7-5/7)	38,025,122	36,263,663	-1,761,459	-4.63%
Cumulative (4/1-5/7)	891,877,789	1,673,412,323	781,534,534	87.63%

NO. OF SHARES TRADED

	2025	2026	NET CHANGE	CHANGE (%)
Daily	3,869,357	4,776,810	907,453	23.45%
Cumulative (1/7-5/7)	11,551,720	15,310,788	3,759,068	32.54%
Cumulative (4/1-5/7)	437,811,060	572,684,885	134,873,825	30.81%

NO. OF TRANSACTIONS

	2025	2026	NET CHANGE	CHANGE (%)
Daily	3,716	3,724	8	0.22%
Cumulative (1/7-5/7)	10,533	12,709	2,176	20.66%
Cumulative (4/1-5/7)	285,803	474,730	188,927	66.10%

SOME FINANCIAL RATIOS FOR THE ASE (5/7/2026)

SECTOR	P/E	P/BV	DIVIDEND YIELD (%)	TURNOVER (%)
FINANCIAL	9.548	0.980	4.998	0.067
SERVICES	12.967	1.475	4.837	0.033
INDUSTRY	14.618	2.604	5.331	0.137
OVERALL	11.353	1.452	5.265	0.073

ASE GENERAL FREE FLOAT WEIGHTED INDEX ASEGI (1999=1000)

	THURSDAY 02/07/2026	SUNDAY 05/07/2026	% CHANGE	
			DAY BEFORE	YTD
GENERAL INDEX ASEGI	3806.9	3852.0	1.18%	6.66%
FINANCIAL	3783.1	3789.4	0.17%	0.37%
SERVICES	2563.9	2604.8	1.59%	19.91%
INDUSTRY	9184.6	9538.7	3.86%	7.50%

ASE FREE FLOAT WEIGHTED INDEX ASE20 (2014=1000)

	2080.8	2105.2	1.17%	6.39%
--	--------	--------	-------	-------

TOTAL RETURN INDEX ASETR (2021=1074)

	2878.8	2912.6	1.17%	11.93%
--	--------	--------	-------	--------

ASE WEIGHTED INDEX (1991=1000)

	THURSDAY 02/07/2026	SUNDAY 05/07/2026	% CHANGE	
			DAY BEFORE	YTD
GENERAL	7298.2	7466.5	2.31%	5.82%
BANKS	9664.2	9683.1	0.20%	2.54%
INSURANCE	1966.6	1975.4	0.45%	10.77%
SERVICES	1135.3	1138.7	0.30%	4.69%
INDUSTRY	11870.9	12438.3	4.78%	9.08%

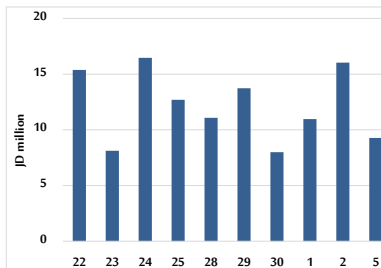
MARKET INDICES WEIGHTED BY FREE FLOAT MARKET CAP. (2012=1000)

	THURSDAY 02/07/2026	SUNDAY 05/07/2026	% CHANGE	
			DAY BEFORE	YTD
FIRST MARKET	2152.1	2177.8	1.20%	6.77%
SECOND MARKET	1039.2	1043.8	0.45%	2.10%

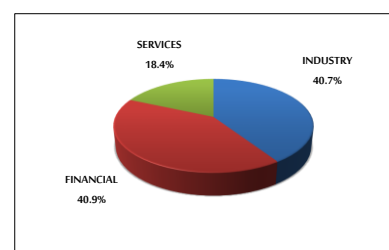
MARKET CAPITALIZATION (JD)

	27,191,301,345	27,791,063,571	2.21%	4.90%
--	----------------	----------------	-------	-------

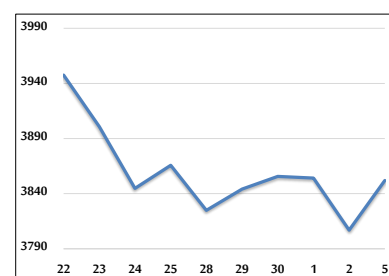
VALUE TRADED FROM 22/6 TO 5/7/2026



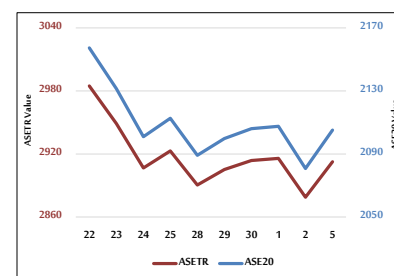
VALUE TRADED BY SECTOR SUNDAY 5/7/2026



ASE GENERAL FREE FLOAT WEIGHTED INDEX 22/6 TO 5/7/2026



ASE20 INDEX & ASETR INDEX FROM 22/6 TO 5/7/2026



ASE WEIGHTED INDEX FROM 22/6 TO 5/7/2026

