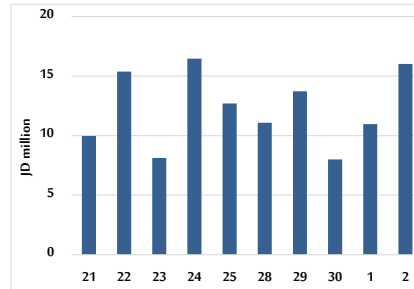


### Daily Summary for Amman Stock Exchange

VALUE TRADED (JD)

	2025	2026	NET CHANGE	CHANGE (%)
Daily	14,586,946	16,028,996	1,442,050	9.89%
Cumulative (1/7-2/7)	25,588,144	26,993,689	1,405,545	5.49%
Cumulative (4/1-2/7)	879,440,811	1,664,142,349	784,701,538	89.23%

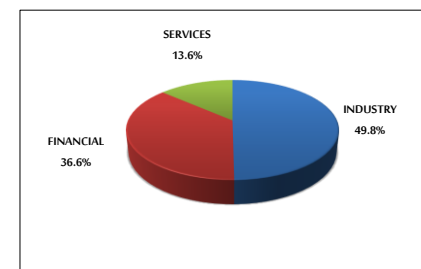
VALUE TRADED FROM 21/6 TO 2/7/2026



NO. OF SHARES TRADED

	2025	2026	NET CHANGE	CHANGE (%)
Daily	4,071,151	6,339,915	2,268,764	55.73%
Cumulative (1/7-2/7)	7,682,363	10,533,978	2,851,615	37.12%
Cumulative (4/1-2/7)	433,941,703	567,908,075	133,966,372	30.87%

VALUE TRADED BY SECTOR THURSDAY 2/7/2026



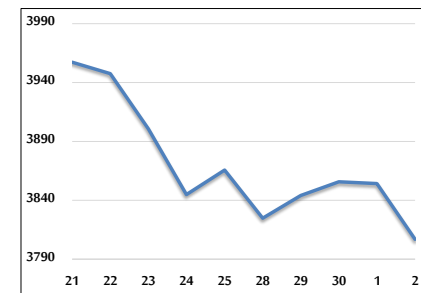
NO. OF TRANSACTIONS

	2025	2026	NET CHANGE	CHANGE (%)
Daily	3,688	4,557	869	23.56%
Cumulative (1/7-2/7)	6,817	8,985	2,168	31.80%
Cumulative (4/1-2/7)	282,087	471,006	188,919	66.97%

SOME FINANCIAL RATIOS FOR THE ASE (2/7/2026)

SECTOR	P/E	P/BV	DIVIDEND YIELD (%)	TURNOVER (%)
FINANCIAL	9.543	0.977	5.000	0.082
SERVICES	12.833	1.460	4.887	0.067
INDUSTRY	13.952	2.485	5.585	0.187
OVERALL	11.097	1.419	5.387	0.096

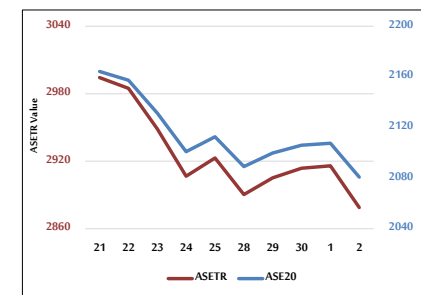
ASE GENERAL FREE FLOAT WEIGHTED INDEX 21/6 TO 2/7/2026



ASE GENERAL FREE FLOAT WEIGHTED INDEX ASEGI (1999=1000)

	WEDNESDAY 01/07/2026	THURSDAY 02/07/2026	% CHANGE	
			DAY BEFORE	YTD
GENERAL INDEX ASEGI	3854.2	3806.9	-1.23%	5.41%
FINANCIAL	3811.6	3783.1	-0.75%	0.20%
SERVICES	2598.8	2563.9	-1.34%	18.02%
INDUSTRY	9410.5	9184.6	-2.40%	3.51%

ASE20 INDEX & ASETR INDEX FROM 21/6 TO 2/7/2026



ASE FREE FLOAT WEIGHTED INDEX ASE20 (2014=1000)

	2107.5	2080.8	-1.27%	5.16%
--	--------	--------	--------	-------

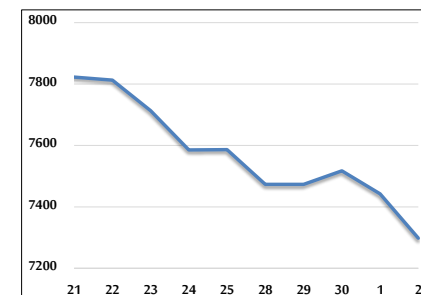
TOTAL RETURN INDEX ASETR (2021=1074)

	2915.9	2878.8	-1.27%	10.63%
--	--------	--------	--------	--------

ASE WEIGHTED INDEX (1991=1000)

	WEDNESDAY 01/07/2026	THURSDAY 02/07/2026	% CHANGE	
			DAY BEFORE	YTD
GENERAL	7442.6	7298.2	-1.94%	3.43%
BANKS	9774.6	9664.2	-1.13%	2.34%
INSURANCE	1971.4	1966.6	-0.24%	10.28%
SERVICES	1138.8	1135.3	-0.31%	4.37%
INDUSTRY	12246.2	11870.9	-3.07%	4.10%

ASE WEIGHTED INDEX FROM 21/6 TO 2/7/2026



MARKET INDICES WEIGHTED BY FREE FLOAT MARKET CAP. (2012=1000)

	WEDNESDAY 01/07/2026	THURSDAY 02/07/2026	% CHANGE	
			DAY BEFORE	YTD
FIRST MARKET	2179.6	2152.1	-1.26%	5.50%
SECOND MARKET	1040.2	1039.2	-0.10%	1.64%

MARKET CAPITALIZATION (JD)

	27,707,237,062	27,191,301,345	-1.86%	2.63%
--	----------------	----------------	--------	-------