

## Daily Summary for Amman Stock Exchange

### VALUE TRADED (JD)

	2025	2026	NET CHANGE	CHANGE (%)
Daily	3,847,609	18,760,688	14,913,079	387.59%
Cumulative (1/6-15/6)	85,359,098	231,151,228	145,792,130	170.80%
Cumulative (4/1-15/6)	772,875,014	1,509,810,289	736,935,275	95.35%

### NO. OF SHARES TRADED

	2025	2026	NET CHANGE	CHANGE (%)
Daily	1,973,880	6,312,713	4,338,833	219.81%
Cumulative (1/6-15/6)	34,187,185	65,287,911	31,100,726	90.97%
Cumulative (4/1-15/6)	393,720,520	510,905,991	117,185,471	29.76%

### NO. OF TRANSACTIONS

	2025	2026	NET CHANGE	CHANGE (%)
Daily	2,120	5,137	3,017	142.31%
Cumulative (1/6-15/6)	28,611	60,716	32,105	112.21%
Cumulative (4/1-15/6)	257,210	419,699	162,489	63.17%

### SOME FINANCIAL RATIOS FOR THE ASE (15/6/2026)

SECTOR	P/E	P/BV	DIVIDEND YIELD (%)	TURNOVER (%)
FINANCIAL	9.991	1.023	4.773	0.080
SERVICES	13.255	1.508	4.732	0.090
INDUSTRY	15.868	2.827	4.911	0.170
OVERALL	12.067	1.528	4.956	0.097

### ASE GENERAL FREE FLOAT WEIGHTED INDEX ASEGI (1999=1000)

	SUNDAY 14/06/2026	MONDAY 15/06/2026	% CHANGE	
			DAY BEFORE	YTD
GENERAL INDEX ASEGI	4015.8	4019.8	0.10%	11.30%
FINANCIAL	3909.1	3932.8	0.61%	4.17%
SERVICES	2703.5	2689.2	-0.53%	23.79%
INDUSTRY	10289.1	10227.6	-0.60%	15.27%

### ASE FREE FLOAT WEIGHTED INDEX ASE20 (2014=1000)

	2196.7	2196.7	0.00%	11.02%
--	--------	--------	-------	--------

### TOTAL RETURN INDEX ASETR (2021=1074)

	3039.2	3039.3	0.00%	16.80%
--	--------	--------	-------	--------

### ASE WEIGHTED INDEX (1991=1000)

	SUNDAY 14/06/2026	MONDAY 15/06/2026	% CHANGE	
			DAY BEFORE	YTD
GENERAL	7944.7	7926.2	-0.23%	12.33%
BANKS	10092.0	10163.7	0.71%	7.63%
INSURANCE	1938.8	1941.1	0.12%	8.85%
SERVICES	1151.5	1146.8	-0.40%	5.43%
INDUSTRY	13642.4	13500.1	-1.04%	18.39%

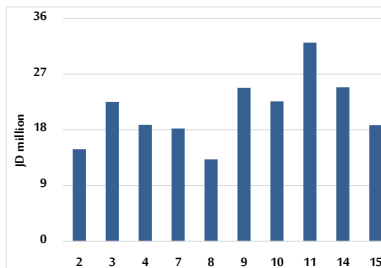
### MARKET INDICES WEIGHTED BY FREE FLOAT MARKET CAP. (2012=1000)

	SUNDAY 14/06/2026	MONDAY 15/06/2026	% CHANGE	
			DAY BEFORE	YTD
FIRST MARKET	2271.1	2273.3	0.10%	11.45%
SECOND MARKET	1037.5	1045.3	0.75%	2.24%

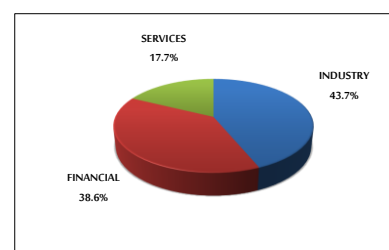
### MARKET CAPITALIZATION (JD)

	29,500,873,746	29,435,061,027	-0.22%	11.10%
--	----------------	----------------	--------	--------

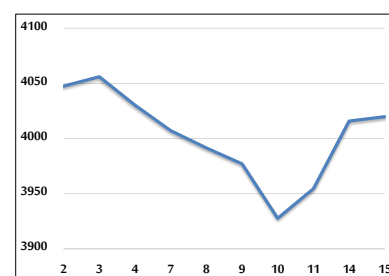
### VALUE TRADED FROM 2/6 TO 15/6/2026



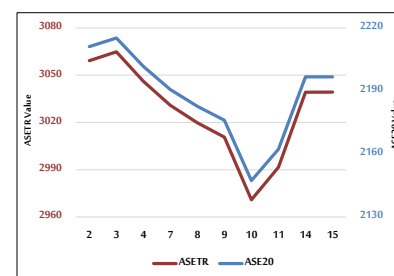
### VALUE TRADED BY SECTOR MONDAY 15/6/2026



### ASE GENERAL FREE FLOAT WEIGHTED INDEX 2/6 TO 15/6/2026



### ASE20 INDEX & ASETR INDEX FROM 2/6 TO 15/6/2026



### ASE WEIGHTED INDEX FROM 2/6 TO 15/6/2026

