

Daily Summary for Amman Stock Exchange

VALUE TRADED (JD)

	2025	2026	NET CHANGE	CHANGE (%)
Daily	6,090,676	32,098,147	26,007,471	427.00%
Cumulative (1/6-11/6)	73,440,576	187,512,181	114,071,605	155.33%
Cumulative (4/1-11/6)	760,956,492	1,466,171,242	705,214,750	92.67%

NO. OF SHARES TRADED

	2025	2026	NET CHANGE	CHANGE (%)
Daily	2,427,391	6,562,206	4,134,815	170.34%
Cumulative (1/6-11/6)	28,264,450	53,365,724	25,101,274	88.81%
Cumulative (4/1-11/6)	387,797,785	498,983,804	111,186,019	28.67%

NO. OF TRANSACTIONS

	2025	2026	NET CHANGE	CHANGE (%)
Daily	2,051	6,399	4,348	211.99%
Cumulative (1/6-11/6)	24,526	50,081	25,555	104.20%
Cumulative (4/1-11/6)	253,125	409,064	155,939	61.61%

SOME FINANCIAL RATIOS FOR THE ASE (11/6/2026)

SECTOR	P/E	P/BV	DIVIDEND YIELD (%)	TURNOVER (%)
FINANCIAL	9.786	1.002	4.874	0.055
SERVICES	13.245	1.506	4.735	0.088
INDUSTRY	15.397	2.743	5.061	0.294
OVERALL	11.788	1.493	5.073	0.100

ASE GENERAL FREE FLOAT WEIGHTED INDEX ASEGI (1999=1000)

	WEDNESDAY 10/06/2026	THURSDAY 11/06/2026	% CHANGE	
			DAY BEFORE	YTD
GENERAL INDEX ASEGI	3927.6	3954.5	0.68%	9.49%
FINANCIAL	3858.9	3858.4	-0.01%	2.19%
SERVICES	2668.8	2683.7	0.56%	23.54%
INDUSTRY	9656.1	9968.1	3.23%	12.34%

ASE FREE FLOAT WEIGHTED INDEX ASE20 (2014=1000)

	2025	2026	% CHANGE	YTD
	2147.3	2162.2	0.69%	9.28%

TOTAL RETURN INDEX ASETR (2021=1074)

	2025	2026	% CHANGE	YTD
	2970.9	2991.5	0.69%	14.96%

ASE WEIGHTED INDEX (1991=1000)

	WEDNESDAY 10/06/2026	THURSDAY 11/06/2026	% CHANGE	
			DAY BEFORE	YTD
GENERAL	7607.7	7742.8	1.78%	9.73%
BANKS	9968.5	9936.5	-0.32%	5.22%
INSURANCE	1923.3	1937.0	0.71%	8.62%
SERVICES	1137.5	1146.4	0.78%	5.39%
INDUSTRY	12619.7	13116.9	3.94%	15.03%

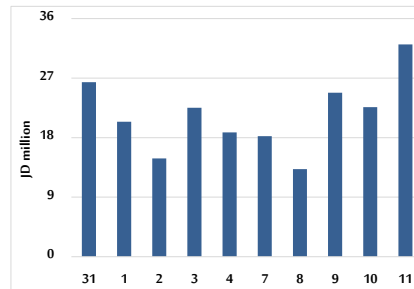
MARKET INDICES WEIGHTED BY FREE FLOAT MARKET CAP. (2012=1000)

	WEDNESDAY 10/06/2026	THURSDAY 11/06/2026	% CHANGE	
			DAY BEFORE	YTD
FIRST MARKET	2219.8	2235.7	0.71%	9.60%
SECOND MARKET	1031.0	1033.8	0.27%	1.12%

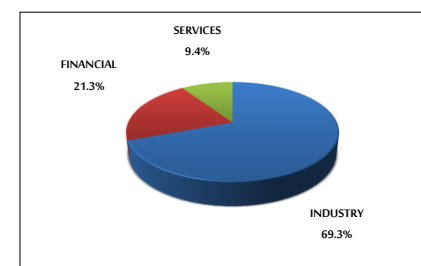
MARKET CAPITALIZATION (JD)

	2025	2026	% CHANGE	YTD
	28,301,314,893	28,782,514,057	1.70%	8.64%

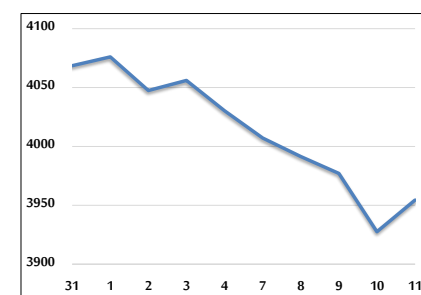
VALUE TRADED FROM 31/5 TO 11/6/2026



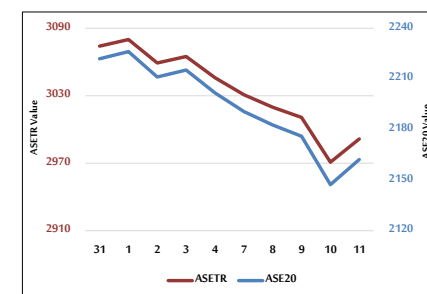
VALUE TRADED BY SECTOR THURSDAY 11/6/2026



ASE GENERAL FREE FLOAT WEIGHTED INDEX 31/5 TO 11/6/2026



ASE20 INDEX & ASETR INDEX FROM 31/5 TO 11/6/2026



ASE WEIGHTED INDEX FROM 31/5 TO 11/6/2026

