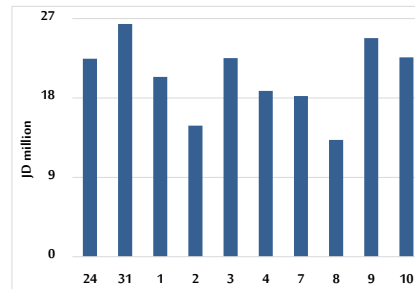


Daily Summary for Amman Stock Exchange

VALUE TRADED (JD)

	2025	2026	NET CHANGE	CHANGE (%)
Daily	6,479,518	22,606,222	16,126,704	248.89%
Cumulative (1/6-10/6)	67,349,900	155,414,034	88,064,134	130.76%
Cumulative (4/1-10/6)	754,865,816	1,434,073,095	679,207,279	89.98%

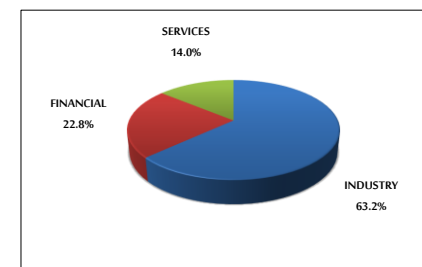
VALUE TRADED FROM 24/5 TO 10/6/2026



NO. OF SHARES TRADED

	2025	2026	NET CHANGE	CHANGE (%)
Daily	2,728,330	6,228,801	3,500,471	128.30%
Cumulative (1/6-10/6)	25,837,059	46,803,518	20,966,459	81.15%
Cumulative (4/1-10/6)	385,370,394	492,421,598	107,051,204	27.78%

VALUE TRADED BY SECTOR WEDNESDAY 10/6/2026



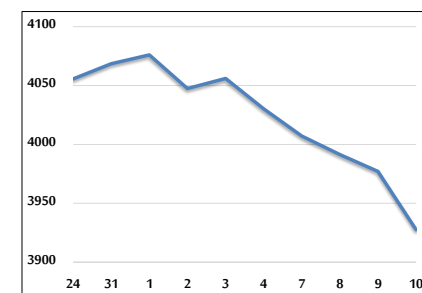
NO. OF TRANSACTIONS

	2025	2026	NET CHANGE	CHANGE (%)
Daily	2,320	6,561	4,241	182.80%
Cumulative (1/6-10/6)	22,475	43,682	21,207	94.36%
Cumulative (4/1-10/6)	251,074	402,665	151,591	60.38%

SOME FINANCIAL RATIOS FOR THE ASE (10/6/2026)

SECTOR	P/E	P/BV	DIVIDEND YIELD (%)	TURNOVER (%)
FINANCIAL	9.811	1.005	4.861	0.058
SERVICES	13.167	1.498	4.763	0.058
INDUSTRY	14.785	2.634	5.271	0.284
OVERALL	11.582	1.467	5.163	0.095

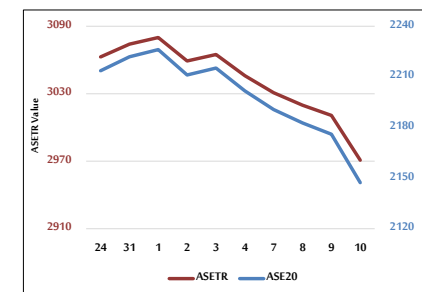
ASE GENERAL FREE FLOAT WEIGHTED INDEX 24/5 TO 10/6/2026



ASE GENERAL FREE FLOAT WEIGHTED INDEX ASEGI (1999=1000)

	TUESDAY 09/06/2026	WEDNESDAY 10/06/2026	% CHANGE	
			DAY BEFORE	YTD
GENERAL INDEX ASEGI	3977.1	3927.6	-1.24%	8.75%
FINANCIAL	3873.9	3858.9	-0.39%	2.21%
SERVICES	2698.7	2668.8	-1.11%	22.85%
INDUSTRY	10082.1	9656.1	-4.23%	8.83%

ASE20 INDEX & ASETR INDEX FROM 24/5 TO 10/6/2026



ASE FREE FLOAT WEIGHTED INDEX ASE20 (2014=1000)

	2176.0	2147.3	-1.32%	8.53%
--	--------	--------	--------	-------

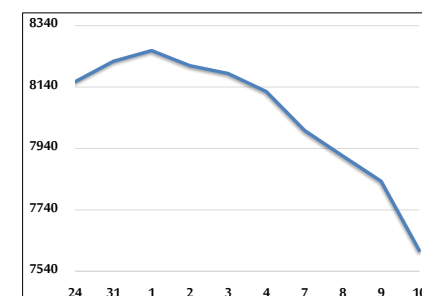
TOTAL RETURN INDEX ASETR (2021=1074)

	3010.7	2970.9	-1.32%	14.17%
--	--------	--------	--------	--------

ASE WEIGHTED INDEX (1991=1000)

	TUESDAY 09/06/2026	WEDNESDAY 10/06/2026	% CHANGE	
			DAY BEFORE	YTD
GENERAL	7833.5	7607.7	-2.88%	7.82%
BANKS	10056.6	9968.5	-0.88%	5.56%
INSURANCE	1930.7	1923.3	-0.38%	7.85%
SERVICES	1152.6	1137.5	-1.31%	4.57%
INDUSTRY	13286.2	12619.7	-5.02%	10.67%

ASE WEIGHTED INDEX FROM 24/5 TO 10/6/2026



MARKET INDICES WEIGHTED BY FREE FLOAT MARKET CAP. (2012=1000)

	TUESDAY 09/06/2026	WEDNESDAY 10/06/2026	% CHANGE	
			DAY BEFORE	YTD
FIRST MARKET	2248.4	2219.8	-1.27%	8.83%
SECOND MARKET	1034.1	1031.0	-0.29%	0.84%

MARKET CAPITALIZATION (JD)

	29,108,411,018	28,301,314,893	-2.77%	6.82%
--	----------------	----------------	--------	-------