

Daily Summary for Amman Stock Exchange

VALUE TRADED (JD)

	2025	2026	NET CHANGE	CHANGE (%)
Daily	8,562,596	20,170,283	11,607,687	135.56%
Cumulative (3/5-13/5)	90,359,371	120,633,294	30,273,923	33.50%
Cumulative (4/1-13/5)	595,029,449	1,115,779,642	520,750,193	87.52%

NO. OF SHARES TRADED

	2025	2026	NET CHANGE	CHANGE (%)
Daily	4,859,227	9,419,460	4,560,233	93.85%
Cumulative (3/5-13/5)	46,649,261	57,631,616	10,982,355	23.54%
Cumulative (4/1-13/5)	312,282,399	394,435,904	82,153,505	26.31%

NO. OF TRANSACTIONS

	2025	2026	NET CHANGE	CHANGE (%)
Daily	3,724	5,630	1,906	51.18%
Cumulative (3/5-13/5)	27,715	39,605	11,890	42.90%
Cumulative (4/1-13/5)	196,432	317,067	120,635	61.41%

SOME FINANCIAL RATIOS FOR THE ASE (13/5/2026)

SECTOR	P/E	P/BV	DIVIDEND YIELD (%)	TURNOVER (%)
FINANCIAL	9.363	0.959	5.094	0.125
SERVICES	13.298	1.512	4.717	0.139
INDUSTRY	15.855	2.824	4.915	0.265
OVERALL	11.725	1.485	5.100	0.147

ASE GENERAL FREE FLOAT WEIGHTED INDEX ASEGI (1999=1000)

	TUESDAY 12/05/2026	WEDNESDAY 13/05/2026	% CHANGE	
			DAY BEFORE	YTD
GENERAL INDEX ASEGI	3896.3	3898.1	0.05%	7.93%
FINANCIAL	3762.7	3756.3	-0.17%	-0.51%
SERVICES	2628.4	2649.0	0.78%	21.94%
INDUSTRY	10242.9	10217.2	-0.25%	15.15%

ASE FREE FLOAT WEIGHTED INDEX ASE20 (2014=1000)

	2129.1	2127.9	-0.05%	7.54%
--	--------	--------	--------	-------

TOTAL RETURN INDEX ASETR (2021=1074)

	2945.7	2944.1	-0.05%	13.14%
--	--------	--------	--------	--------

ASE WEIGHTED INDEX (1991=1000)

	TUESDAY 12/05/2026	WEDNESDAY 13/05/2026	% CHANGE	
			DAY BEFORE	YTD
GENERAL	7709.4	7705.1	-0.06%	9.20%
BANKS	9488.3	9483.2	-0.05%	0.42%
INSURANCE	1900.6	1914.1	0.71%	7.34%
SERVICES	1154.1	1161.4	0.63%	6.77%
INDUSTRY	13510.7	13482.3	-0.21%	18.23%

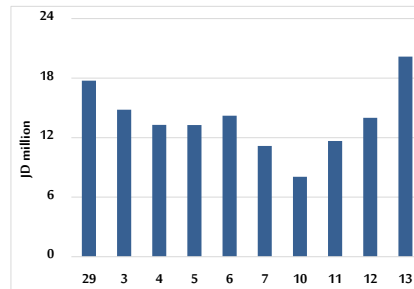
MARKET INDICES WEIGHTED BY FREE FLOAT MARKET CAP. (2012=1000)

	TUESDAY 12/05/2026	WEDNESDAY 13/05/2026	% CHANGE	
			DAY BEFORE	YTD
FIRST MARKET	2201.9	2202.1	0.01%	7.95%
SECOND MARKET	1032.4	1040.0	0.74%	1.73%

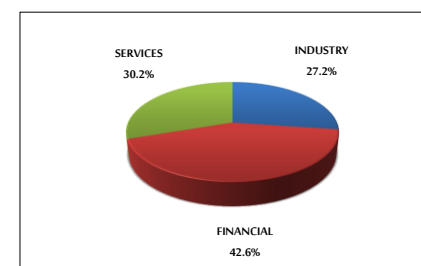
MARKET CAPITALIZATION (JD)

	28,852,655,397	28,839,617,322	-0.05%	8.86%
--	----------------	----------------	--------	-------

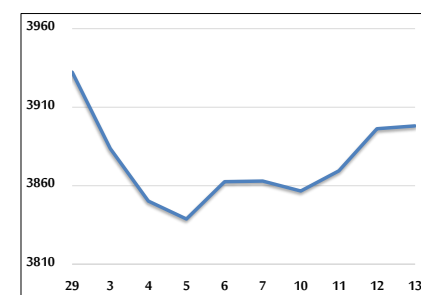
VALUE TRADED FROM 29/4 TO 13/5/2026



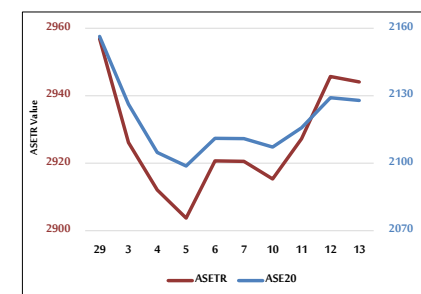
VALUE TRADED BY SECTOR WEDNESDAY 13/5/2026



ASE GENERAL FREE FLOAT WEIGHTED INDEX 29/4 TO 13/5/2026



ASE20 INDEX & ASETR INDEX FROM 29/4 TO 13/5/2026



ASE WEIGHTED INDEX FROM 29/4 TO 13/5/2026

