

## Daily Summary for Amman Stock Exchange

### VALUE TRADED (JD)

	2025	2026	NET CHANGE	CHANGE (%)
Daily	6,451,829	14,003,897	7,552,068	117.05%
Cumulative (3/5-12/5)	81,796,775	100,463,011	18,666,236	22.82%
Cumulative (4/1-12/5)	586,466,853	1,095,609,359	509,142,506	86.82%

### NO. OF SHARES TRADED

	2025	2026	NET CHANGE	CHANGE (%)
Daily	3,373,190	6,475,043	3,101,853	91.96%
Cumulative (3/5-12/5)	41,790,034	48,212,156	6,422,122	15.37%
Cumulative (4/1-12/5)	307,423,172	385,016,444	77,593,272	25.24%

### NO. OF TRANSACTIONS

	2025	2026	NET CHANGE	CHANGE (%)
Daily	2,746	4,966	2,220	80.84%
Cumulative (3/5-12/5)	23,991	33,975	9,984	41.62%
Cumulative (4/1-12/5)	192,708	311,437	118,729	61.61%

### SOME FINANCIAL RATIOS FOR THE ASE (12/5/2026)

SECTOR	P/E	P/BV	DIVIDEND YIELD (%)	TURNOVER (%)
FINANCIAL	9.363	0.959	5.094	0.080
SERVICES	13.179	1.499	4.759	0.064
INDUSTRY	15.911	2.834	4.898	0.254
OVERALL	11.732	1.486	5.097	0.101

### ASE GENERAL FREE FLOAT WEIGHTED INDEX ASEGI (1999=1000)

	MONDAY 11/05/2026	TUESDAY 12/05/2026	% CHANGE	
			DAY BEFORE	YTD
GENERAL INDEX ASEGI	3869.5	3896.3	0.69%	7.88%
FINANCIAL	3767.6	3762.7	-0.13%	-0.34%
SERVICES	2569.3	2628.4	2.30%	21.00%
INDUSTRY	10155.4	10242.9	0.86%	15.44%

### ASE FREE FLOAT WEIGHTED INDEX ASE20 (2014=1000)

	2025	2026	% CHANGE	YTD
	2115.8	2129.1	0.63%	7.60%

### TOTAL RETURN INDEX ASETR (2021=1074)

	2025	2026	% CHANGE	YTD
	2927.3	2945.7	0.63%	13.20%

### ASE WEIGHTED INDEX (1991=1000)

	MONDAY 11/05/2026	TUESDAY 12/05/2026	% CHANGE	
			DAY BEFORE	YTD
GENERAL	7681.1	7709.4	0.37%	9.26%
BANKS	9525.6	9488.3	-0.39%	0.47%
INSURANCE	1898.9	1900.6	0.09%	6.58%
SERVICES	1143.9	1154.1	0.90%	6.10%
INDUSTRY	13388.5	13510.7	0.91%	18.48%

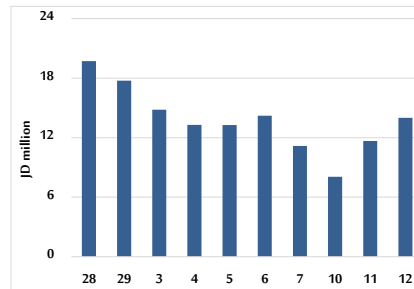
### MARKET INDICES WEIGHTED BY FREE FLOAT MARKET CAP. (2012=1000)

	MONDAY 11/05/2026	TUESDAY 12/05/2026	% CHANGE	
			DAY BEFORE	YTD
FIRST MARKET	2187.1	2201.9	0.68%	7.95%
SECOND MARKET	1028.4	1032.4	0.39%	0.98%

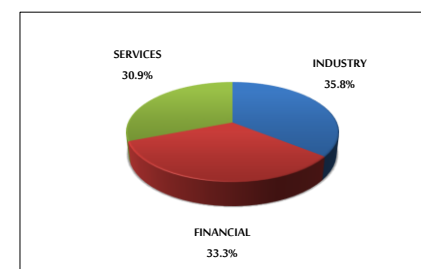
### MARKET CAPITALIZATION (JD)

	2025	2026	% CHANGE	YTD
	28,749,597,446	28,852,655,397	0.36%	8.91%

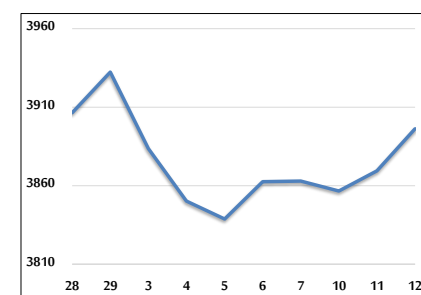
### VALUE TRADED FROM 28/4 TO 12/5/2026



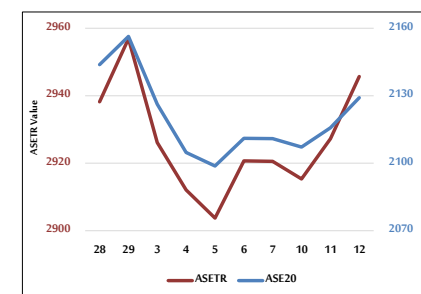
### VALUE TRADED BY SECTOR TUESDAY 12/5/2026



### ASE GENERAL FREE FLOAT WEIGHTED INDEX 28/4 TO 12/5/2026



### ASE20 INDEX & ASETR INDEX FROM 28/4 TO 12/5/2026



### ASE WEIGHTED INDEX FROM 28/4 TO 12/5/2026

