

Daily Summary for Amman Stock Exchange

VALUE TRADED (JD)

	2025	2026	NET CHANGE	CHANGE (%)
Daily	10,381,918	11,656,186	1,274,268	12.27%
Cumulative (3/5-11/5)	75,344,946	86,459,114	11,114,168	14.75%
Cumulative (4/1-11/5)	580,015,024	1,081,605,462	501,590,438	86.48%

NO. OF SHARES TRADED

	2025	2026	NET CHANGE	CHANGE (%)
Daily	4,917,461	6,337,650	1,420,189	28.88%
Cumulative (3/5-11/5)	38,416,844	41,737,113	3,320,269	8.64%
Cumulative (4/1-11/5)	304,049,982	378,541,401	74,491,419	24.50%

NO. OF TRANSACTIONS

	2025	2026	NET CHANGE	CHANGE (%)
Daily	3,090	3,942	852	27.57%
Cumulative (3/5-11/5)	21,245	29,009	7,764	36.55%
Cumulative (4/1-11/5)	189,962	306,471	116,509	61.33%

SOME FINANCIAL RATIOS FOR THE ASE (11/5/2026)

SECTOR	P/E	P/BV	DIVIDEND YIELD (%)	TURNOVER (%)
FINANCIAL	9.393	0.962	5.077	0.062
SERVICES	12.961	1.474	4.839	0.127
INDUSTRY	15.805	2.815	4.931	0.241
OVERALL	11.689	1.480	5.116	0.099

ASE GENERAL FREE FLOAT WEIGHTED INDEX ASEGI (1999=1000)

	SUNDAY 10/05/2026	MONDAY 11/05/2026	% CHANGE	
			DAY BEFORE	YTD
GENERAL INDEX ASEGI	3856.7	3869.5	0.33%	7.14%
FINANCIAL	3774.1	3767.6	-0.17%	-0.21%
SERVICES	2537.6	2569.3	1.25%	18.28%
INDUSTRY	10098.6	10155.4	0.56%	14.45%

ASE FREE FLOAT WEIGHTED INDEX ASE20 (2014=1000)

	2107.2	2115.8	0.41%	6.93%
--	--------	--------	-------	-------

TOTAL RETURN INDEX ASETR (2021=1074)

	2915.4	2927.3	0.41%	12.49%
--	--------	--------	-------	--------

ASE WEIGHTED INDEX (1991=1000)

	SUNDAY 10/05/2026	MONDAY 11/05/2026	% CHANGE	
			DAY BEFORE	YTD
GENERAL	7650.9	7681.1	0.39%	8.86%
BANKS	9537.8	9525.6	-0.13%	0.87%
INSURANCE	1906.6	1898.9	-0.41%	6.48%
SERVICES	1140.3	1143.9	0.31%	5.16%
INDUSTRY	13273.7	13388.5	0.86%	17.41%

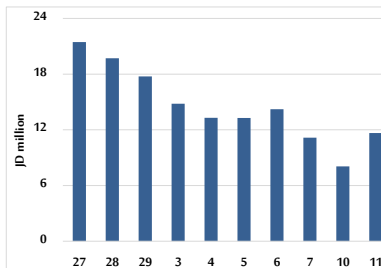
MARKET INDICES WEIGHTED BY FREE FLOAT MARKET CAP. (2012=1000)

	SUNDAY 10/05/2026	MONDAY 11/05/2026	% CHANGE	
			DAY BEFORE	YTD
FIRST MARKET	2179.9	2187.1	0.33%	7.22%
SECOND MARKET	1028.5	1028.4	-0.01%	0.58%

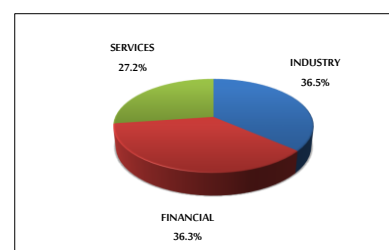
MARKET CAPITALIZATION (JD)

	28,642,471,830	28,749,597,446	0.37%	8.52%
--	----------------	----------------	-------	-------

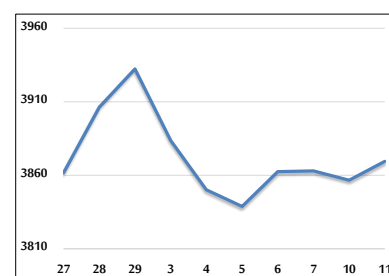
VALUE TRADED FROM 27/4 TO 11/5/2026



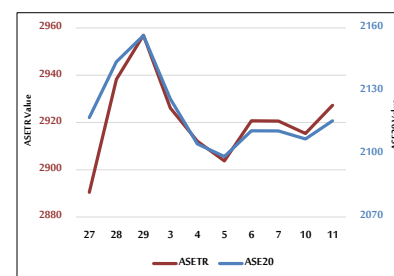
VALUE TRADED BY SECTOR MONDAY 11/5/2026



ASE GENERAL FREE FLOAT WEIGHTED INDEX 27/4 TO 11/5/2026



ASE20 INDEX & ASETR INDEX FROM 27/4 TO 11/5/2026



ASE WEIGHTED INDEX FROM 27/4 TO 11/5/2026

