

Daily Summary for Amman Stock Exchange

VALUE TRADED (JD)

	2025	2026	NET CHANGE	CHANGE (%)
Daily	9,552,352	13,271,991	3,719,639	38.94%
Cumulative (3/5-5/5)	32,115,833	41,372,814	9,256,981	28.82%
Cumulative (4/1-5/5)	536,785,911	1,036,519,162	499,733,251	93.10%

NO. OF SHARES TRADED

	2025	2026	NET CHANGE	CHANGE (%)
Daily	4,276,875	6,849,787	2,572,912	60.16%
Cumulative (3/5-5/5)	13,909,482	19,455,333	5,545,851	39.87%
Cumulative (4/1-5/5)	279,542,620	356,259,621	76,717,001	27.44%

NO. OF TRANSACTIONS

	2025	2026	NET CHANGE	CHANGE (%)
Daily	3,009	4,682	1,673	55.60%
Cumulative (3/5-5/5)	9,798	13,825	4,027	41.10%
Cumulative (4/1-5/5)	178,515	291,287	112,772	63.17%

SOME FINANCIAL RATIOS FOR THE ASE (5/5/2026)

SECTOR	P/E	P/BV	DIVIDEND YIELD (%)	TURNOVER (%)
FINANCIAL	9.378	0.960	5.088	0.090
SERVICES	12.788	1.454	4.905	0.103
INDUSTRY	15.593	2.778	4.998	0.191
OVERALL	11.586	1.467	5.162	0.107

ASE GENERAL FREE FLOAT WEIGHTED INDEX ASEGI (1999=1000)

	MONDAY 04/05/2026	TUESDAY 05/05/2026	% CHANGE	
			DAY BEFORE	YTD
GENERAL INDEX ASEGI	3850.2	3838.8	-0.30%	6.29%
FINANCIAL	3752.0	3757.0	0.13%	-0.49%
SERVICES	2560.5	2526.9	-1.31%	16.32%
INDUSTRY	10034.3	10035.5	0.01%	13.10%

ASE FREE FLOAT WEIGHTED INDEX ASE20 (2014=1000)

	2104.8	2098.8	-0.29%	6.07%
--	--------	--------	--------	-------

TOTAL RETURN INDEX ASETR (2021=1074)

	2912.1	2903.8	-0.29%	11.59%
--	--------	--------	--------	--------

ASE WEIGHTED INDEX (1991=1000)

	MONDAY 04/05/2026	TUESDAY 05/05/2026	% CHANGE	
			DAY BEFORE	YTD
GENERAL	7625.9	7613.5	-0.16%	7.90%
BANKS	9529.2	9506.6	-0.24%	0.67%
INSURANCE	1909.5	1915.5	0.31%	7.42%
SERVICES	1138.4	1126.3	-1.06%	3.55%
INDUSTRY	13197.3	13207.3	0.08%	15.82%

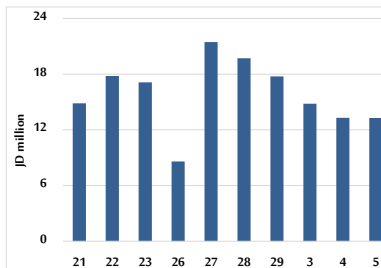
MARKET INDICES WEIGHTED BY FREE FLOAT MARKET CAP. (2012=1000)

	MONDAY 04/05/2026	TUESDAY 05/05/2026	% CHANGE	
			DAY BEFORE	YTD
FIRST MARKET	2178.4	2171.7	-0.31%	6.47%
SECOND MARKET	1000.4	1005.4	0.50%	-1.66%

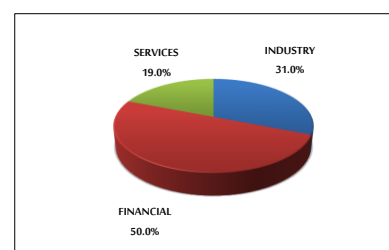
MARKET CAPITALIZATION (JD)

	28,547,932,769	28,506,487,710	-0.15%	7.60%
--	----------------	----------------	--------	-------

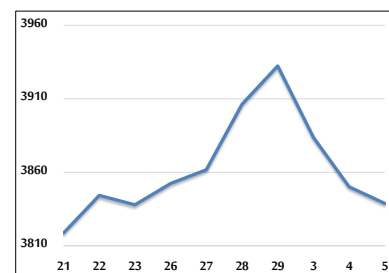
VALUE TRADED FROM 21/4 TO 5/5/2026



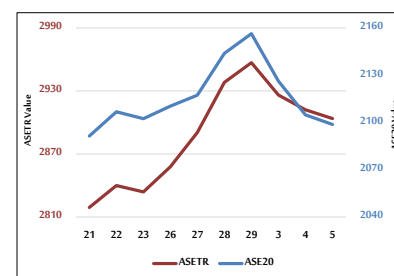
VALUE TRADED BY SECTOR TUESDAY 5/5/2026



ASE GENERAL FREE FLOAT WEIGHTED INDEX 21/4 TO 5/5/2026



ASE20 INDEX & ASETR INDEX FROM 21/4 TO 5/5/2026



ASE WEIGHTED INDEX FROM 21/4 TO 5/5/2026

