

## Daily Summary for Amman Stock Exchange

### VALUE TRADED (JD)

	2025	2026	NET CHANGE	CHANGE (%)
Daily	11,735,702	14,811,743	3,076,041	26.21%
Cumulative (3/5-3/5)	11,735,702	14,811,743	3,076,041	26.21%
Cumulative (4/1-3/5)	516,405,780	1,009,958,091	493,552,311	95.57%

### NO. OF SHARES TRADED

	2025	2026	NET CHANGE	CHANGE (%)
Daily	4,958,604	6,324,852	1,366,248	27.55%
Cumulative (3/5-3/5)	4,958,604	6,324,852	1,366,248	27.55%
Cumulative (4/1-3/5)	270,591,742	343,129,140	72,537,398	26.81%

### NO. OF TRANSACTIONS

	2025	2026	NET CHANGE	CHANGE (%)
Daily	3,579	4,678	1,099	30.71%
Cumulative (3/5-3/5)	3,579	4,678	1,099	30.71%
Cumulative (4/1-3/5)	172,296	282,140	109,844	63.75%

### SOME FINANCIAL RATIOS FOR THE ASE (3/5/2026)

SECTOR	P/E	P/BV	DIVIDEND YIELD (%)	TURNOVER (%)
FINANCIAL	9.446	0.963	5.062	0.053
SERVICES	13.252	1.507	4.733	0.055
INDUSTRY	15.850	2.806	4.930	0.373
OVERALL	11.732	1.487	5.095	0.098

### ASE GENERAL FREE FLOAT WEIGHTED INDEX ASEGI (1999=1000)

	WEDNESDAY 29/04/2026	SUNDAY 03/05/2026	% CHANGE	
			DAY BEFORE	YTD
GENERAL INDEX ASEGI	3932.4	3883.7	-1.24%	7.53%
FINANCIAL	3792.3	3770.2	-0.58%	-0.14%
SERVICES	2641.0	2592.0	-1.85%	19.32%
INDUSTRY	10389.6	10162.2	-2.19%	14.53%

### ASE FREE FLOAT WEIGHTED INDEX ASE20 (2014=1000)

	2025	2026	% CHANGE	YTD
	2156.4	2126.2	-1.40%	7.46%

### TOTAL RETURN INDEX ASETR (2021=1074)

	2025	2026	% CHANGE	YTD
	2956.9	2926.1	-1.04%	12.45%

### ASE WEIGHTED INDEX (1991=1000)

	WEDNESDAY 29/04/2026	SUNDAY 03/05/2026	% CHANGE	
			DAY BEFORE	YTD
GENERAL	7837.7	7713.8	-1.58%	9.32%
BANKS	9561.9	9560.5	-0.01%	1.24%
INSURANCE	1906.5	1910.5	0.21%	7.14%
SERVICES	1219.1	1171.5	-3.90%	7.70%
INDUSTRY	13733.1	13398.5	-2.44%	17.50%

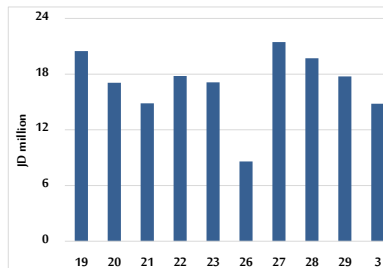
### MARKET INDICES WEIGHTED BY FREE FLOAT MARKET CAP. (2012=1000)

	WEDNESDAY 29/04/2026	SUNDAY 03/05/2026	% CHANGE	
			DAY BEFORE	YTD
FIRST MARKET	2229.5	2200.0	-1.32%	7.85%
SECOND MARKET	1008.6	997.7	-1.08%	-2.41%

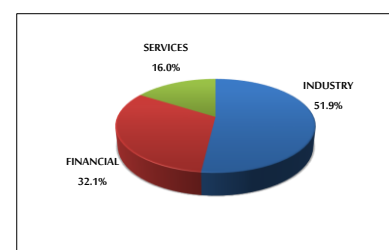
### MARKET CAPITALIZATION (JD)

	2025	2026	% CHANGE	YTD
	29,308,843,923	28,864,783,548	-1.52%	8.95%

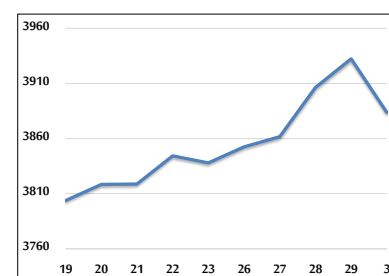
### VALUE TRADED FROM 19/4 TO 3/5/2026



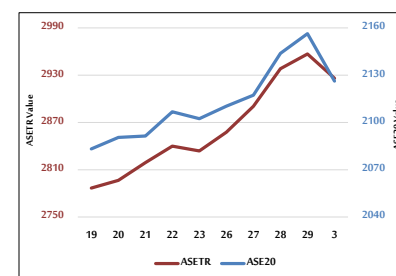
### VALUE TRADED BY SECTOR SUNDAY 3/5/2026



### ASE GENERAL FREE FLOAT WEIGHTED INDEX 19/4 TO 3/5/2026



### ASE20 INDEX & ASETR INDEX FROM 19/4 TO 3/5/2026



### ASE WEIGHTED INDEX FROM 19/4 TO 3/5/2026

