

Daily Summary for Amman Stock Exchange

VALUE TRADED (JD)

	2025	2026	NET CHANGE	CHANGE (%)
Daily	5,370,644	10,194,572	4,823,928	89.82%
Cumulative (1/4-13/4)	66,230,694	126,335,395	60,104,701	90.75%
Cumulative (4/1-13/4)	431,475,992	776,111,207	344,635,215	79.87%

NO. OF SHARES TRADED

	2025	2026	NET CHANGE	CHANGE (%)
Daily	2,740,677	3,391,346	650,669	23.74%
Cumulative (1/4-13/4)	31,639,830	32,012,726	372,896	1.18%
Cumulative (4/1-13/4)	227,549,729	267,013,019	39,463,290	17.34%

NO. OF TRANSACTIONS

	2025	2026	NET CHANGE	CHANGE (%)
Daily	1,919	3,142	1,223	63.73%
Cumulative (1/4-13/4)	19,790	30,015	10,225	51.67%
Cumulative (4/1-13/4)	144,941	221,726	76,785	52.98%

SOME FINANCIAL RATIOS FOR THE ASE (13/4/2026)

SECTOR	P/E	P/BV	DIVIDEND YIELD (%)	TURNOVER (%)
FINANCIAL	9.197	0.932	4.856	0.029
SERVICES	14.193	1.406	4.446	0.073
INDUSTRY	15.920	2.773	4.185	0.137
OVERALL	11.688	1.444	4.619	0.052

ASE GENERAL FREE FLOAT WEIGHTED INDEX ASEGI (1999=1000)

	SUNDAY 12/04/2026	MONDAY 13/04/2026	% CHANGE	
			DAY BEFORE	YTD
GENERAL INDEX ASEGI	3698.6	3698.5	0.00%	2.41%
FINANCIAL	3648.5	3643.4	-0.14%	-3.50%
SERVICES	2356.8	2362.9	0.26%	8.77%
INDUSTRY	9947.2	9949.9	0.03%	12.14%

ASE FREE FLOAT WEIGHTED INDEX ASE20 (2014=1000)

	2026.1	2025.3	-0.04%	2.36%
--	--------	--------	--------	-------

TOTAL RETURN INDEX ASETR (2021=1074)

	2705.8	2704.7	-0.04%	3.94%
--	--------	--------	--------	-------

ASE WEIGHTED INDEX (1991=1000)

	SUNDAY 12/04/2026	MONDAY 13/04/2026	% CHANGE	
			DAY BEFORE	YTD
GENERAL	7505.4	7492.0	-0.18%	6.18%
BANKS	9275.1	9242.4	-0.35%	-2.13%
INSURANCE	1805.7	1817.2	0.64%	1.91%
SERVICES	1123.1	1121.4	-0.15%	3.09%
INDUSTRY	13123.0	13115.2	-0.06%	15.01%

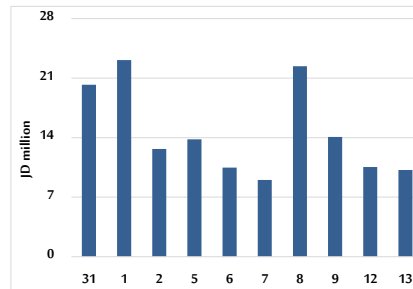
MARKET INDICES WEIGHTED BY FREE FLOAT MARKET CAP. (2012=1000)

	SUNDAY 12/04/2026	MONDAY 13/04/2026	% CHANGE	
			DAY BEFORE	YTD
FIRST MARKET	2097.0	2095.8	-0.05%	2.75%
SECOND MARKET	957.8	962.4	0.48%	-5.87%

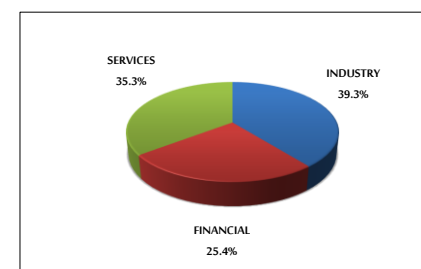
MARKET CAPITALIZATION (JD)

	28,119,923,717	28,072,050,044	-0.17%	5.96%
--	----------------	----------------	--------	-------

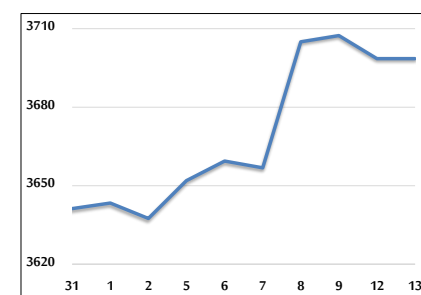
VALUE TRADED FROM 31/3 TO 13/4/2026



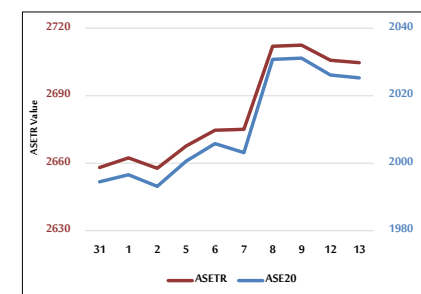
VALUE TRADED BY SECTOR MONDAY 13/4/2026



ASE GENERAL FREE FLOAT WEIGHTED INDEX 31/3 TO 13/4/2026



ASE20 INDEX & ASETR INDEX FROM 31/3 TO 13/4/2026



ASE WEIGHTED INDEX FROM 31/3 TO 13/4/2026

