

Daily Summary for Amman Stock Exchange

VALUE TRADED (JD)

	2025	2026	NET CHANGE	CHANGE (%)
Daily	8,103,053	14,091,946	5,988,893	73.91%
Cumulative (1/4-9/4)	55,406,209	105,596,708	50,190,499	90.59%
Cumulative (4/1-9/4)	420,651,507	755,372,520	334,721,013	79.57%

NO. OF SHARES TRADED

	2025	2026	NET CHANGE	CHANGE (%)
Daily	4,923,219	3,208,379	-1,714,840	-34.83%
Cumulative (1/4-9/4)	25,658,917	25,942,443	283,526	1.10%
Cumulative (4/1-9/4)	221,568,816	260,942,736	39,373,920	17.77%

NO. OF TRANSACTIONS

	2025	2026	NET CHANGE	CHANGE (%)
Daily	2,180	3,374	1,194	54.77%
Cumulative (1/4-9/4)	16,214	24,044	7,830	48.29%
Cumulative (4/1-9/4)	141,365	215,755	74,390	52.62%

SOME FINANCIAL RATIOS FOR THE ASE (9/4/2026)

SECTOR	P/E	P/BV	DIVIDEND YIELD (%)	TURNOVER (%)
FINANCIAL	9.254	0.937	4.826	0.033
SERVICES	14.269	1.414	4.389	0.100
INDUSTRY	15.910	2.771	4.195	0.066
OVERALL	11.722	1.448	4.602	0.050

ASE GENERAL FREE FLOAT WEIGHTED INDEX ASEGI (1999=1000)

	WEDNESDAY 08/04/2026	THURSDAY 09/04/2026	% CHANGE	
			DAY BEFORE	YTD
GENERAL INDEX ASEGI	3705.0	3707.4	0.06%	2.65%
FINANCIAL	3650.6	3658.5	0.22%	-3.10%
SERVICES	2372.7	2364.9	-0.33%	8.87%
INDUSTRY	9926.4	9940.7	0.14%	12.03%

ASE FREE FLOAT WEIGHTED INDEX ASE20 (2014=1000)

	2030.8	2031.1	0.02%	2.65%
--	--------	--------	-------	-------

TOTAL RETURN INDEX ASETR (2021=1074)

	2712.0	2712.5	0.02%	4.24%
--	--------	--------	-------	-------

ASE WEIGHTED INDEX (1991=1000)

	WEDNESDAY 08/04/2026	THURSDAY 09/04/2026	% CHANGE	
			DAY BEFORE	YTD
GENERAL	7498.0	7513.8	0.21%	6.49%
BANKS	9251.8	9306.4	0.59%	-1.45%
INSURANCE	1814.4	1806.0	-0.47%	1.27%
SERVICES	1129.9	1131.3	0.12%	4.00%
INDUSTRY	13107.5	13097.3	-0.08%	14.86%

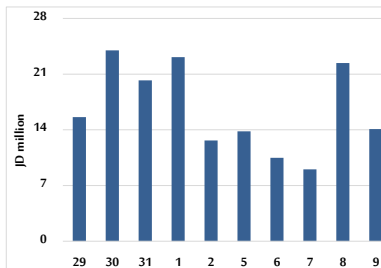
MARKET INDICES WEIGHTED BY FREE FLOAT MARKET CAP. (2012=1000)

	WEDNESDAY 08/04/2026	THURSDAY 09/04/2026	% CHANGE	
			DAY BEFORE	YTD
FIRST MARKET	2101.1	2102.2	0.05%	3.06%
SECOND MARKET	962.4	962.1	-0.04%	-5.90%

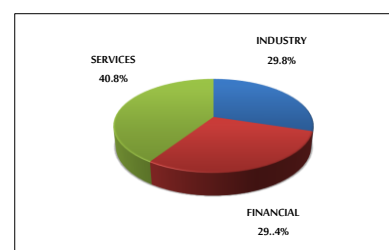
MARKET CAPITALIZATION (JD)

	28,032,278,808	28,088,509,292	0.20%	6.02%
--	----------------	----------------	-------	-------

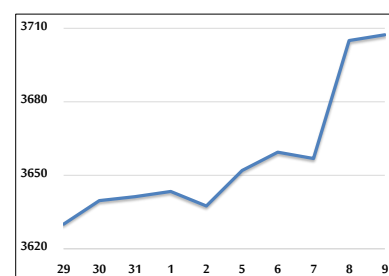
VALUE TRADED FROM 29/3 TO 9/4/2026



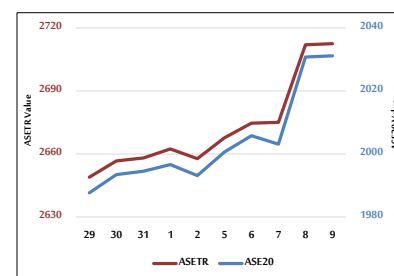
VALUE TRADED BY SECTOR THURSDAY 9/4/2026



ASE GENERAL FREE FLOAT WEIGHTED INDEX 29/3 TO 9/4/2026



ASE20 INDEX & ASETR INDEX FROM 29/3 TO 9/4/2026



ASE WEIGHTED INDEX FROM 29/3 TO 9/4/2026

