

Daily Summary for Amman Stock Exchange

VALUE TRADED (JD)

	2025	2026	NET CHANGE	CHANGE (%)
Daily	8,772,234	22,395,724	13,623,490	155.30%
Cumulative (1/4-8/4)	47,303,156	91,504,762	44,201,606	93.44%
Cumulative (4/1-8/4)	412,548,454	741,280,574	328,732,120	79.68%

NO. OF SHARES TRADED

	2025	2026	NET CHANGE	CHANGE (%)
Daily	3,237,619	5,878,803	2,641,184	81.58%
Cumulative (1/4-8/4)	20,735,698	22,734,064	1,998,366	9.64%
Cumulative (4/1-8/4)	216,645,597	257,734,357	41,088,760	18.97%

NO. OF TRANSACTIONS

	2025	2026	NET CHANGE	CHANGE (%)
Daily	2,551	5,068	2,517	98.67%
Cumulative (1/4-8/4)	14,034	20,670	6,636	47.29%
Cumulative (4/1-8/4)	139,185	212,381	73,196	52.59%

SOME FINANCIAL RATIOS FOR THE ASE (8/4/2026)

SECTOR	P/E	P/BV	DIVIDEND YIELD (%)	TURNOVER (%)
FINANCIAL	9.204	0.932	4.852	0.077
SERVICES	14.238	1.411	4.399	0.119
INDUSTRY	15.929	2.775	4.190	0.128
OVERALL	11.697	1.445	4.612	0.091

ASE GENERAL FREE FLOAT WEIGHTED INDEX ASEGI (1999=1000)

	TUESDAY 07/04/2026	WEDNESDAY 08/04/2026	% CHANGE	
			DAY BEFORE	YTD
GENERAL INDEX ASEGI	3656.8	3705.0	1.32%	2.59%
FINANCIAL	3621.2	3650.6	0.81%	-3.31%
SERVICES	2307.3	2372.7	2.84%	9.23%
INDUSTRY	9877.1	9926.4	0.50%	11.87%

ASE FREE FLOAT WEIGHTED INDEX ASE20 (2014=1000)

	2003.1	2030.8	1.38%	2.63%
--	--------	--------	-------	-------

TOTAL RETURN INDEX ASETR (2021=1074)

	2675.1	2712.0	1.38%	4.22%
--	--------	--------	-------	-------

ASE WEIGHTED INDEX (1991=1000)

	TUESDAY 07/04/2026	WEDNESDAY 08/04/2026	% CHANGE	
			DAY BEFORE	YTD
GENERAL	7414.6	7498.0	1.12%	6.26%
BANKS	9119.5	9251.8	1.45%	-2.03%
INSURANCE	1815.4	1814.4	-0.05%	1.75%
SERVICES	1106.8	1129.9	2.09%	3.87%
INDUSTRY	13018.3	13107.5	0.68%	14.95%

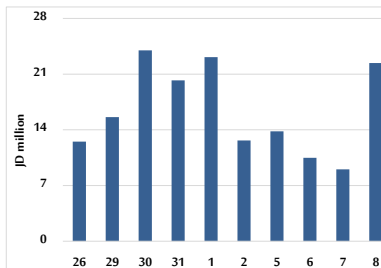
MARKET INDICES WEIGHTED BY FREE FLOAT MARKET CAP. (2012=1000)

	TUESDAY 07/04/2026	WEDNESDAY 08/04/2026	% CHANGE	
			DAY BEFORE	YTD
FIRST MARKET	2073.9	2101.1	1.31%	3.01%
SECOND MARKET	951.7	962.4	1.13%	-5.86%

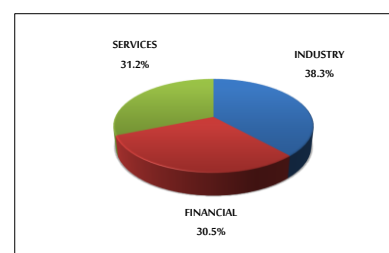
MARKET CAPITALIZATION (JD)

	27,734,074,819	28,032,278,808	1.08%	5.81%
--	----------------	----------------	-------	-------

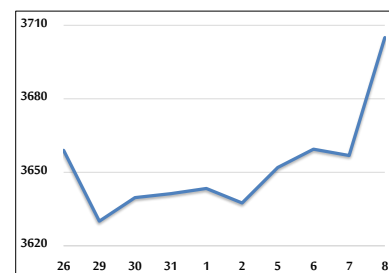
VALUE TRADED FROM 26/3 TO 8/4/2026



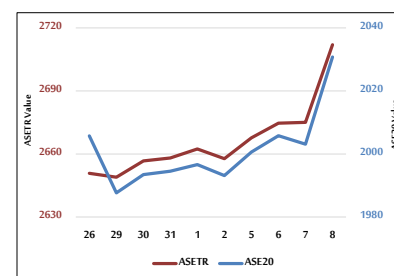
VALUE TRADED BY SECTOR WEDNESDAY 8/4/2026



ASE GENERAL FREE FLOAT WEIGHTED INDEX 26/3 TO 8/4/2026



ASE20 INDEX & ASETR INDEX FROM 26/3 TO 8/4/2026



ASE WEIGHTED INDEX FROM 26/3 TO 8/4/2026

