

Daily Summary for Amman Stock Exchange

VALUE TRADED (JD)

	2025	2026	NET CHANGE	CHANGE (%)
Daily	-	19,706,572	-	-
Cumulative (1/4-28/4)	131,896,399	327,624,945	195,728,546	148.40%
Cumulative (4/1-28/4)	497,141,697	977,400,757	480,259,060	96.60%

NO. OF SHARES TRADED

	2025	2026	NET CHANGE	CHANGE (%)
Daily	-	6,706,116	-	-
Cumulative (1/4-28/4)	65,568,170	94,101,215	28,533,045	43.52%
Cumulative (4/1-28/4)	261,478,069	329,101,508	67,623,439	25.86%

NO. OF TRANSACTIONS

	2025	2026	NET CHANGE	CHANGE (%)
Daily	-	5,530	-	-
Cumulative (1/4-28/4)	40,673	80,227	39,554	97.25%
Cumulative (4/1-28/4)	165,824	271,938	106,114	63.99%

SOME FINANCIAL RATIOS FOR THE ASE (28/4/2026)

SECTOR	P/E	P/BV	DIVIDEND YIELD (%)	TURNOVER (%)
FINANCIAL	9.422	0.954	5.110	0.057
SERVICES	15.777	1.563	4.564	0.198
INDUSTRY	16.500	2.873	4.049	0.205
OVERALL	12.175	1.504	4.675	0.103

ASE GENERAL FREE FLOAT WEIGHTED INDEX ASEGI (1999=1000)

	MONDAY 27/04/2026	TUESDAY 28/04/2026	% CHANGE	
			DAY BEFORE	YTD
GENERAL INDEX ASEGI	3861.7	3906.4	1.16%	8.16%
FINANCIAL	3723.0	3742.0	0.51%	-0.89%
SERVICES	2592.2	2660.2	2.62%	22.46%
INDUSTRY	10254.4	10330.4	0.74%	16.43%

ASE FREE FLOAT WEIGHTED INDEX ASE20 (2014=1000)

	2117.3	2143.8	1.25%	8.35%
--	--------	--------	-------	-------

TOTAL RETURN INDEX ASETR (2021=1074)

	2890.5	2938.2	1.65%	12.92%
--	--------	--------	-------	--------

ASE WEIGHTED INDEX (1991=1000)

	MONDAY 27/04/2026	TUESDAY 28/04/2026	% CHANGE	
			DAY BEFORE	YTD
GENERAL	7721.7	7804.0	1.07%	10.60%
BANKS	9395.8	9463.5	0.72%	0.21%
INSURANCE	1859.7	1878.4	1.00%	5.33%
SERVICES	1194.0	1224.2	2.53%	12.55%
INDUSTRY	13580.2	13721.8	1.04%	20.33%

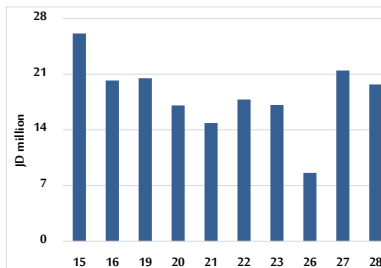
MARKET INDICES WEIGHTED BY FREE FLOAT MARKET CAP. (2012=1000)

	MONDAY 27/04/2026	TUESDAY 28/04/2026	% CHANGE	
			DAY BEFORE	YTD
FIRST MARKET	2189.3	2215.1	1.18%	8.59%
SECOND MARKET	1000.2	1004.1	0.39%	-1.79%

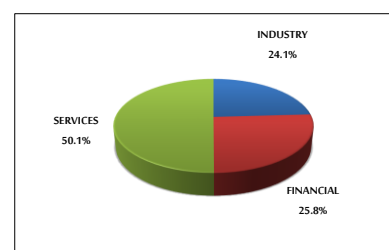
MARKET CAPITALIZATION (JD)

	28,890,857,139	29,184,693,723	1.02%	10.16%
--	----------------	----------------	-------	--------

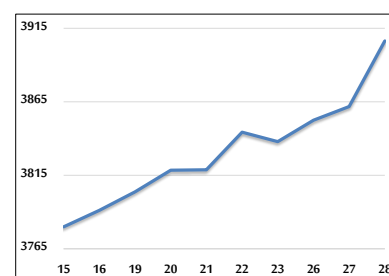
VALUE TRADED FROM 15/4 TO 28/4/2026



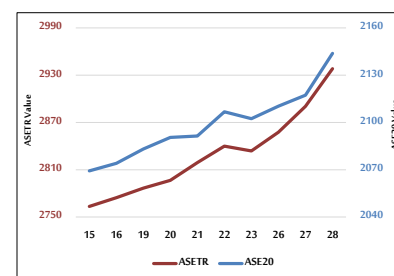
VALUE TRADED BY SECTOR TUESDAY 28/4/2026



ASE GENERAL FREE FLOAT WEIGHTED INDEX 15/4 TO 28/4/2026



ASE20 INDEX & ASETR INDEX FROM 15/4 TO 28/4/2026



ASE WEIGHTED INDEX FROM 15/4 TO 28/4/2026

