

Daily Summary for Amman Stock Exchange

VALUE TRADED (JD)

	2025	2026	NET CHANGE	CHANGE (%)
Daily	5,670,944	21,459,892	15,788,948	278.42%
Cumulative (1/4-27/4)	131,896,399	307,918,373	176,021,974	133.45%
Cumulative (4/1-27/4)	497,141,697	957,694,185	460,552,488	92.64%

NO. OF SHARES TRADED

	2025	2026	NET CHANGE	CHANGE (%)
Daily	2,988,260	7,492,236	4,503,976	150.72%
Cumulative (1/4-27/4)	65,568,170	87,395,099	21,826,929	33.29%
Cumulative (4/1-27/4)	261,478,069	322,395,392	60,917,323	23.30%

NO. OF TRANSACTIONS

	2025	2026	NET CHANGE	CHANGE (%)
Daily	2,224	4,781	2,557	114.97%
Cumulative (1/4-27/4)	40,673	74,697	34,024	83.65%
Cumulative (4/1-27/4)	165,824	266,408	100,584	60.66%

SOME FINANCIAL RATIOS FOR THE ASE (27/4/2026)

SECTOR	P/E	P/BV	DIVIDEND YIELD (%)	TURNOVER (%)
FINANCIAL	9.355	0.947	5.143	0.055
SERVICES	15.362	1.522	4.687	0.178
INDUSTRY	16.359	2.849	4.073	0.326
OVERALL	12.046	1.488	4.720	0.116

ASE GENERAL FREE FLOAT WEIGHTED INDEX ASEGI (1999=1000)

	SUNDAY 26/04/2026	MONDAY 27/04/2026	% CHANGE	
			DAY BEFORE	YTD
GENERAL INDEX ASEGI	3852.5	3861.7	0.24%	6.92%
FINANCIAL	3694.7	3723.0	0.76%	-1.39%
SERVICES	2605.9	2592.2	-0.53%	19.33%
INDUSTRY	10278.8	10254.4	-0.24%	15.57%

ASE FREE FLOAT WEIGHTED INDEX ASE20 (2014=1000)

	2110.4	2117.3	0.33%	7.01%
--	--------	--------	-------	-------

TOTAL RETURN INDEX ASETR (2021=1074)

	2857.7	2890.5	1.15%	11.08%
--	--------	--------	-------	--------

ASE WEIGHTED INDEX (1991=1000)

	SUNDAY 26/04/2026	MONDAY 27/04/2026	% CHANGE	
			DAY BEFORE	YTD
GENERAL	7713.2	7721.7	0.11%	9.43%
BANKS	9341.7	9395.8	0.58%	-0.51%
INSURANCE	1855.0	1859.7	0.25%	4.29%
SERVICES	1192.6	1194.0	0.12%	9.77%
INDUSTRY	13617.8	13580.2	-0.28%	19.09%

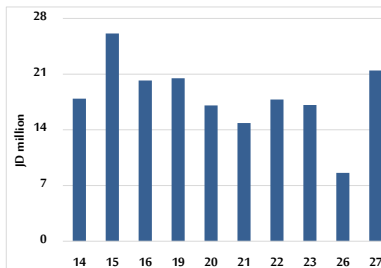
MARKET INDICES WEIGHTED BY FREE FLOAT MARKET CAP. (2012=1000)

	SUNDAY 26/04/2026	MONDAY 27/04/2026	% CHANGE	
			DAY BEFORE	YTD
FIRST MARKET	2183.5	2189.3	0.26%	7.33%
SECOND MARKET	995.9	1000.2	0.43%	-2.17%

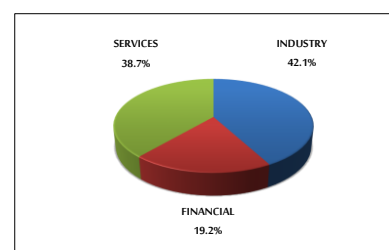
MARKET CAPITALIZATION (JD)

	28,857,687,356	28,890,857,139	0.11%	9.05%
--	----------------	----------------	-------	-------

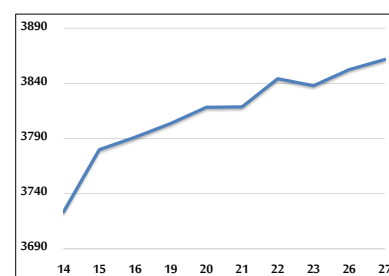
VALUE TRADED FROM 14/4 TO 27/4/2026



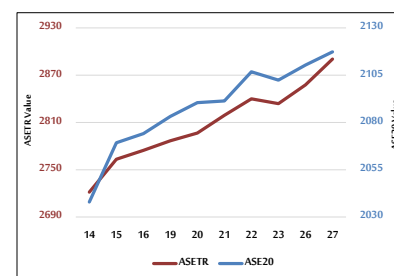
VALUE TRADED BY SECTOR MONDAY 27/4/2026



ASE GENERAL FREE FLOAT WEIGHTED INDEX 14/4 TO 27/4/2026



ASE20 INDEX & ASETR INDEX FROM 14/4 TO 27/4/2026



ASE WEIGHTED INDEX FROM 14/4 TO 27/4/2026

