

Daily Summary for Amman Stock Exchange

VALUE TRADED (JD)

	2025	2026	NET CHANGE	CHANGE (%)
Daily	5,847,842	8,592,831	2,744,989	46.94%
Cumulative (1/4-26/4)	126,225,455	286,458,481	160,233,026	126.94%
Cumulative (4/1-26/4)	491,470,753	936,234,293	444,763,540	90.50%

NO. OF SHARES TRADED

	2025	2026	NET CHANGE	CHANGE (%)
Daily	2,649,220	4,838,219	2,188,999	82.63%
Cumulative (1/4-26/4)	62,579,910	79,902,863	17,322,953	27.68%
Cumulative (4/1-26/4)	258,489,809	314,903,156	56,413,347	21.82%

NO. OF TRANSACTIONS

	2025	2026	NET CHANGE	CHANGE (%)
Daily	1,873	3,250	1,377	73.52%
Cumulative (1/4-26/4)	38,449	69,916	31,467	81.84%
Cumulative (4/1-26/4)	163,600	261,627	98,027	59.92%

SOME FINANCIAL RATIOS FOR THE ASE (26/4/2026)

SECTOR	P/E	P/BV	DIVIDEND YIELD (%)	TURNOVER (%)
FINANCIAL	9.304	0.942	5.171	0.041
SERVICES	15.394	1.525	4.672	0.066
INDUSTRY	16.391	2.855	4.065	0.250
OVERALL	12.033	1.487	4.724	0.075

ASE GENERAL FREE FLOAT WEIGHTED INDEX ASEGI (1999=1000)

	THURSDAY 23/04/2026	SUNDAY 26/04/2026	% CHANGE	
			DAY BEFORE	YTD
GENERAL INDEX ASEGI	3837.9	3852.5	0.38%	6.67%
FINANCIAL	3695.0	3694.7	-0.01%	-2.14%
SERVICES	2593.2	2605.9	0.49%	19.96%
INDUSTRY	10140.6	10278.8	1.36%	15.85%

ASE FREE FLOAT WEIGHTED INDEX ASE20 (2014=1000)

	2102.4	2110.4	0.38%	6.66%
--	--------	--------	-------	-------

TOTAL RETURN INDEX ASETR (2021=1074)

	2833.9	2857.7	0.84%	9.82%
--	--------	--------	-------	-------

ASE WEIGHTED INDEX (1991=1000)

	THURSDAY 23/04/2026	SUNDAY 26/04/2026	% CHANGE	
			DAY BEFORE	YTD
GENERAL	7678.6	7713.2	0.45%	9.31%
BANKS	9418.4	9341.7	-0.81%	-1.08%
INSURANCE	1847.7	1855.0	0.40%	4.03%
SERVICES	1175.1	1192.6	1.49%	9.64%
INDUSTRY	13444.8	13617.8	1.29%	19.42%

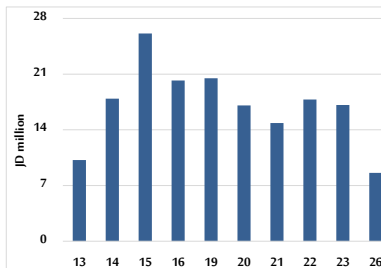
MARKET INDICES WEIGHTED BY FREE FLOAT MARKET CAP. (2012=1000)

	THURSDAY 23/04/2026	SUNDAY 26/04/2026	% CHANGE	
			DAY BEFORE	YTD
FIRST MARKET	2175.0	2183.5	0.39%	7.05%
SECOND MARKET	992.9	995.9	0.30%	-2.59%

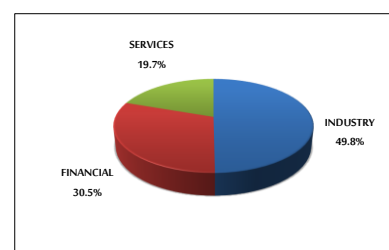
MARKET CAPITALIZATION (JD)

	28,734,384,982	28,857,687,356	0.43%	8.92%
--	----------------	----------------	-------	-------

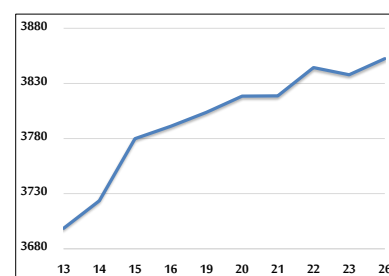
VALUE TRADED FROM 13/4 TO 26/4/2026



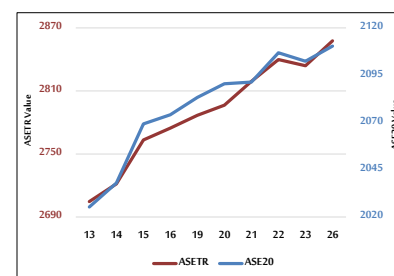
VALUE TRADED BY SECTOR SUNDAY 26/4/2026



ASE GENERAL FREE FLOAT WEIGHTED INDEX 13/4 TO 26/4/2026



ASE20 INDEX & ASETR INDEX FROM 13/4 TO 26/4/2026



ASE WEIGHTED INDEX FROM 13/4 TO 26/4/2026

