

Daily Summary for Amman Stock Exchange

VALUE TRADED (JD)

	2025	2026	NET CHANGE	CHANGE (%)
Daily	3,927,083	17,111,859	13,184,776	335.74%
Cumulative (1/4-23/4)	120,377,613	277,865,650	157,488,037	130.83%
Cumulative (4/1-23/4)	485,622,911	927,641,462	442,018,551	91.02%

NO. OF SHARES TRADED

	2025	2026	NET CHANGE	CHANGE (%)
Daily	2,137,564	4,774,597	2,637,033	123.37%
Cumulative (1/4-23/4)	59,930,690	75,064,644	15,133,954	25.25%
Cumulative (4/1-23/4)	255,840,589	310,064,937	54,224,348	21.19%

NO. OF TRANSACTIONS

	2025	2026	NET CHANGE	CHANGE (%)
Daily	1,591	4,331	2,740	172.22%
Cumulative (1/4-23/4)	36,576	66,666	30,090	82.27%
Cumulative (4/1-23/4)	161,727	258,377	96,650	59.76%

SOME FINANCIAL RATIOS FOR THE ASE (23/4/2026)

SECTOR	P/E	P/BV	DIVIDEND YIELD (%)	TURNOVER (%)
FINANCIAL	9.373	0.949	5.133	0.039
SERVICES	15.216	1.508	4.727	0.150
INDUSTRY	16.174	2.817	4.119	0.141
OVERALL	11.979	1.480	4.745	0.074

ASE GENERAL FREE FLOAT WEIGHTED INDEX ASEGI (1999=1000)

	WEDNESDAY 22/04/2026	THURSDAY 23/04/2026	% CHANGE	
			DAY BEFORE	YTD
GENERAL INDEX ASEGI	3844.3	3837.9	-0.17%	6.26%
FINANCIAL	3688.1	3695.0	0.19%	-2.13%
SERVICES	2596.9	2593.2	-0.14%	19.38%
INDUSTRY	10266.0	10140.6	-1.22%	14.29%

ASE FREE FLOAT WEIGHTED INDEX ASE20 (2014=1000)

	2025	2026	% CHANGE	YTD
	2106.8	2102.4	-0.21%	6.25%

TOTAL RETURN INDEX ASETR (2021=1074)

	2025	2026	% CHANGE	YTD
	2839.9	2833.9	-0.21%	8.91%

ASE WEIGHTED INDEX (1991=1000)

	WEDNESDAY 22/04/2026	THURSDAY 23/04/2026	% CHANGE	
			DAY BEFORE	YTD
GENERAL	7736.0	7678.6	-0.74%	8.82%
BANKS	9423.2	9418.4	-0.05%	-0.27%
INSURANCE	1849.2	1847.7	-0.08%	3.61%
SERVICES	1171.4	1175.1	0.32%	8.03%
INDUSTRY	13652.2	13444.8	-1.52%	17.91%

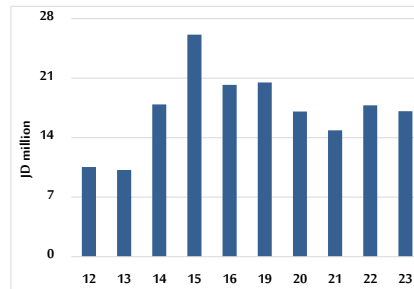
MARKET INDICES WEIGHTED BY FREE FLOAT MARKET CAP. (2012=1000)

	WEDNESDAY 22/04/2026	THURSDAY 23/04/2026	% CHANGE	
			DAY BEFORE	YTD
FIRST MARKET	2179.0	2175.0	-0.18%	6.63%
SECOND MARKET	987.0	992.9	0.60%	-2.88%

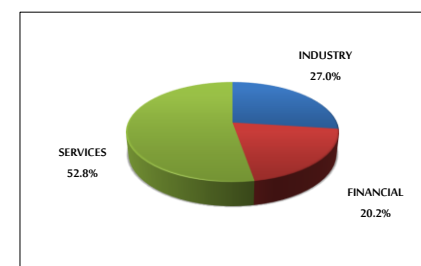
MARKET CAPITALIZATION (JD)

	2025	2026	% CHANGE	YTD
	28,935,323,233	28,734,384,982	-0.69%	8.46%

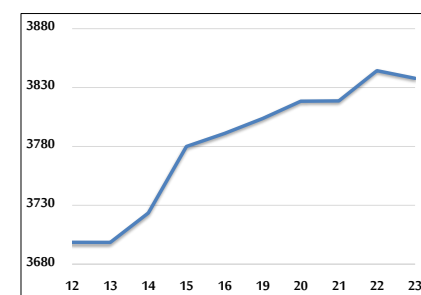
VALUE TRADED FROM 12/4 TO 23/4/2026



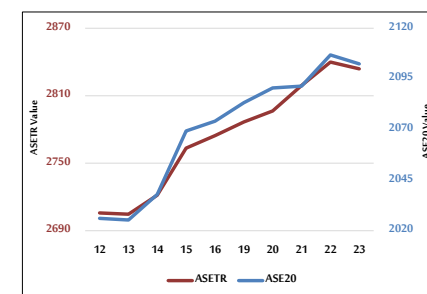
VALUE TRADED BY SECTOR THURSDAY 23/4/2026



ASE GENERAL FREE FLOAT WEIGHTED INDEX 12/4 TO 23/4/2026



ASE20 INDEX & ASETR INDEX FROM 12/4 TO 23/4/2026



ASE WEIGHTED INDEX FROM 12/4 TO 23/4/2026

