

Daily Summary for Amman Stock Exchange

VALUE TRADED (JD)

	2025	2026	NET CHANGE	CHANGE (%)
Daily	6,223,553	17,064,793	10,841,240	174.20%
Cumulative (1/4-20/4)	104,259,286	228,095,304	123,836,018	118.78%
Cumulative (4/1-20/4)	469,504,584	877,871,116	408,366,532	86.98%

NO. OF SHARES TRADED

	2025	2026	NET CHANGE	CHANGE (%)
Daily	3,839,699	4,851,881	1,012,182	26.36%
Cumulative (1/4-20/4)	50,482,751	60,512,315	10,029,564	19.87%
Cumulative (4/1-20/4)	246,392,650	295,512,608	49,119,958	19.94%

NO. OF TRANSACTIONS

	2025	2026	NET CHANGE	CHANGE (%)
Daily	2,242	3,255	1,013	45.18%
Cumulative (1/4-20/4)	30,416	53,657	23,241	76.41%
Cumulative (4/1-20/4)	155,567	245,368	89,801	57.72%

SOME FINANCIAL RATIOS FOR THE ASE (20/4/2026)

SECTOR	P/E	P/BV	DIVIDEND YIELD (%)	TURNOVER (%)
FINANCIAL	9.265	0.938	5.193	0.058
SERVICES	14.858	1.472	4.826	0.101
INDUSTRY	16.795	2.925	3.967	0.121
OVERALL	12.100	1.495	4.697	0.075

ASE GENERAL FREE FLOAT WEIGHTED INDEX ASEGI (1999=1000)

	SUNDAY 19/04/2026	MONDAY 20/04/2026	% CHANGE	
			DAY BEFORE	YTD
GENERAL INDEX ASEGI	3803.7	3818.4	0.39%	5.73%
FINANCIAL	3660.3	3669.2	0.24%	-2.82%
SERVICES	2507.9	2534.7	1.07%	16.68%
INDUSTRY	10445.2	10425.5	-0.19%	17.50%

ASE FREE FLOAT WEIGHTED INDEX ASE20 (2014=1000)

	2083.2	2090.5	0.35%	5.65%
--	--------	--------	-------	-------

TOTAL RETURN INDEX ASETR (2021=1074)

	2786.7	2796.5	0.35%	7.47%
--	--------	--------	-------	-------

ASE WEIGHTED INDEX (1991=1000)

	SUNDAY 19/04/2026	MONDAY 20/04/2026	% CHANGE	
			DAY BEFORE	YTD
GENERAL	7753.2	7755.7	0.03%	9.92%
BANKS	9259.3	9309.3	0.54%	-1.42%
INSURANCE	1836.0	1832.6	-0.18%	2.77%
SERVICES	1134.0	1139.3	0.46%	4.74%
INDUSTRY	13994.2	13933.0	-0.44%	22.19%

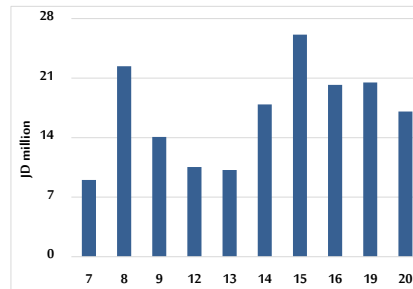
MARKET INDICES WEIGHTED BY FREE FLOAT MARKET CAP. (2012=1000)

	SUNDAY 19/04/2026	MONDAY 20/04/2026	% CHANGE	
			DAY BEFORE	YTD
FIRST MARKET	2155.1	2163.5	0.39%	6.06%
SECOND MARKET	974.6	978.3	0.38%	-4.31%

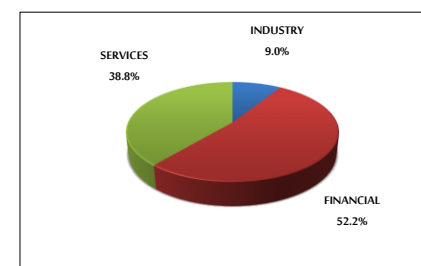
MARKET CAPITALIZATION (JD)

	28,994,168,010	29,004,364,734	0.04%	9.48%
--	----------------	----------------	-------	-------

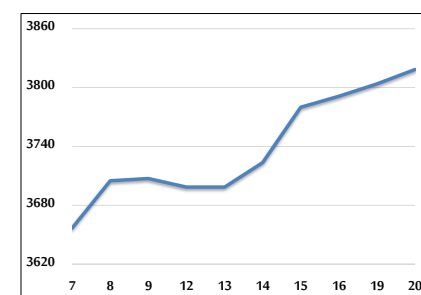
VALUE TRADED FROM 7/4 TO 20/4/2026



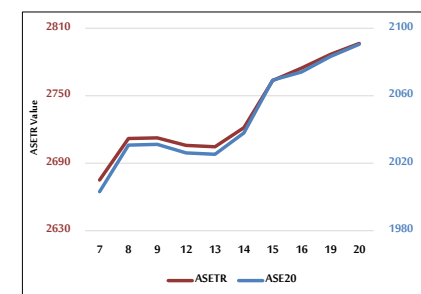
VALUE TRADED BY SECTOR MONDAY 20/4/2026



ASE GENERAL FREE FLOAT WEIGHTED INDEX 7/4 TO 20/4/2026



ASE20 INDEX & ASETR INDEX FROM 7/4 TO 20/4/2026



ASE WEIGHTED INDEX FROM 7/4 TO 20/4/2026

