

Daily Summary for Amman Stock Exchange

VALUE TRADED (JD)

	2024	2025	NET CHANGE	CHANGE (%)
Daily	6,924,680	8,894,308	1,969,628	28.44%
Cumulative (3/8-5/8)	16,053,083	32,248,815	16,195,732	100.89%
Cumulative (2/1-5/8)	730,830,469	1,146,347,515	415,517,046	56.86%

NO. OF SHARES TRADED

	2024	2025	NET CHANGE	CHANGE (%)
Daily	4,016,878	5,609,885	1,593,007	39.66%
Cumulative (3/8-5/8)	9,707,140	18,365,363	8,658,223	89.19%
Cumulative (2/1-5/8)	520,184,869	565,584,298	45,399,429	8.73%

NO. OF TRANSACTIONS

	2024	2025	NET CHANGE	CHANGE (%)
Daily	2,146	4,114	1,968	91.71%
Cumulative (3/8-5/8)	6,487	12,509	6,022	92.83%
Cumulative (2/1-5/8)	336,592	370,654	34,062	10.12%

SOME FINANCIAL RATIOS FOR THE ASE (5/8/2025)

SECTOR	P/E	P/BV	DIVIDEND YIELD (%)	TURNOVER (%)
FINANCIAL	8.072	0.859	5.824	0.089
SERVICES	12.836	1.198	5.946	0.095
INDUSTRY	13.282	2.163	5.648	0.070
OVERALL	9.793	1.218	6.028	0.088

ASE GENERAL FREE FLOAT WEIGHTED INDEX ASEGI (1999=1000)

	MONDAY 04/08/2025	TUESDAY 05/08/2025	% CHANGE	
			DAY BEFORE	YTD
GENERAL INDEX ASEGI	2891.0	2891.2	0.01%	16.17%
FINANCIAL	2993.7	2982.5	-0.38%	12.50%
SERVICES	1834.4	1835.4	0.05%	8.39%
INDUSTRY	7289.9	7383.4	1.28%	33.48%

ASE FREE FLOAT WEIGHTED INDEX ASE20 (2014=1000)

	2024	2025	% CHANGE	TURNOVER (%)
	1567.5	1566.1	-0.09%	16.52%

TOTAL RETURN INDEX ASETR (2021=1074)

	2024	2025	% CHANGE	TURNOVER (%)
	2061.5	2059.6	-0.09%	25.47%

ASE WEIGHTED INDEX (1991=1000)

	MONDAY 04/08/2025	TUESDAY 05/08/2025	% CHANGE	
			DAY BEFORE	YTD
GENERAL	5816.7	5834.9	0.31%	25.93%
BANKS	7732.2	7692.4	-0.51%	17.38%
INSURANCE	1706.5	1703.7	-0.16%	23.81%
SERVICES	934.4	938.4	0.43%	8.65%
INDUSTRY	9335.6	9439.8	1.12%	40.08%

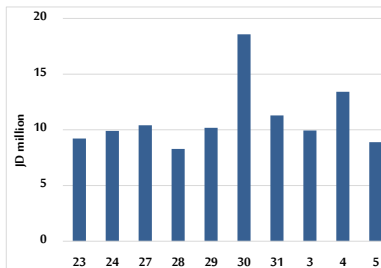
MARKET INDICES WEIGHTED BY FREE FLOAT MARKET CAP. (2012=1000)

	MONDAY 04/08/2025	TUESDAY 05/08/2025	% CHANGE	
			DAY BEFORE	YTD
FIRST MARKET	1622.6	1621.5	-0.06%	16.19%
SECOND MARKET	932.2	935.8	0.39%	12.40%

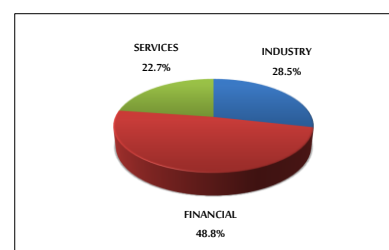
MARKET CAPITALIZATION (JD)

	2024	2025	% CHANGE	TURNOVER (%)
	21,978,333,217	22,042,424,180	0.29%	24.84%

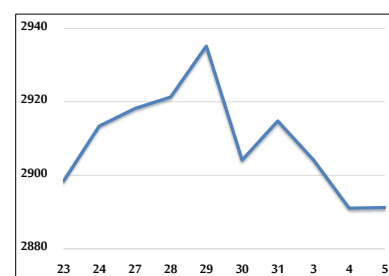
VALUE TRADED FROM 23/7 TO 5/8/2025



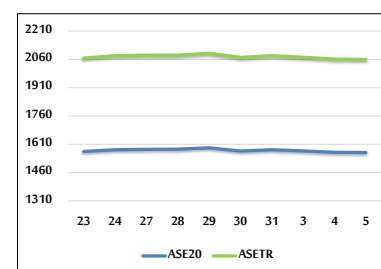
VALUE TRADED BY SECTOR TUESDAY 5/8/2025



ASE GENERAL FREE FLOAT WEIGHTED INDEX 23/7 TO 5/8/2025



ASE20 INDEX & ASETR INDEX FROM 23/7 TO 5/8/2025



ASE WEIGHTED INDEX FROM 23/7 TO 5/8/2025

