

Daily Summary for Amman Stock Exchange

VALUE TRADED (JD)

	2024	2025	NET CHANGE	CHANGE (%)
Daily	3,694,920	9,237,848	5,542,928	150.01%
Cumulative (1/7-9/7)	25,985,896	70,726,456	44,740,560	172.17%
Cumulative (2/1-9/7)	648,207,443	924,579,123	276,371,680	42.64%

NO. OF SHARES TRADED

	2024	2025	NET CHANGE	CHANGE (%)
Daily	2,600,446	4,610,014	2,009,568	77.28%
Cumulative (1/7-9/7)	25,994,506	26,291,188	296,682	1.14%
Cumulative (2/1-9/7)	454,302,331	452,550,528	-1,751,803	-0.39%

NO. OF TRANSACTIONS

	2024	2025	NET CHANGE	CHANGE (%)
Daily	2,601	3,539	938	36.06%
Cumulative (1/7-9/7)	15,372	23,715	8,343	54.27%
Cumulative (2/1-9/7)	292,631	298,985	6,354	2.17%

SOME FINANCIAL RATIOS FOR THE ASE (9/7/2025)

SECTOR	P/E	P/BV	DIVIDEND YIELD (%)	TURNOVER (%)
FINANCIAL	8.277	0.853	5.900	0.072
SERVICES	13.592	1.203	5.922	0.097
INDUSTRY	12.868	2.097	5.824	0.043
OVERALL	9.812	1.197	6.133	0.073

ASE GENERAL FREE FLOAT WEIGHTED INDEX ASEGI (1999=1000)

	TUESDAY 08/07/2025	WEDNESDAY 09/07/2025	% CHANGE	
			DAY BEFORE	YTD
GENERAL INDEX ASEGI	2835.6	2844.3	0.31%	14.28%
FINANCIAL	2912.0	2925.4	0.46%	10.35%
SERVICES	1833.1	1836.9	0.21%	8.48%
INDUSTRY	7199.3	7172.7	-0.37%	29.67%

ASE FREE FLOAT WEIGHTED INDEX ASE20 (2014=1000)

	2024	2025	0.41%	15.15%
	1541.3	1547.6	0.41%	15.15%

TOTAL RETURN INDEX ASETR (2021=1074)

	2024	2025	0.41%	23.98%
	2026.9	2035.2	0.41%	23.98%

ASE WEIGHTED INDEX (1991=1000)

	TUESDAY 08/07/2025	WEDNESDAY 09/07/2025	% CHANGE	
			DAY BEFORE	YTD
GENERAL	5721.8	5735.1	0.23%	23.77%
BANKS	7638.3	7673.7	0.46%	17.10%
INSURANCE	1608.3	1608.3	0.00%	16.88%
SERVICES	934.0	939.2	0.55%	8.75%
INDUSTRY	9124.8	9119.1	-0.06%	35.32%

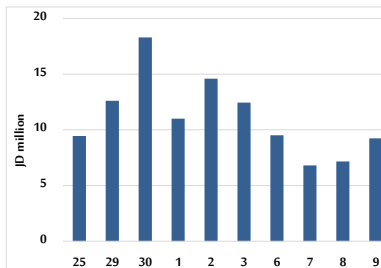
MARKET INDICES WEIGHTED BY FREE FLOAT MARKET CAP. (2012=1000)

	TUESDAY 08/07/2025	WEDNESDAY 09/07/2025	% CHANGE	
			DAY BEFORE	YTD
FIRST MARKET	1594.8	1600.5	0.35%	14.68%
SECOND MARKET	876.4	871.0	-0.61%	4.62%

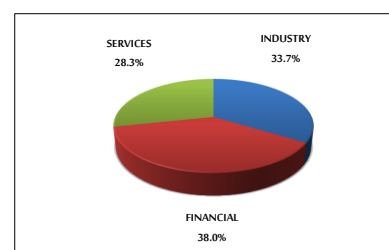
MARKET CAPITALIZATION (JD)

	2024	2025	0.18%	22.92%
	21,663,999,398	21,702,061,015	0.18%	22.92%

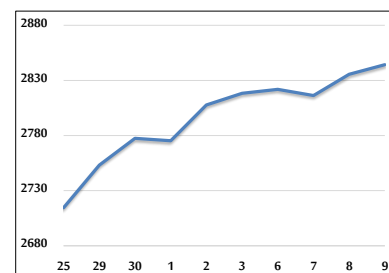
VALUE TRADED FROM 25/6 TO 9/7/2025



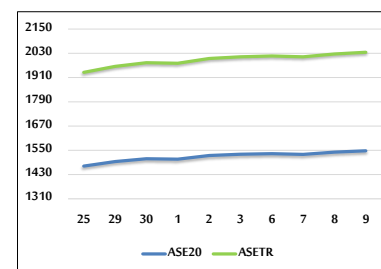
VALUE TRADED BY SECTOR WEDNESDAY 9/7/2025



ASE GENERAL FREE FLOAT WEIGHTED INDEX 25/6 TO 9/7/2025



ASE20 INDEX & ASETR INDEX FROM 25/6 TO 9/7/2025



ASE WEIGHTED INDEX FROM 25/6 TO 9/7/2025

