

Daily Summary for Amman Stock Exchange

VALUE TRADED (JD)

	2024	2025	NET CHANGE	CHANGE (%)
Daily	5,946,093	7,157,053	1,210,960	20.37%
Cumulative (1/7-8/7)	22,290,976	61,488,608	39,197,632	175.85%
Cumulative (2/1-8/7)	644,512,523	915,341,275	270,828,752	42.02%

NO. OF SHARES TRADED

	2024	2025	NET CHANGE	CHANGE (%)
Daily	5,964,714	3,247,841	-2,716,873	-45.55%
Cumulative (1/7-8/7)	23,394,060	21,681,174	-1,712,886	-7.32%
Cumulative (2/1-8/7)	451,701,885	447,940,514	-3,761,371	-0.83%

NO. OF TRANSACTIONS

	2024	2025	NET CHANGE	CHANGE (%)
Daily	2,121	2,902	781	36.82%
Cumulative (1/7-8/7)	12,771	20,176	7,405	57.98%
Cumulative (2/1-8/7)	290,030	295,446	5,416	1.87%

SOME FINANCIAL RATIOS FOR THE ASE (8/7/2025)

SECTOR	P/E	P/BV	DIVIDEND YIELD (%)	TURNOVER (%)
FINANCIAL	8.244	0.850	5.923	0.049
SERVICES	13.540	1.199	5.944	0.070
INDUSTRY	12.887	2.100	5.816	0.034
OVERALL	9.789	1.194	6.147	0.051

ASE GENERAL FREE FLOAT WEIGHTED INDEX ASEGI (1999=1000)

	MONDAY 07/07/2025	TUESDAY 08/07/2025	% CHANGE	
			DAY BEFORE	YTD
GENERAL INDEX ASEGI	2816.2	2835.6	0.69%	13.94%
FINANCIAL	2898.3	2912.0	0.47%	9.85%
SERVICES	1835.8	1833.1	-0.15%	8.25%
INDUSTRY	7039.5	7199.3	2.27%	30.15%

ASE FREE FLOAT WEIGHTED INDEX ASE20 (2014=1000)

	2024	2025	0.73%	14.68%
	1530.2	1541.3	0.73%	14.68%

TOTAL RETURN INDEX ASETR (2021=1074)

	2024	2025	0.73%	23.48%
	2012.4	2026.9	0.73%	23.48%

ASE WEIGHTED INDEX (1991=1000)

	MONDAY 07/07/2025	TUESDAY 08/07/2025	% CHANGE	
			DAY BEFORE	YTD
GENERAL	5654.9	5721.8	1.18%	23.49%
BANKS	7609.3	7638.3	0.38%	16.56%
INSURANCE	1610.7	1608.3	-0.14%	16.88%
SERVICES	935.3	934.0	-0.13%	8.15%
INDUSTRY	8919.3	9124.8	2.30%	35.40%

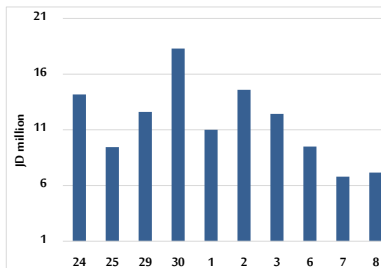
MARKET INDICES WEIGHTED BY FREE FLOAT MARKET CAP. (2012=1000)

	MONDAY 07/07/2025	TUESDAY 08/07/2025	% CHANGE	
			DAY BEFORE	YTD
FIRST MARKET	1583.0	1594.8	0.74%	14.27%
SECOND MARKET	881.1	876.4	-0.54%	5.26%

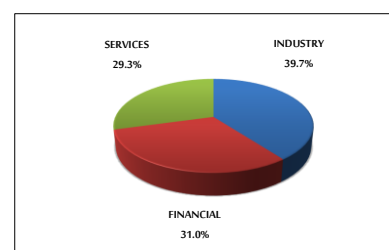
MARKET CAPITALIZATION (JD)

	2024	2025	1.10%	22.70%
	21,427,848,475	21,663,999,398	1.10%	22.70%

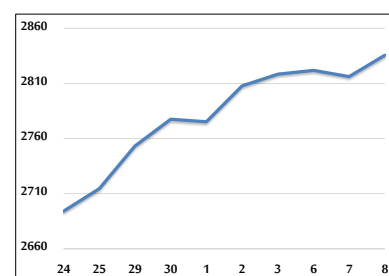
VALUE TRADED FROM 24/6 TO 8/7/2025



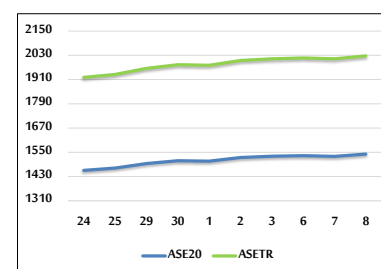
VALUE TRADED BY SECTOR TUESDAY 8/7/2025



ASE GENERAL FREE FLOAT WEIGHTED INDEX 24/6 TO 8/7/2025



ASE20 INDEX & ASETR INDEX FROM 24/6 TO 8/7/2025



ASE WEIGHTED INDEX FROM 24/6 TO 8/7/2025

