

Daily Summary for Amman Stock Exchange

VALUE TRADED (JD)

	2024	2025	NET CHANGE	CHANGE (%)
Daily	2,685,361	6,800,554	4,115,193	153.25%
Cumulative (1/7-7/7)	16,344,883	54,331,555	37,986,672	232.41%
Cumulative (2/1-7/7)	638,566,430	908,184,222	269,617,792	42.22%

NO. OF SHARES TRADED

	2024	2025	NET CHANGE	CHANGE (%)
Daily	3,150,748	3,461,002	310,254	9.85%
Cumulative (1/7-7/7)	17,429,346	18,433,333	1,003,987	5.76%
Cumulative (2/1-7/7)	445,737,171	444,692,673	-1,044,498	-0.23%

NO. OF TRANSACTIONS

	2024	2025	NET CHANGE	CHANGE (%)
Daily	2,006	3,042	1,036	51.65%
Cumulative (1/7-7/7)	10,650	17,274	6,624	62.20%
Cumulative (2/1-7/7)	287,909	292,544	4,635	1.61%

SOME FINANCIAL RATIOS FOR THE ASE (7/7/2025)

SECTOR	P/E	P/BV	DIVIDEND YIELD (%)	TURNOVER (%)
FINANCIAL	8.218	0.847	5.942	0.042
SERVICES	13.543	1.199	5.943	0.110
INDUSTRY	12.589	2.052	5.953	0.043
OVERALL	9.675	1.180	6.220	0.055

ASE GENERAL FREE FLOAT WEIGHTED INDEX ASEGI (1999=1000)

	SUNDAY 06/07/2025	MONDAY 07/07/2025	% CHANGE	
			DAY BEFORE	YTD
GENERAL INDEX ASEGI	2821.9	2816.2	-0.20%	13.16%
FINANCIAL	2901.3	2898.3	-0.11%	9.33%
SERVICES	1834.3	1835.8	0.08%	8.41%
INDUSTRY	7103.7	7039.5	-0.90%	27.27%

ASE FREE FLOAT WEIGHTED INDEX ASE20 (2014=1000)

	1533.4	1530.2	-0.21%	13.85%
--	--------	--------	--------	--------

TOTAL RETURN INDEX ASETR (2021=1074)

	2016.6	2012.4	-0.21%	22.59%
--	--------	--------	--------	--------

ASE WEIGHTED INDEX (1991=1000)

	SUNDAY 06/07/2025	MONDAY 07/07/2025	% CHANGE	
			DAY BEFORE	YTD
GENERAL	5680.3	5654.9	-0.45%	22.04%
BANKS	7626.5	7609.3	-0.22%	16.12%
INSURANCE	1611.5	1610.7	-0.05%	17.05%
SERVICES	929.4	935.3	0.63%	8.29%
INDUSTRY	9000.7	8919.3	-0.90%	32.35%

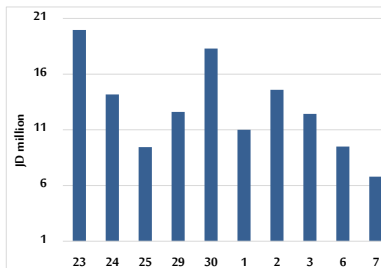
MARKET INDICES WEIGHTED BY FREE FLOAT MARKET CAP. (2012=1000)

	SUNDAY 06/07/2025	MONDAY 07/07/2025	% CHANGE	
			DAY BEFORE	YTD
FIRST MARKET	1586.8	1583.0	-0.24%	13.43%
SECOND MARKET	875.4	881.1	0.65%	5.83%

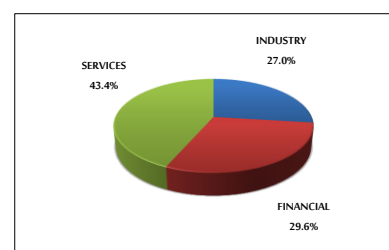
MARKET CAPITALIZATION (JD)

	21,516,407,366	21,427,848,475	-0.41%	21.36%
--	----------------	----------------	--------	--------

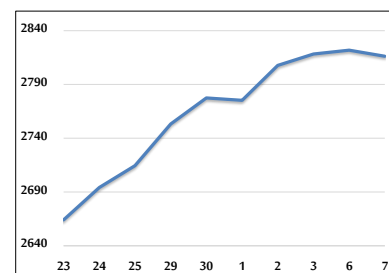
VALUE TRADED FROM 23/6 TO 7/7/2025



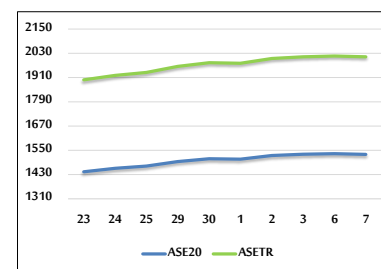
VALUE TRADED BY SECTOR MONDAY 7/7/2025



ASE GENERAL FREE FLOAT WEIGHTED INDEX FROM 23/6 TO 7/7/2025



ASE20 INDEX & ASETR INDEX FROM 23/6 TO 7/7/2025



ASE WEIGHTED INDEX FROM 23/6 TO 7/7/2025

