

Daily Summary for Amman Stock Exchange

VALUE TRADED (JD)

	2024	2025	NET CHANGE	CHANGE (%)
Daily	5,066,167	9,902,659	4,836,492	95.47%
Cumulative (1/7-24/7)	70,976,680	201,524,761	130,548,081	183.93%
Cumulative (2/1-24/7)	693,198,227	1,055,377,428	362,179,201	52.25%

NO. OF SHARES TRADED

	2024	2025	NET CHANGE	CHANGE (%)
Daily	4,518,597	6,440,294	1,921,697	42.53%
Cumulative (1/7-24/7)	67,027,266	91,654,127	24,626,861	36.74%
Cumulative (2/1-24/7)	495,335,091	517,913,467	22,578,376	4.56%

NO. OF TRANSACTIONS

	2024	2025	NET CHANGE	CHANGE (%)
Daily	3,000	4,182	1,182	39.40%
Cumulative (1/7-24/7)	43,182	62,804	19,622	45.44%
Cumulative (2/1-24/7)	320,441	338,074	17,633	5.50%

SOME FINANCIAL RATIOS FOR THE ASE (24/7/2025)

SECTOR	P/E	P/BV	DIVIDEND YIELD (%)	TURNOVER (%)
FINANCIAL	8.480	0.872	5.790	0.114
SERVICES	13.572	1.202	5.930	0.083
INDUSTRY	13.805	2.250	5.429	0.065
OVERALL	10.229	1.248	5.882	0.102

ASE GENERAL FREE FLOAT WEIGHTED INDEX ASEGI (1999=1000)

	WEDNESDAY 23/07/2025	THURSDAY 24/07/2025	% CHANGE	
			DAY BEFORE	YTD
GENERAL INDEX ASEGI	2898.4	2913.4	0.52%	17.06%
FINANCIAL	2971.0	2990.5	0.66%	12.81%
SERVICES	1831.7	1829.3	-0.13%	8.03%
INDUSTRY	7569.6	7634.6	0.86%	38.03%

ASE FREE FLOAT WEIGHTED INDEX ASE20 (2014=1000)

	2024	2025	0.59%	17.63%
--	------	------	-------	--------

TOTAL RETURN INDEX ASETR (2021=1074)

	2066.9	2079.1	0.59%	26.65%
--	--------	--------	-------	--------

ASE WEIGHTED INDEX (1991=1000)

	WEDNESDAY 23/07/2025	THURSDAY 24/07/2025	% CHANGE	
			DAY BEFORE	YTD
GENERAL	5933.7	5979.1	0.76%	29.04%
BANKS	7779.7	7822.3	0.55%	19.36%
INSURANCE	1645.4	1645.8	0.02%	19.60%
SERVICES	949.2	948.7	-0.05%	9.85%
INDUSTRY	9669.9	9781.0	1.15%	45.14%

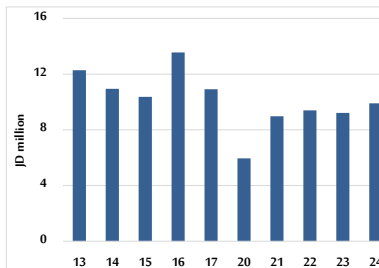
MARKET INDICES WEIGHTED BY FREE FLOAT MARKET CAP. (2012=1000)

	WEDNESDAY 23/07/2025	THURSDAY 24/07/2025	% CHANGE	
			DAY BEFORE	YTD
FIRST MARKET	1626.9	1635.8	0.55%	17.21%
SECOND MARKET	918.2	919.0	0.08%	10.38%

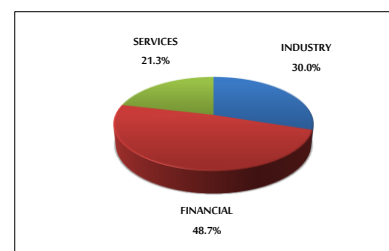
MARKET CAPITALIZATION (JD)

	22,392,254,949	22,551,052,285	0.71%	27.73%
--	----------------	----------------	-------	--------

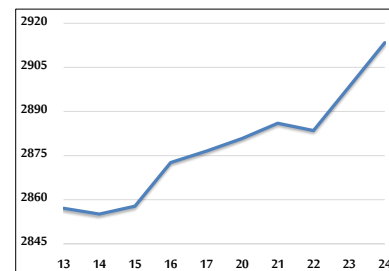
VALUE TRADED FROM 13/7 TO 24/7/2025



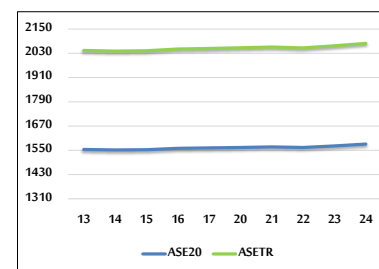
VALUE TRADED BY SECTOR THURSDAY 24/7/2025



ASE GENERAL FREE FLOAT WEIGHTED INDEX 13/7 TO 24/7/2025



ASE20 INDEX & ASETR INDEX FROM 13/7 TO 24/7/2025



ASE WEIGHTED INDEX FROM 13/7 TO 24/7/2025

