

## Daily Summary for Amman Stock Exchange

### VALUE TRADED (JD)

	2024	2025	NET CHANGE	CHANGE (%)
Daily	4,624,641	7,644,410	3,019,769	65.30%
Cumulative (1/6-11/6)	20,385,157	45,259,343	24,874,186	122.02%
Cumulative (2/1-11/6)	577,161,675	732,775,259	155,613,584	26.96%

### NO. OF SHARES TRADED

	2024	2025	NET CHANGE	CHANGE (%)
Daily	3,099,778	2,989,863	-109,915	-3.55%
Cumulative (1/6-11/6)	16,203,821	17,697,729	1,493,908	9.22%
Cumulative (2/1-11/6)	392,740,380	377,231,064	-15,509,316	-3.95%

### NO. OF TRANSACTIONS

	2024	2025	NET CHANGE	CHANGE (%)
Daily	2,981	2,865	-116	-3.89%
Cumulative (1/6-11/6)	13,378	14,736	1,358	10.15%
Cumulative (2/1-11/6)	255,938	243,335	-12,603	-4.92%

### SOME FINANCIAL RATIOS FOR THE ASE (11/6/2025)

SECTOR	P/E	P/BV	DIVIDEND YIELD (%)	TURNOVER (%)
FINANCIAL	7.683	0.795	6.361	0.036
SERVICES	13.124	1.162	6.132	0.088
INDUSTRY	11.455	1.867	6.542	0.054
OVERALL	8.944	1.092	6.708	0.049

### ASE GENERAL FREE FLOAT WEIGHTED INDEX ASEGI (1999=1000)

	WEDNESDAY 04/06/2025	WEDNESDAY 11/06/2025	% CHANGE	
			DAY BEFORE	YTD
GENERAL INDEX ASEGI	2672.2	2684.6	0.46%	7.87%
FINANCIAL	2813.2	2810.9	-0.08%	6.03%
SERVICES	1754.5	1755.4	0.05%	3.67%
INDUSTRY	6318.3	6475.3	2.48%	17.07%

### ASE FREE FLOAT WEIGHTED INDEX ASE20 (2014=1000)

	1446.6	1454.7	0.56%	8.23%
--	--------	--------	-------	-------

### TOTAL RETURN INDEX ASETR (2021=1074)

	1902.4	1913.0	0.56%	16.54%
--	--------	--------	-------	--------

### ASE WEIGHTED INDEX (1991=1000)

	WEDNESDAY 04/06/2025	WEDNESDAY 11/06/2025	% CHANGE	
			DAY BEFORE	YTD
GENERAL	5215.9	5298.2	1.58%	14.34%
BANKS	7275.6	7282.0	0.09%	11.12%
INSURANCE	1606.1	1615.3	0.57%	17.39%
SERVICES	906.0	908.3	0.26%	5.17%
INDUSTRY	7822.9	8103.1	3.58%	20.24%

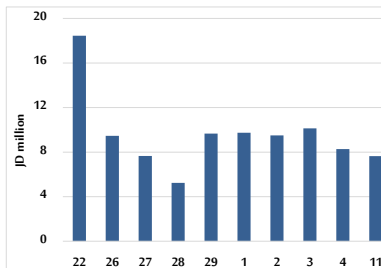
### MARKET INDICES WEIGHTED BY FREE FLOAT MARKET CAP. (2012=1000)

	WEDNESDAY 04/06/2025	WEDNESDAY 11/06/2025	% CHANGE	
			DAY BEFORE	YTD
FIRST MARKET	1501.0	1508.3	0.49%	8.07%
SECOND MARKET	874.8	874.1	-0.08%	4.99%

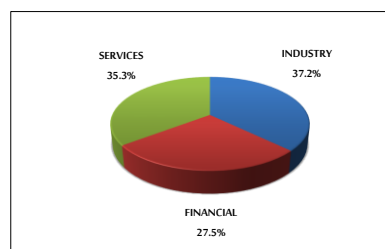
### MARKET CAPITALIZATION (JD)

	19,627,608,179	19,916,434,157	1.47%	12.80%
--	----------------	----------------	-------	--------

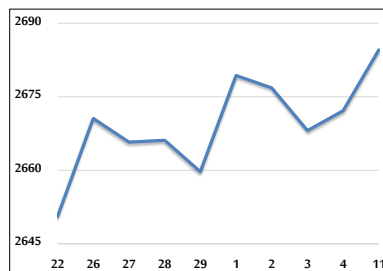
### VALUE TRADED FROM 22/5 TO 11/6/2025



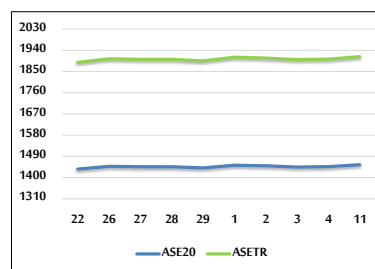
### VALUE TRADED BY SECTOR WEDNESDAY 11/6/2025



### ASE GENERAL FREE FLOAT WEIGHTED INDEX FROM 22/5 TO 11/6/2025



### ASE20 INDEX & ASETR INDEX FROM 22/5 TO 11/6/2025



### ASE WEIGHTED INDEX FROM 22/5 TO 11/6/2025

