

Daily Summary for Amman Stock Exchange

VALUE TRADED (JD)

	2024	2025	NET CHANGE	CHANGE (%)
Daily	4,928,261	6,489,307	1,561,046	31.68%
Cumulative (1/6-22/6)	53,514,929	91,848,405	38,333,476	71.63%
Cumulative (2/1-22/6)	610,291,447	779,364,321	169,072,874	27.70%

NO. OF SHARES TRADED

	2024	2025	NET CHANGE	CHANGE (%)
Daily	6,074,338	2,556,333	-3,518,005	-57.92%
Cumulative (1/6-22/6)	40,680,658	36,743,518	-3,937,140	-9.68%
Cumulative (2/1-22/6)	417,217,217	396,276,853	-20,940,364	-5.02%

NO. OF TRANSACTIONS

	2024	2025	NET CHANGE	CHANGE (%)
Daily	2,158	1,802	-356	-16.50%
Cumulative (1/6-22/6)	28,357	30,413	2,056	7.25%
Cumulative (2/1-22/6)	270,917	259,012	-11,905	-4.39%

SOME FINANCIAL RATIOS FOR THE ASE (22/6/2025)

SECTOR	P/E	P/BV	DIVIDEND YIELD (%)	TURNOVER (%)
FINANCIAL	7.512	0.777	6.505	0.034
SERVICES	12.989	1.150	6.196	0.079
INDUSTRY	11.226	1.829	6.676	0.021
OVERALL	8.751	1.068	6.855	0.041

ASE GENERAL FREE FLOAT WEIGHTED INDEX ASEGI (1999=1000)

	THURSDAY 19/06/2025	SUNDAY 22/06/2025	% CHANGE	
			DAY BEFORE	YTD
GENERAL INDEX ASEGI	2646.7	2640.5	-0.23%	6.10%
FINANCIAL	2776.6	2766.6	-0.36%	4.36%
SERVICES	1735.7	1732.7	-0.17%	2.33%
INDUSTRY	6345.4	6355.7	0.16%	14.90%

ASE FREE FLOAT WEIGHTED INDEX ASE20 (2014=1000)

	1433.8	1430.9	-0.20%	6.47%
--	--------	--------	--------	-------

TOTAL RETURN INDEX ASETR (2021=1074)

	1885.6	1881.8	-0.20%	14.64%
--	--------	--------	--------	--------

ASE WEIGHTED INDEX (1991=1000)

	THURSDAY 19/06/2025	SUNDAY 22/06/2025	% CHANGE	
			DAY BEFORE	YTD
GENERAL	5186.7	5184.2	-0.05%	11.88%
BANKS	7143.1	7103.3	-0.56%	8.39%
INSURANCE	1607.1	1607.1	0.00%	16.79%
SERVICES	896.8	896.4	-0.05%	3.79%
INDUSTRY	7895.8	7935.2	0.50%	17.75%

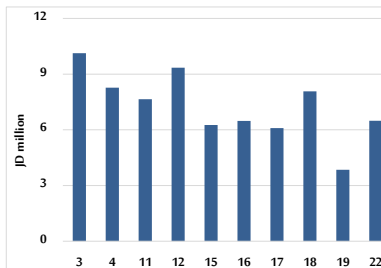
MARKET INDICES WEIGHTED BY FREE FLOAT MARKET CAP. (2012=1000)

	THURSDAY 19/06/2025	SUNDAY 22/06/2025	% CHANGE	
			DAY BEFORE	YTD
FIRST MARKET	1487.7	1484.4	-0.22%	6.36%
SECOND MARKET	853.1	849.2	-0.45%	2.00%

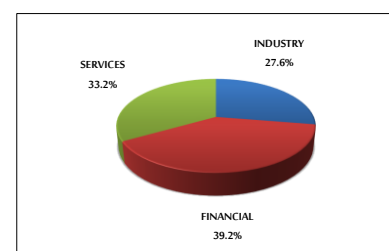
MARKET CAPITALIZATION (JD)

	19,533,984,141	19,524,390,995	-0.05%	10.58%
--	----------------	----------------	--------	--------

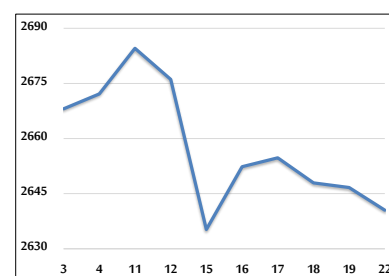
VALUE TRADED FROM 3/6 TO 22/6/2025



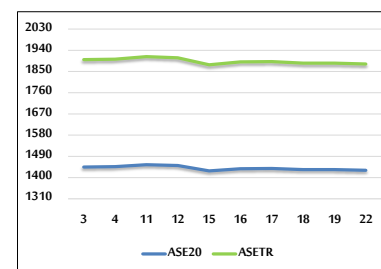
VALUE TRADED BY SECTOR SUNDAY 22/6/2025



ASE GENERAL FREE FLOAT WEIGHTED INDEX FROM 3/6 TO 22/6/2025



ASE20 INDEX & ASETR INDEX FROM 3/6 TO 22/6/2025



ASE WEIGHTED INDEX FROM 3/6 TO 22/6/2025

