

Daily Summary for Amman Stock Exchange

VALUE TRADED (JD)

	2024	2025	NET CHANGE	CHANGE (%)
Daily	2,866,210	6,451,829	3,585,619	125.10%
Cumulative (4/5-13/5)	25,896,590	81,796,775	55,900,185	215.86%
Cumulative (2/1-13/5)	407,821,006	586,466,853	178,645,847	43.80%

NO. OF SHARES TRADED

	2024	2025	NET CHANGE	CHANGE (%)
Daily	1,987,776	3,373,190	1,385,414	69.70%
Cumulative (4/5-13/5)	17,295,668	41,790,034	24,494,366	141.62%
Cumulative (2/1-13/5)	310,500,778	307,423,172	-3,077,606	-0.99%

NO. OF TRANSACTIONS

	2024	2025	NET CHANGE	CHANGE (%)
Daily	1,895	2,746	851	44.91%
Cumulative (4/5-13/5)	16,367	23,991	7,624	46.58%
Cumulative (2/1-13/5)	209,790	192,708	-17,082	-8.14%

SOME FINANCIAL RATIOS FOR THE ASE (13/5/2025)

SECTOR	P/E	P/BV	DIVIDEND YIELD (%)	TURNOVER (%)
FINANCIAL	7.159	0.742	6.767	0.041
SERVICES	12.664	1.132	6.148	0.102
INDUSTRY	10.233	1.668	7.324	0.053
OVERALL	8.236	1.004	7.284	0.055

ASE GENERAL FREE FLOAT WEIGHTED INDEX ASEGI (1999=1000)

	MONDAY 12/05/2025	TUESDAY 13/05/2025	% CHANGE	
			DAY BEFORE	YTD
GENERAL INDEX ASEGI	2554.4	2564.5	0.40%	3.04%
FINANCIAL	2676.6	2687.2	0.40%	1.37%
SERVICES	1730.3	1738.9	0.50%	2.69%
INDUSTRY	5919.2	5927.6	0.14%	7.16%

ASE FREE FLOAT WEIGHTED INDEX ASE20 (2014=1000)

	1380.7	1386.0	0.38%	3.12%
--	--------	--------	-------	-------

TOTAL RETURN INDEX ASETR (2021=1074)

	1815.8	1822.7	0.38%	11.04%
--	--------	--------	-------	--------

ASE WEIGHTED INDEX (1991=1000)

	MONDAY 12/05/2025	TUESDAY 13/05/2025	% CHANGE	
			DAY BEFORE	YTD
GENERAL	4858.4	4876.5	0.37%	5.24%
BANKS	6740.7	6768.9	0.42%	3.29%
INSURANCE	1479.0	1479.5	0.04%	7.52%
SERVICES	878.7	883.9	0.59%	2.34%
INDUSTRY	7262.6	7281.8	0.26%	8.05%

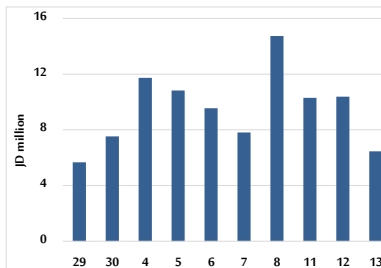
MARKET INDICES WEIGHTED BY FREE FLOAT MARKET CAP. (2012=1000)

	MONDAY 12/05/2025	TUESDAY 13/05/2025	% CHANGE	
			DAY BEFORE	YTD
FIRST MARKET	1434.2	1439.1	0.34%	3.11%
SECOND MARKET	849.3	856.5	0.85%	2.87%

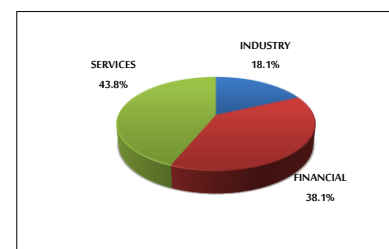
MARKET CAPITALIZATION (JD)

	18,339,872,693	18,403,815,853	0.35%	4.24%
--	----------------	----------------	-------	-------

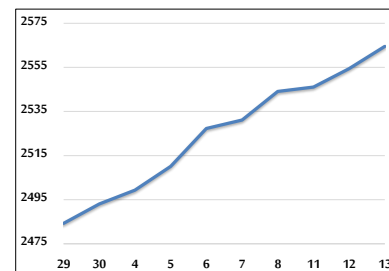
VALUE TRADED FROM 29/4 TO 13/5/2025



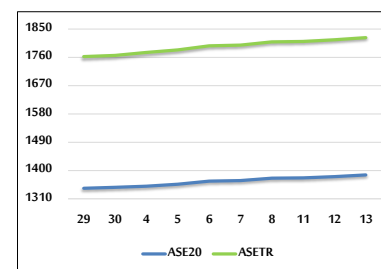
VALUE TRADED BY SECTOR TUESDAY 13/5/2025



ASE GENERAL FREE FLOAT WEIGHTED INDEX FROM 29/4 TO 13/5/2025



ASE20 INDEX & ASETR INDEX FROM 29/4 TO 13/5/2025



ASE WEIGHTED INDEX FROM 29/4 TO 13/5/2025

