

## Daily Summary for Amman Stock Exchange

### VALUE TRADED (JD)

	2024	2025	NET CHANGE	CHANGE (%)
Daily	2,245,147	7,811,303	5,566,156	247.92%
Cumulative (4/5-7/5)	13,895,046	39,927,136	26,032,090	187.35%
Cumulative (2/1-7/5)	395,819,462	544,597,214	148,777,752	37.59%

### NO. OF SHARES TRADED

	2024	2025	NET CHANGE	CHANGE (%)
Daily	1,336,043	4,177,935	2,841,892	212.71%
Cumulative (4/5-7/5)	8,602,598	18,087,417	9,484,819	110.26%
Cumulative (2/1-7/5)	301,807,708	283,720,555	-18,087,153	-5.99%

### NO. OF TRANSACTIONS

	2024	2025	NET CHANGE	CHANGE (%)
Daily	1,690	2,711	1,021	60.41%
Cumulative (4/5-7/5)	8,127	12,509	4,382	53.92%
Cumulative (2/1-7/5)	201,550	181,226	-20,324	-10.08%

### SOME FINANCIAL RATIOS FOR THE ASE (7/5/2025)

SECTOR	P/E	P/BV	DIVIDEND YIELD (%)	TURNOVER (%)
FINANCIAL	7.083	0.734	6.840	0.053
SERVICES	12.586	1.125	6.186	0.118
INDUSTRY	10.056	1.639	7.453	0.073
OVERALL	8.127	0.991	7.382	0.069

### ASE GENERAL FREE FLOAT WEIGHTED INDEX ASEGI (1999=1000)

	TUESDAY 06/05/2025	WEDNESDAY 07/05/2025	% CHANGE	
			DAY BEFORE	YTD
GENERAL INDEX ASEGI	2527.3	2531.1	0.15%	1.70%
FINANCIAL	2647.2	2658.0	0.41%	0.26%
SERVICES	1720.8	1718.2	-0.15%	1.47%
INDUSTRY	5844.7	5833.2	-0.20%	5.46%

### ASE FREE FLOAT WEIGHTED INDEX ASE20 (2014=1000)

	1366.0	1367.9	0.14%	1.78%
--	--------	--------	-------	-------

### TOTAL RETURN INDEX ASETR (2021=1074)

	1796.4	1799.0	0.14%	9.59%
--	--------	--------	-------	-------

### ASE WEIGHTED INDEX (1991=1000)

	TUESDAY 06/05/2025	WEDNESDAY 07/05/2025	% CHANGE	
			DAY BEFORE	YTD
GENERAL	4799.1	4811.5	0.26%	3.84%
BANKS	6637.2	6700.0	0.95%	2.24%
INSURANCE	1488.1	1469.5	-1.25%	6.79%
SERVICES	874.7	873.2	-0.17%	1.10%
INDUSTRY	7183.2	7159.2	-0.33%	6.23%

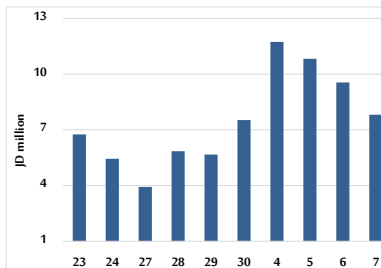
### MARKET INDICES WEIGHTED BY FREE FLOAT MARKET CAP. (2012=1000)

	TUESDAY 06/05/2025	WEDNESDAY 07/05/2025	% CHANGE	
			DAY BEFORE	YTD
FIRST MARKET	1420.3	1421.9	0.12%	1.88%
SECOND MARKET	824.4	830.5	0.75%	-0.25%

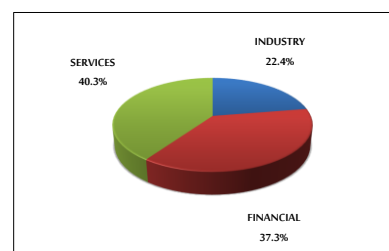
### MARKET CAPITALIZATION (JD)

	18,131,090,994	18,175,970,233	0.25%	2.95%
--	----------------	----------------	-------	-------

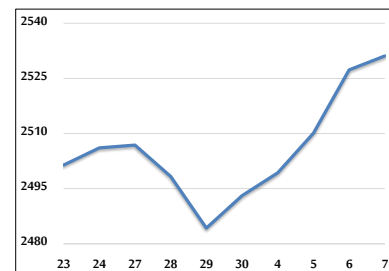
### VALUE TRADED FROM 23/4 TO 7/5/2025



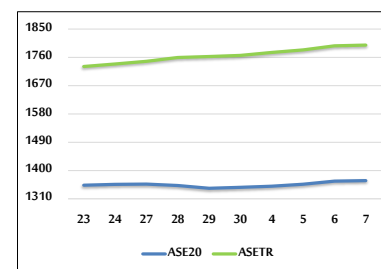
### VALUE TRADED BY SECTOR WEDNESDAY 7/5/2025



### ASE GENERAL FREE FLOAT WEIGHTED INDEX FROM 23/4 TO 7/5/2025



### ASE20 INDEX & ASETR INDEX FROM 23/4 TO 7/5/2025



### ASE WEIGHTED INDEX FROM 23/4 TO 7/5/2025

