

Daily Summary for Amman Stock Exchange

VALUE TRADED (JD)

	2024	2025	NET CHANGE	CHANGE (%)
Daily	98,061,470	5,236,061	-92,825,409	-94.66%
Cumulative (4/5-28/5)	160,885,644	173,178,193	12,292,549	7.64%
Cumulative (2/1-28/5)	542,810,060	677,848,271	135,038,211	24.88%

NO. OF SHARES TRADED

	2024	2025	NET CHANGE	CHANGE (%)
Daily	23,676,247	2,835,033	-20,841,214	-88.03%
Cumulative (4/5-28/5)	71,111,085	89,344,109	18,233,024	25.64%
Cumulative (2/1-28/5)	364,316,195	354,977,247	-9,338,948	-2.56%

NO. OF TRANSACTIONS

	2024	2025	NET CHANGE	CHANGE (%)
Daily	2,072	2,381	309	14.91%
Cumulative (4/5-28/5)	41,847	56,721	14,874	35.54%
Cumulative (2/1-28/5)	235,270	225,438	-9,832	-4.18%

SOME FINANCIAL RATIOS FOR THE ASE (28/5/2025)

SECTOR	P/E	P/BV	DIVIDEND YIELD (%)	TURNOVER (%)
FINANCIAL	7.643	0.791	6.345	0.032
SERVICES	12.871	1.151	6.049	0.067
INDUSTRY	10.922	1.780	6.862	0.090
OVERALL	8.747	1.068	6.858	0.047

ASE GENERAL FREE FLOAT WEIGHTED INDEX ASEGI (1999=1000)

	TUESDAY 27/05/2025	WEDNESDAY 28/05/2025	% CHANGE	
			DAY BEFORE	YTD
GENERAL INDEX ASEGI	2665.8	2666.1	0.01%	7.13%
FINANCIAL	2811.6	2808.5	-0.11%	5.94%
SERVICES	1763.7	1755.7	-0.45%	3.69%
INDUSTRY	6200.9	6246.8	0.74%	12.93%

ASE FREE FLOAT WEIGHTED INDEX ASE20 (2014=1000)

	1445.8	1446.0	0.02%	7.59%
--	--------	--------	-------	-------

TOTAL RETURN INDEX ASETR (2021=1074)

	1901.3	1901.6	0.02%	15.84%
--	--------	--------	-------	--------

ASE WEIGHTED INDEX (1991=1000)

	TUESDAY 27/05/2025	WEDNESDAY 28/05/2025	% CHANGE	
			DAY BEFORE	YTD
GENERAL	5170.5	5181.9	0.22%	11.83%
BANKS	7259.5	7248.3	-0.15%	10.61%
INSURANCE	1553.5	1566.1	0.81%	13.81%
SERVICES	911.0	907.8	-0.34%	5.12%
INDUSTRY	7676.3	7735.5	0.77%	14.79%

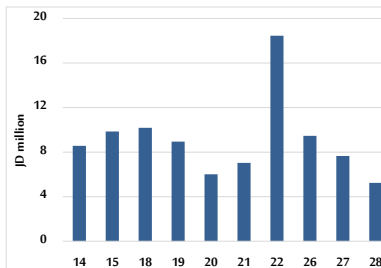
MARKET INDICES WEIGHTED BY FREE FLOAT MARKET CAP. (2012=1000)

	TUESDAY 27/05/2025	WEDNESDAY 28/05/2025	% CHANGE	
			DAY BEFORE	YTD
FIRST MARKET	1498.3	1499.0	0.05%	7.41%
SECOND MARKET	869.4	862.7	-0.76%	3.62%

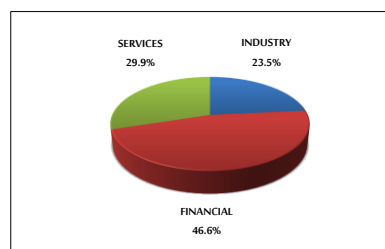
MARKET CAPITALIZATION (JD)

	19,457,840,616	19,489,821,312	0.16%	10.39%
--	----------------	----------------	-------	--------

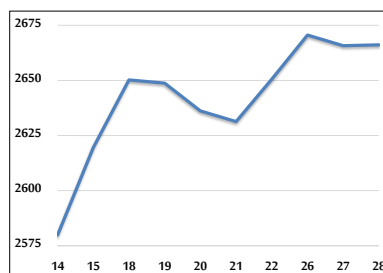
VALUE TRADED FROM 14/5 TO 28/5/2025



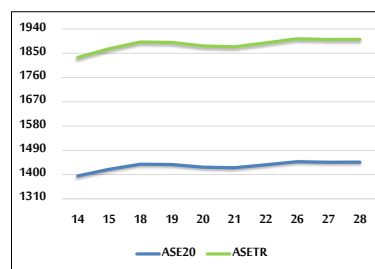
VALUE TRADED BY SECTOR WEDNESDAY 28/5/2025



ASE GENERAL FREE FLOAT WEIGHTED INDEX FROM 14/5 TO 28/5/2025



ASE20 INDEX & ASETR INDEX FROM 14/5 TO 28/5/2025



ASE WEIGHTED INDEX FROM 14/5 TO 28/5/2025

