

## Daily Summary for Amman Stock Exchange

### VALUE TRADED (JD)

	2024	2025	NET CHANGE	CHANGE (%)
Daily	3,448,037	9,462,611	6,014,574	174.43%
Cumulative (4/5-26/5)	58,938,472	160,284,893	101,346,421	171.95%
Cumulative (2/1-26/5)	440,862,888	664,954,971	224,092,083	50.83%

### NO. OF SHARES TRADED

	2024	2025	NET CHANGE	CHANGE (%)
Daily	2,648,923	3,780,401	1,131,478	42.71%
Cumulative (4/5-26/5)	43,940,699	81,784,988	37,844,289	86.13%
Cumulative (2/1-26/5)	337,145,809	347,418,126	10,272,317	3.05%

### NO. OF TRANSACTIONS

	2024	2025	NET CHANGE	CHANGE (%)
Daily	2,383	3,457	1,074	45.07%
Cumulative (4/5-26/5)	37,269	51,144	13,875	37.23%
Cumulative (2/1-26/5)	230,692	219,861	-10,831	-4.70%

### SOME FINANCIAL RATIOS FOR THE ASE (26/5/2025)

SECTOR	P/E	P/BV	DIVIDEND YIELD (%)	TURNOVER (%)
FINANCIAL	7.672	0.794	6.320	0.060
SERVICES	12.895	1.153	6.038	0.074
INDUSTRY	10.993	1.792	6.817	0.056
OVERALL	8.787	1.073	6.827	0.062

### ASE GENERAL FREE FLOAT WEIGHTED INDEX ASEGI (1999=1000)

	THURSDAY 22/05/2025	MONDAY 26/05/2025	% CHANGE	
			DAY BEFORE	YTD
GENERAL INDEX ASEGI	2650.6	2670.6	0.76%	7.31%
FINANCIAL	2787.9	2814.4	0.95%	6.16%
SERVICES	1767.5	1758.2	-0.53%	3.83%
INDUSTRY	6162.2	6266.1	1.69%	13.28%

### ASE FREE FLOAT WEIGHTED INDEX ASE20 (2014=1000)

	1436.2	1447.7	0.80%	7.71%
--	--------	--------	-------	-------

### TOTAL RETURN INDEX ASETR (2021=1074)

	1888.7	1903.9	0.80%	15.98%
--	--------	--------	-------	--------

### ASE WEIGHTED INDEX (1991=1000)

	THURSDAY 22/05/2025	MONDAY 26/05/2025	% CHANGE	
			DAY BEFORE	YTD
GENERAL	5101.1	5205.6	2.05%	12.34%
BANKS	7105.3	7278.5	2.44%	11.07%
INSURANCE	1578.4	1554.9	-1.49%	13.00%
SERVICES	909.7	908.6	-0.11%	5.21%
INDUSTRY	7611.1	7783.4	2.26%	15.50%

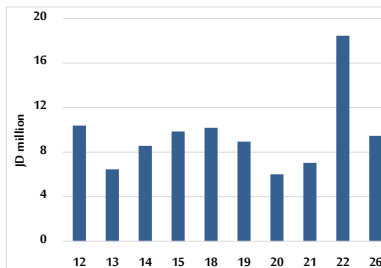
### MARKET INDICES WEIGHTED BY FREE FLOAT MARKET CAP. (2012=1000)

	THURSDAY 22/05/2025	MONDAY 26/05/2025	% CHANGE	
			DAY BEFORE	YTD
FIRST MARKET	1489.0	1500.5	0.77%	7.51%
SECOND MARKET	876.0	878.0	0.22%	5.45%

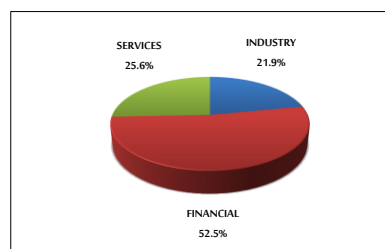
### MARKET CAPITALIZATION (JD)

	19,217,436,326	19,581,898,392	1.90%	10.91%
--	----------------	----------------	-------	--------

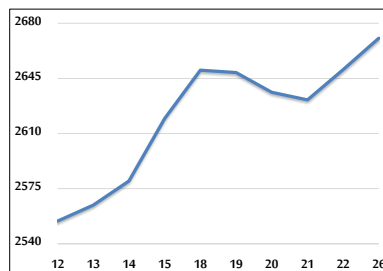
### VALUE TRADED FROM 12/5 TO 26/5/2025



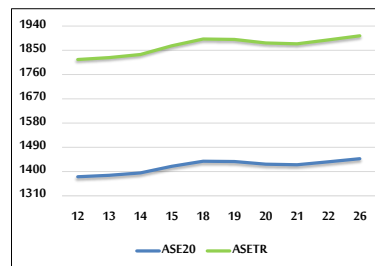
### VALUE TRADED BY SECTOR MONDAY 26/5/2025



### ASE GENERAL FREE FLOAT WEIGHTED INDEX FROM 12/5 TO 26/5/2025



### ASE20 INDEX & ASETR INDEX FROM 12/5 TO 26/5/2025



### ASE WEIGHTED INDEX FROM 12/5 TO 26/5/2025

