

Daily Summary for Amman Stock Exchange

VALUE TRADED (JD)

	2024	2025	NET CHANGE	CHANGE (%)
Daily	4,197,168	18,440,213	14,243,045	339.35%
Cumulative (4/5-22/5)	55,490,435	150,822,282	95,331,847	171.80%
Cumulative (2/1-22/5)	437,414,851	655,492,360	218,077,509	49.86%

NO. OF SHARES TRADED

	2024	2025	NET CHANGE	CHANGE (%)
Daily	3,114,933	10,500,433	7,385,500	237.10%
Cumulative (4/5-22/5)	41,291,776	78,004,587	36,712,811	88.91%
Cumulative (2/1-22/5)	334,496,886	343,637,725	9,140,839	2.73%

NO. OF TRANSACTIONS

	2024	2025	NET CHANGE	CHANGE (%)
Daily	2,637	3,018	381	14.45%
Cumulative (4/5-22/5)	34,886	47,687	12,801	36.69%
Cumulative (2/1-22/5)	228,309	216,404	-11,905	-5.21%

SOME FINANCIAL RATIOS FOR THE ASE (22/5/2025)

SECTOR	P/E	P/BV	DIVIDEND YIELD (%)	TURNOVER (%)
FINANCIAL	7.496	0.778	6.463	0.184
SERVICES	12.919	1.155	6.026	0.077
INDUSTRY	10.739	1.750	6.979	0.276
OVERALL	8.611	1.051	6.967	0.173

ASE GENERAL FREE FLOAT WEIGHTED INDEX ASEGI (1999=1000)

	WEDNESDAY 21/05/2025	THURSDAY 22/05/2025	% CHANGE	
			DAY BEFORE	YTD
GENERAL INDEX ASEGI	2631.3	2650.6	0.73%	6.50%
FINANCIAL	2789.4	2787.9	-0.05%	5.16%
SERVICES	1749.4	1767.5	1.03%	4.38%
INDUSTRY	5996.0	6162.2	2.77%	11.41%

ASE FREE FLOAT WEIGHTED INDEX ASE20 (2014=1000)

	1425.1	1436.2	0.78%	6.86%
--	--------	--------	-------	-------

TOTAL RETURN INDEX ASETR (2021=1074)

	1874.2	1888.7	0.78%	15.06%
--	--------	--------	-------	--------

ASE WEIGHTED INDEX (1991=1000)

	WEDNESDAY 21/05/2025	THURSDAY 22/05/2025	% CHANGE	
			DAY BEFORE	YTD
GENERAL	5017.4	5101.1	1.67%	10.09%
BANKS	7107.5	7105.3	-0.03%	8.42%
INSURANCE	1562.6	1578.4	1.01%	14.71%
SERVICES	898.8	909.7	1.20%	5.33%
INDUSTRY	7336.4	7611.1	3.74%	12.94%

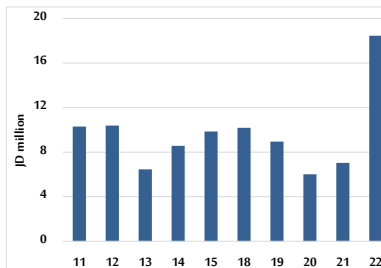
MARKET INDICES WEIGHTED BY FREE FLOAT MARKET CAP. (2012=1000)

	WEDNESDAY 21/05/2025	THURSDAY 22/05/2025	% CHANGE	
			DAY BEFORE	YTD
FIRST MARKET	1477.9	1489.0	0.75%	6.69%
SECOND MARKET	870.1	876.0	0.68%	5.22%

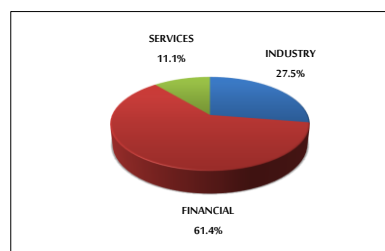
MARKET CAPITALIZATION (JD)

	18,919,873,131	19,217,436,326	1.57%	8.84%
--	----------------	----------------	-------	-------

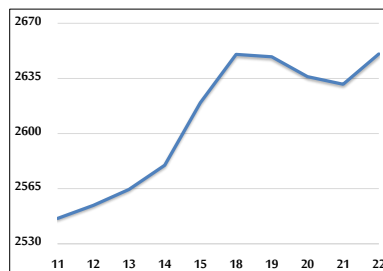
VALUE TRADED FROM 11/5 TO 22/5/2025



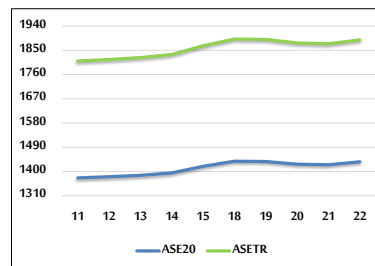
VALUE TRADED BY SECTOR THURSDAY 22/5/2025



ASE GENERAL FREE FLOAT WEIGHTED INDEX FROM 11/5 TO 22/5/2025



ASE20 INDEX & ASETR INDEX FROM 11/5 TO 22/5/2025



ASE WEIGHTED INDEX FROM 11/5 TO 22/5/2025

