

Daily Summary for Amman Stock Exchange

VALUE TRADED (JD)

	2024	2025	NET CHANGE	CHANGE (%)
Daily	7,961,864	8,611,918	650,054	8.16%
Cumulative (3/4-16/4)	42,119,154	74,842,612	32,723,458	77.69%
Cumulative (2/1-16/4)	327,492,862	440,087,910	112,595,048	34.38%

NO. OF SHARES TRADED

	2024	2025	NET CHANGE	CHANGE (%)
Daily	6,155,214	3,283,359	-2,871,855	-46.66%
Cumulative (3/4-16/4)	29,937,103	34,923,189	4,986,086	16.66%
Cumulative (2/1-16/4)	260,627,985	230,833,088	-29,794,897	-11.43%

NO. OF TRANSACTIONS

	2024	2025	NET CHANGE	CHANGE (%)
Daily	2,856	2,235	-621	-21.74%
Cumulative (3/4-16/4)	20,497	22,025	1,528	7.45%
Cumulative (2/1-16/4)	170,230	147,176	-23,054	-13.54%

SOME FINANCIAL RATIOS FOR THE ASE (16/4/2025)

SECTOR	P/E	P/BV	DIVIDEND YIELD (%)	TURNOVER (%)
FINANCIAL	7.293	0.731	6.821	0.038
SERVICES	12.709	1.159	6.007	0.109
INDUSTRY	10.273	1.623	7.495	0.044
OVERALL	8.290	0.990	7.363	0.053

STOCK PRICE INDEX WEIGHTED BY FREE FLOAT MARKET CAPITALIZATION (1999=1000)

	TUESDAY 15/04/2025	WEDNESDAY 16/04/2025	% CHANGE	
			DAY BEFORE	YTD
GENERAL	2545.4	2540.4	-0.20%	2.07%
FINANCIAL	2650.5	2654.1	0.14%	0.12%
SERVICES	1773.9	1772.1	-0.10%	4.65%
INDUSTRY	5786.9	5711.4	-1.30%	3.26%

STOCK PRICE INDEX WEIGHTED BY FREE FLOAT MARKET CAPITALIZATION ASE20 (2014=1000)

	1379.5	1376.6	-0.21%	2.43%
--	--------	--------	--------	-------

Total Return Index ASETR (2021=1074)

	1745.9	1742.4	-0.21%	6.14%
--	--------	--------	--------	-------

STOCK PRICE INDEX WEIGHTED BY MARKET CAPITALIZATION (1991=1000)

	TUESDAY 15/04/2025	WEDNESDAY 16/04/2025	% CHANGE	
			DAY BEFORE	YTD
GENERAL	4838.7	4811.2	-0.57%	3.83%
BANKS	6677.4	6689.8	0.19%	2.08%
INSURANCE	1450.7	1453.4	0.19%	5.62%
SERVICES	883.2	881.2	-0.22%	2.04%
INDUSTRY	7266.5	7157.1	-1.51%	6.20%

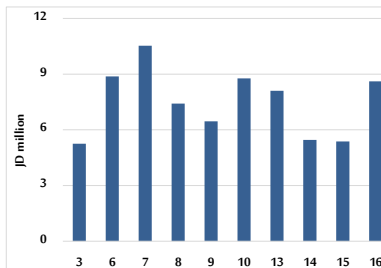
STOCK PRICE MARKET INDEX WEIGHTED BY FREE FLOAT MARKET CAP. (2012=1000)

	TUESDAY 15/04/2025	WEDNESDAY 16/04/2025	% CHANGE	
			DAY BEFORE	YTD
FIRST MARKET	1433.6	1431.0	-0.19%	2.53%
SECOND MARKET	788.3	788.9	0.08%	-5.24%

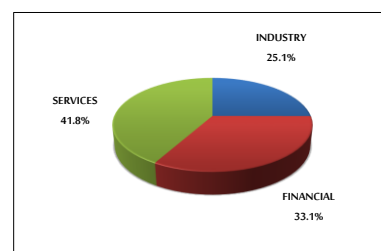
MARKET CAPITALIZATION (JD)

	18,279,657,923	18,184,707,765	-0.52%	3.00%
--	----------------	----------------	--------	-------

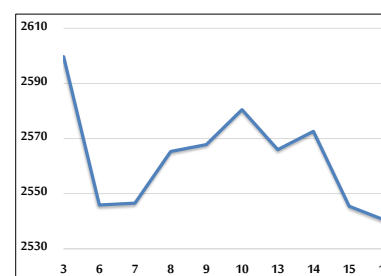
VALUE TRADED FROM 3/4 TO 16/4/2025



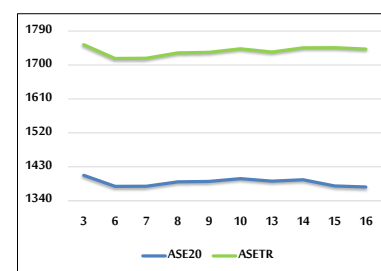
VALUE TRADED BY SECTOR WEDNESDAY 16/4/2025



GENERAL FREE FLOAT PRICE INDEX FROM 3/4 TO 16/4/2025



ASE20 and ASETR FREE FLOAT PRICE INDEX FROM 3/4 TO 16/4/2025



STOCK PRICE INDEX FROM 3/4 TO 16/4/2025

