

Daily Summary for Amman Stock Exchange

VALUE TRADED (JD)

	2024	2025	NET CHANGE	CHANGE (%)
Daily	2,491,764	3,250,044	758,280	30.43%
Cumulative (2/3-16/3)	45,517,309	52,721,211	7,203,902	15.83%
Cumulative (2/1-16/3)	251,097,517	307,731,033	56,633,516	22.55%

NO. OF SHARES TRADED

	2024	2025	NET CHANGE	CHANGE (%)
Daily	1,442,172	1,997,725	555,553	38.52%
Cumulative (2/3-16/3)	34,628,932	29,453,614	-5,175,318	-14.95%
Cumulative (2/1-16/3)	205,079,979	166,889,564	-38,190,415	-18.62%

NO. OF TRANSACTIONS

	2024	2025	NET CHANGE	CHANGE (%)
Daily	1,784	1,170	-614	-34.42%
Cumulative (2/3-16/3)	24,550	17,310	-7,240	-29.49%
Cumulative (2/1-16/3)	132,246	106,663	-25,583	-19.35%

SOME FINANCIAL RATIOS FOR THE ASE (16/3/2025)

SECTOR	P/E	P/BV	DIVIDEND YIELD (%)	TURNOVER (%)
FINANCIAL	7.633	0.762	5.753	0.030
SERVICES	12.474	1.330	5.371	0.047
INDUSTRY	10.534	1.752	6.436	0.018
OVERALL	8.546	1.053	6.259	0.032

STOCK PRICE INDEX WEIGHTED BY FREE FLOAT MARKET CAPITALIZATION (1999=1000)

	THURSDAY 13/03/2025	SUNDAY 16/03/2025	% CHANGE	
			DAY BEFORE	YTD
GENERAL	2614.6	2616.1	0.05%	5.12%
FINANCIAL	2742.7	2743.5	0.03%	3.49%
SERVICES	1802.7	1802.2	-0.02%	6.43%
INDUSTRY	5839.9	5849.9	0.17%	5.76%

STOCK PRICE INDEX WEIGHTED BY FREE FLOAT MARKET CAPITALIZATION ASE20 (2014=1000)

	1417.3	1418.2	0.06%	5.52%
--	--------	--------	-------	-------

Total Return Index ASETR (2021=1074)

	1731.1	1732.1	0.06%	5.52%
--	--------	--------	-------	-------

STOCK PRICE INDEX WEIGHTED BY MARKET CAPITALIZATION (1991=1000)

	THURSDAY 13/03/2025	SUNDAY 16/03/2025	% CHANGE	
			DAY BEFORE	YTD
GENERAL	4962.0	4972.0	0.20%	7.30%
BANKS	6995.0	7003.7	0.12%	6.87%
INSURANCE	1450.7	1442.8	-0.55%	4.85%
SERVICES	897.5	897.1	-0.04%	3.87%
INDUSTRY	7299.1	7324.9	0.35%	8.69%

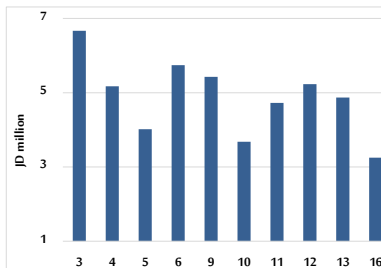
STOCK PRICE MARKET INDEX WEIGHTED BY FREE FLOAT MARKET CAP. (2012=1000)

	THURSDAY 13/03/2025	SUNDAY 16/03/2025	% CHANGE	
			DAY BEFORE	YTD
FIRST MARKET	1472.3	1473.6	0.09%	5.59%
SECOND MARKET	811.4	806.9	-0.55%	-3.08%

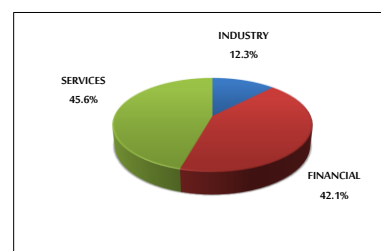
MARKET CAPITALIZATION (JD)

	18,771,703,425	18,811,354,007	0.21%	6.54%
--	----------------	----------------	-------	-------

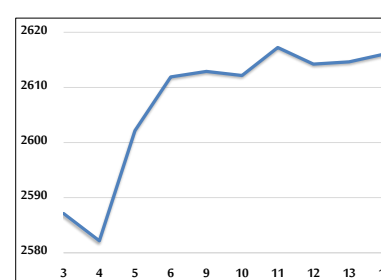
VALUE TRADED FROM 3/3 TO 16/3/2025



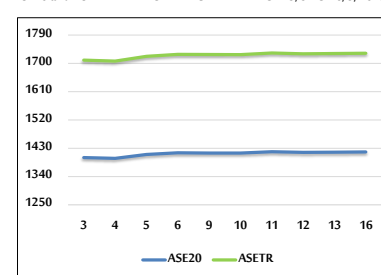
VALUE TRADED BY SECTOR SUNDAY 16/3/2025



GENERAL FREE FLOAT PRICE INDEX FROM 3/3 TO 16/3/2025



ASE20 and ASETR FREE FLOAT PRICE INDEX FROM 3/3 TO 16/3/2025



STOCK PRICE INDEX FROM 3/3 TO 16/3/2025

