

Daily Summary for Amman Stock Exchange

VALUE TRADED (JD)

	2024	2025	NET CHANGE	CHANGE (%)
Daily	2,949,386	9,245,206	6,295,820	213.46%
Cumulative (2/3-24/3)	64,451,150	88,199,912	23,748,762	36.85%
Cumulative (2/1-24/3)	270,031,358	343,209,734	73,178,376	27.10%

NO. OF SHARES TRADED

	2024	2025	NET CHANGE	CHANGE (%)
Daily	2,519,265	4,377,842	1,858,577	73.77%
Cumulative (2/3-24/3)	49,611,892	49,274,248	-337,644	-0.68%
Cumulative (2/1-24/3)	220,062,939	186,710,198	-33,352,741	-15.16%

NO. OF TRANSACTIONS

	2024	2025	NET CHANGE	CHANGE (%)
Daily	1,842	2,740	898	48.75%
Cumulative (2/3-24/3)	34,426	28,803	-5,623	-16.33%
Cumulative (2/1-24/3)	142,122	118,156	-23,966	-16.86%

SOME FINANCIAL RATIOS FOR THE ASE (24/3/2025)

SECTOR	P/E	P/BV	DIVIDEND YIELD (%)	TURNOVER (%)
FINANCIAL	7.613	0.761	5.883	0.068
SERVICES	12.853	1.360	5.741	0.088
INDUSTRY	11.042	1.834	6.098	0.052
OVERALL	8.718	1.074	6.261	0.070

STOCK PRICE INDEX WEIGHTED BY FREE FLOAT MARKET CAPITALIZATION (1999=1000)

	SUNDAY 23/03/2025	MONDAY 24/03/2025	% CHANGE	
			DAY BEFORE	YTD
GENERAL	2623.1	2642.9	0.75%	6.19%
FINANCIAL	2747.3	2740.0	-0.27%	3.36%
SERVICES	1805.5	1817.9	0.68%	7.35%
INDUSTRY	5898.8	6119.6	3.74%	10.64%

STOCK PRICE INDEX WEIGHTED BY FREE FLOAT MARKET CAPITALIZATION ASE20 (2014=1000)

	1422.5	1432.6	0.71%	6.59%
--	--------	--------	-------	-------

Total Return Index ASETR (2021=1074)

	1740.3	1752.7	0.71%	6.77%
--	--------	--------	-------	-------

STOCK PRICE INDEX WEIGHTED BY MARKET CAPITALIZATION (1991=1000)

	SUNDAY 23/03/2025	MONDAY 24/03/2025	% CHANGE	
			DAY BEFORE	YTD
GENERAL	5003.3	5072.3	1.38%	9.47%
BANKS	7037.9	7010.5	-0.39%	6.98%
INSURANCE	1452.0	1448.2	-0.26%	5.24%
SERVICES	895.7	893.2	-0.28%	3.42%
INDUSTRY	7398.8	7683.5	3.85%	14.01%

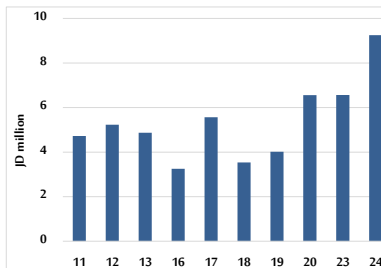
STOCK PRICE MARKET INDEX WEIGHTED BY FREE FLOAT MARKET CAP. (2012=1000)

	SUNDAY 23/03/2025	MONDAY 24/03/2025	% CHANGE	
			DAY BEFORE	YTD
FIRST MARKET	1478.1	1489.3	0.76%	6.71%
SECOND MARKET	803.1	798.2	-0.61%	-4.13%

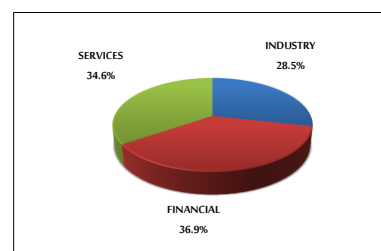
MARKET CAPITALIZATION (JD)

	18,928,204,298	19,171,698,954	1.29%	8.59%
--	----------------	----------------	-------	-------

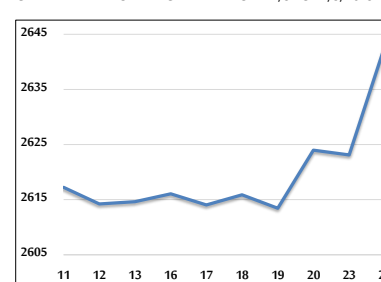
VALUE TRADED FROM 11/3 TO 24/3/2025



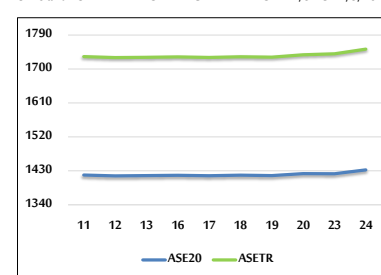
VALUE TRADED BY SECTOR MONDAY 24/3/2025



GENERAL FREE FLOAT PRICE INDEX FROM 11/3 TO 24/3/2025



ASE20 and ASETR FREE FLOAT PRICE INDEX FROM 11/3 TO 24/3/2025



STOCK PRICE INDEX FROM 11/3 TO 24/3/2025

