

### Daily Summary for Amman Stock Exchange

VALUE TRADED (JD)

	2024	2025	NET CHANGE	CHANGE (%)
Daily	4,723,021	7,051,276	2,328,255	49.30%
Cumulative (2/2-12/2)	35,556,168	52,290,989	16,734,821	47.07%
Cumulative (2/1-12/2)	141,798,341	194,004,636	52,206,295	36.82%

NO. OF SHARES TRADED

	2024	2025	NET CHANGE	CHANGE (%)
Daily	5,148,035	4,793,219	-354,816	-6.89%
Cumulative (2/2-12/2)	26,986,138	28,226,714	1,240,576	4.60%
Cumulative (2/1-12/2)	120,119,129	102,639,240	-17,479,889	-14.55%

NO. OF TRANSACTIONS

	2024	2025	NET CHANGE	CHANGE (%)
Daily	2,876	1,872	-1,004	-34.91%
Cumulative (2/2-12/2)	18,970	19,683	713	3.76%
Cumulative (2/1-12/2)	78,442	67,223	-11,219	-14.30%

SOME FINANCIAL RATIOS FOR THE ASE (12/2/2025)

SECTOR	P/E	P/BV	DIVIDEND YIELD (%)	TURNOVER (%)
FINANCIAL	7.466	0.765	6.140	0.065
SERVICES	12.949	1.314	5.874	0.138
INDUSTRY	10.754	1.785	6.313	0.041
OVERALL	8.514	1.064	6.456	0.077

STOCK PRICE INDEX WEIGHTED BY FREE FLOAT MARKET CAPITALIZATION (1999=1000)

	TUESDAY 11/02/2025	WEDNESDAY 12/02/2025	% CHANGE	
			DAY BEFORE	YTD
GENERAL	2593.1	2585.3	-0.30%	3.88%
FINANCIAL	2729.3	2720.3	-0.33%	2.61%
SERVICES	1754.8	1750.9	-0.23%	3.40%
INDUSTRY	5932.9	5914.7	-0.31%	6.93%

STOCK PRICE INDEX WEIGHTED BY FREE FLOAT MARKET CAPITALIZATION ASE20 (2014=1000)

	1406.5	1401.3	-0.37%	4.26%
--	--------	--------	--------	-------

Total Return Index ASETR (2021=1074)

	1717.8	1711.5	-0.37%	4.26%
--	--------	--------	--------	-------

STOCK PRICE INDEX WEIGHTED BY MARKET CAPITALIZATION (1991=1000)

	TUESDAY 11/02/2025	WEDNESDAY 12/02/2025	% CHANGE	
			DAY BEFORE	YTD
GENERAL	4964.2	4944.9	-0.39%	6.72%
BANKS	6893.4	6870.6	-0.33%	4.84%
INSURANCE	1374.6	1375.4	0.06%	-0.05%
SERVICES	886.2	884.7	-0.17%	2.44%
INDUSTRY	7462.5	7424.1	-0.51%	10.17%

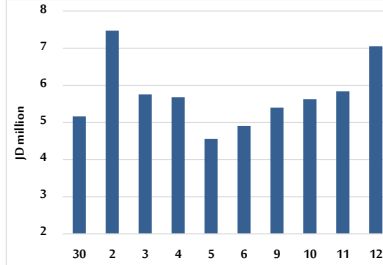
STOCK PRICE MARKET INDEX WEIGHTED BY FREE FLOAT MARKET CAP. (2012=1000)

	TUESDAY 11/02/2025	WEDNESDAY 12/02/2025	% CHANGE	
			DAY BEFORE	YTD
FIRST MARKET	1460.0	1455.5	-0.30%	4.29%
SECOND MARKET	812.3	810.8	-0.19%	-2.61%

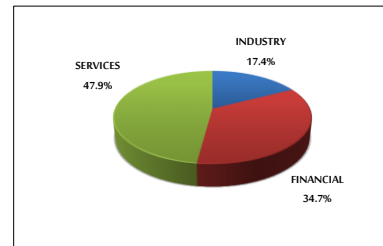
MARKET CAPITALIZATION (JD)

	18,807,966,421	18,737,879,649	-0.37%	6.13%
--	----------------	----------------	--------	-------

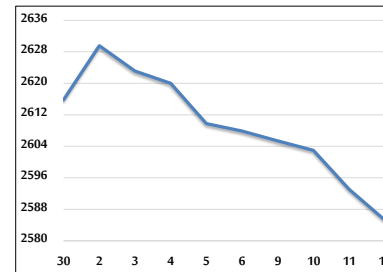
VALUE TRADED FROM 30/1 TO 12/2/2025



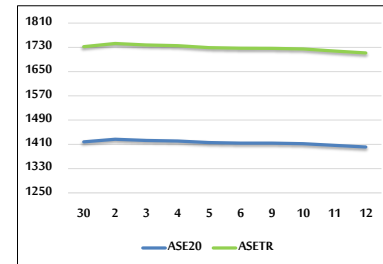
VALUE TRADED BY SECTOR WEDNESDAY 12/2/2025



GENERAL FREE FLOAT PRICE INDEX FROM 30/1 TO 12/2/2025



ASE20 and ASETR FREE FLOAT PRICE INDEX FROM 30/1 TO 12/2/2025



STOCK PRICE INDEX FROM 30/1 TO 12/2/2025

