

## Daily Summary for Amman Stock Exchange

### VALUE TRADED (JD)

	2024	2025	NET CHANGE	CHANGE (%)
Daily	2,995,619	5,437,947	2,442,328	81.53%
Cumulative (2/2-24/2)	82,923,012	92,207,792	9,284,780	11.20%
Cumulative (2/1-24/2)	189,165,185	233,921,439	44,756,254	23.66%

### NO. OF SHARES TRADED

	2024	2025	NET CHANGE	CHANGE (%)
Daily	2,483,907	2,852,128	368,221	14.82%
Cumulative (2/2-24/2)	62,663,568	49,921,660	-12,741,908	-20.33%
Cumulative (2/1-24/2)	155,796,559	124,334,186	-31,462,373	-20.19%

### NO. OF TRANSACTIONS

	2024	2025	NET CHANGE	CHANGE (%)
Daily	1,961	1,843	-118	-6.02%
Cumulative (2/2-24/2)	38,342	35,060	-3,282	-8.56%
Cumulative (2/1-24/2)	97,814	82,600	-15,214	-15.55%

### SOME FINANCIAL RATIOS FOR THE ASE (24/2/2025)

SECTOR	P/E	P/BV	DIVIDEND YIELD (%)	TURNOVER (%)
FINANCIAL	7.626	0.771	6.060	0.043
SERVICES	12.355	1.326	5.793	0.068
INDUSTRY	10.601	1.764	6.393	0.023
OVERALL	8.533	1.063	6.443	0.046

### STOCK PRICE INDEX WEIGHTED BY FREE FLOAT MARKET CAPITALIZATION (1999=1000)

	SUNDAY 23/02/2025	MONDAY 24/02/2025	% CHANGE	
			DAY BEFORE	YTD
GENERAL	2597.9	2592.4	-0.21%	4.16%
FINANCIAL	2735.6	2728.8	-0.25%	2.94%
SERVICES	1769.1	1766.8	-0.13%	4.34%
INDUSTRY	5875.2	5866.8	-0.14%	6.07%

### STOCK PRICE INDEX WEIGHTED BY FREE FLOAT MARKET CAPITALIZATION ASE20 (2014=1000)

	1407.2	1404.8	-0.16%	4.53%
--	--------	--------	--------	-------

### Total Return Index ASETR (2021=1074)

	1718.7	1715.8	-0.16%	4.53%
--	--------	--------	--------	-------

### STOCK PRICE INDEX WEIGHTED BY MARKET CAPITALIZATION (1991=1000)

	SUNDAY 23/02/2025	MONDAY 24/02/2025	% CHANGE	
			DAY BEFORE	YTD
GENERAL	4961.9	4965.2	0.07%	7.16%
BANKS	6964.6	6977.4	0.18%	6.47%
INSURANCE	1413.2	1409.9	-0.23%	2.46%
SERVICES	895.8	893.3	-0.28%	3.43%
INDUSTRY	7341.8	7343.7	0.03%	8.97%

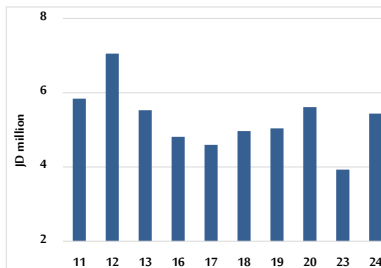
### STOCK PRICE MARKET INDEX WEIGHTED BY FREE FLOAT MARKET CAP. (2012=1000)

	SUNDAY 23/02/2025	MONDAY 24/02/2025	% CHANGE	
			DAY BEFORE	YTD
FIRST MARKET	1461.8	1459.3	-0.16%	4.56%
SECOND MARKET	818.7	809.3	-1.15%	-2.79%

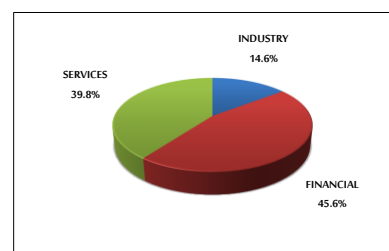
### MARKET CAPITALIZATION (JD)

	18,793,340,414	18,805,150,827	0.06%	6.51%
--	----------------	----------------	-------	-------

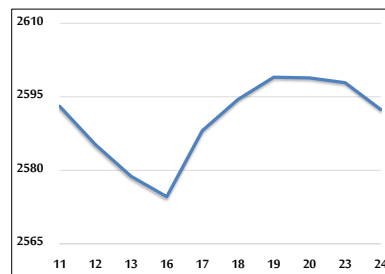
### VALUE TRADED FROM 11/2 TO 24/2/2025



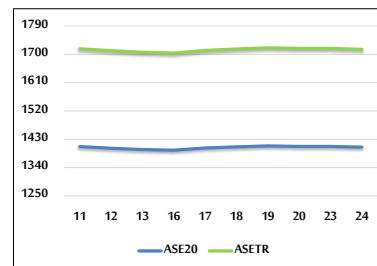
### VALUE TRADED BY SECTOR MONDAY 24/2/2025



### GENERAL FREE FLOAT PRICE INDEX FROM 11/2 TO 24/2/2025



### ASE20 and ASETR FREE FLOAT PRICE INDEX FROM 11/2 TO 24/2/2025



### STOCK PRICE INDEX FROM 11/2 TO 24/2/2025

