

Daily Summary for Amman Stock Exchange

VALUE TRADED (JD)

	2024	2025	NET CHANGE	CHANGE (%)
Daily	3,651,129	3,928,398	277,269	7.59%
Cumulative (2/2-23/2)	79,927,393	86,769,845	6,842,452	8.56%
Cumulative (2/1-23/2)	186,169,566	228,483,492	42,313,926	22.73%

NO. OF SHARES TRADED

	2024	2025	NET CHANGE	CHANGE (%)
Daily	3,433,750	1,999,866	-1,433,884	-41.76%
Cumulative (2/2-23/2)	60,179,661	47,069,532	-13,110,129	-21.78%
Cumulative (2/1-23/2)	153,312,652	121,482,058	-31,830,594	-20.76%

NO. OF TRANSACTIONS

	2024	2025	NET CHANGE	CHANGE (%)
Daily	2,443	1,539	-904	-37.00%
Cumulative (2/2-23/2)	36,381	33,217	-3,164	-8.70%
Cumulative (2/1-23/2)	95,853	80,757	-15,096	-15.75%

SOME FINANCIAL RATIOS FOR THE ASE (23/2/2025)

SECTOR	P/E	P/BV	DIVIDEND YIELD (%)	TURNOVER (%)
FINANCIAL	7.617	0.770	6.068	0.027
SERVICES	12.371	1.328	5.785	0.060
INDUSTRY	10.595	1.764	6.396	0.014
OVERALL	8.527	1.063	6.447	0.032

STOCK PRICE INDEX WEIGHTED BY FREE FLOAT MARKET CAPITALIZATION (1999=1000)

	THURSDAY 20/02/2025	SUNDAY 23/02/2025	% CHANGE	
			DAY BEFORE	YTD
GENERAL	2598.9	2597.9	-0.04%	4.38%
FINANCIAL	2731.7	2735.6	0.14%	3.19%
SERVICES	1770.0	1769.1	-0.05%	4.47%
INDUSTRY	5914.0	5875.2	-0.66%	6.22%

STOCK PRICE INDEX WEIGHTED BY FREE FLOAT MARKET CAPITALIZATION ASE20 (2014=1000)

	1407.2	1407.2	0.00%	4.70%
--	--------	--------	-------	-------

Total Return Index ASETR (2021=1074)

	1718.7	1718.7	0.00%	4.70%
--	--------	--------	-------	-------

STOCK PRICE INDEX WEIGHTED BY MARKET CAPITALIZATION (1991=1000)

	THURSDAY 20/02/2025	SUNDAY 23/02/2025	% CHANGE	
			DAY BEFORE	YTD
GENERAL	4973.0	4961.9	-0.22%	7.09%
BANKS	6944.8	6964.6	0.28%	6.28%
INSURANCE	1410.1	1413.2	0.22%	2.70%
SERVICES	895.8	895.8	0.00%	3.72%
INDUSTRY	7405.2	7341.8	-0.86%	8.94%

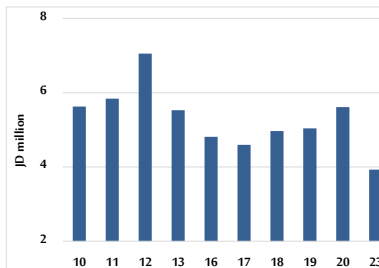
STOCK PRICE MARKET INDEX WEIGHTED BY FREE FLOAT MARKET CAP. (2012=1000)

	THURSDAY 20/02/2025	SUNDAY 23/02/2025	% CHANGE	
			DAY BEFORE	YTD
FIRST MARKET	1462.2	1461.8	-0.03%	4.74%
SECOND MARKET	820.6	818.7	-0.23%	-1.66%

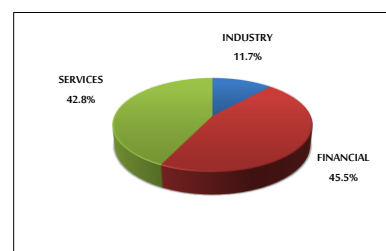
MARKET CAPITALIZATION (JD)

	18,831,671,634	18,793,340,414	-0.20%	6.44%
--	----------------	----------------	--------	-------

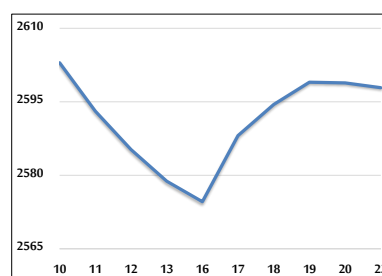
VALUE TRADED FROM 10/2 TO 23/2/2025



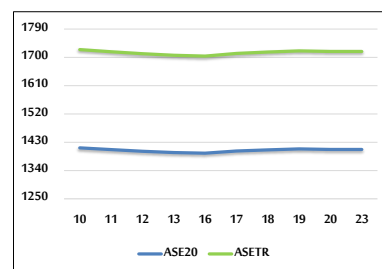
VALUE TRADED BY SECTOR SUNDAY 23/2/2025



GENERAL FREE FLOAT PRICE INDEX FROM 10/2 TO 23/2/2025



ASE20 and ASETR FREE FLOAT PRICE INDEX FROM 10/2 TO 23/2/2025



STOCK PRICE INDEX FROM 10/2 TO 23/2/2025

