

Daily Summary for Amman Stock Exchange

VALUE TRADED (JD)

	2024	2025	NET CHANGE	CHANGE (%)
Daily	7,266,565	7,268,707	2,142	0.03%
Cumulative (2/1-7/1)	19,713,978	31,179,554	11,465,576	58.16%
Cumulative (2/1-7/1)	19,713,978	31,179,554	11,465,576	58.16%

NO. OF SHARES TRADED

	2024	2025	NET CHANGE	CHANGE (%)
Daily	4,593,320	3,350,172	-1,243,148	-27.06%
Cumulative (2/1-7/1)	16,382,807	16,328,477	-54,330	-0.33%
Cumulative (2/1-7/1)	16,382,807	16,328,477	-54,330	-0.33%

NO. OF TRANSACTIONS

	2024	2025	NET CHANGE	CHANGE (%)
Daily	3,379	2,811	-568	-16.81%
Cumulative (2/1-7/1)	11,688	10,416	-1,272	-10.88%
Cumulative (2/1-7/1)	11,688	10,416	-1,272	-10.88%

SOME FINANCIAL RATIOS FOR THE ASE (7/1/2025)

SECTOR	P/E	P/BV	DIVIDEND YIELD (%)	TURNOVER (%)
FINANCIAL	8.592	0.791	5.636	0.038
SERVICES	13.097	1.305	5.944	0.076
INDUSTRY	10.268	1.705	6.616	0.098
OVERALL	9.043	1.068	6.344	0.053

STOCK PRICE INDEX WEIGHTED BY FREE FLOAT MARKET CAPITALIZATION (1999=1000)

	MONDAY 06/01/2025	TUESDAY 07/01/2025	% CHANGE	
			DAY BEFORE	YTD
GENERAL	2560.9	2563.9	0.12%	3.02%
FINANCIAL	2727.2	2723.8	-0.13%	2.75%
SERVICES	1731.6	1729.3	-0.13%	2.12%
INDUSTRY	5694.9	5769.4	1.31%	4.30%

STOCK PRICE INDEX WEIGHTED BY FREE FLOAT MARKET CAPITALIZATION ASE20 (2014=1000)

	1385.6	1386.3	0.05%	3.15%
--	--------	--------	-------	-------

Total Return Index ASETR (2021=1074)

	1692.3	1693.2	0.05%	3.15%
--	--------	--------	-------	-------

STOCK PRICE INDEX WEIGHTED BY MARKET CAPITALIZATION (1991=1000)

	MONDAY 06/01/2025	TUESDAY 07/01/2025	% CHANGE	
			DAY BEFORE	YTD
GENERAL	4790.7	4827.9	0.78%	4.19%
BANKS	6828.5	6818.7	-0.14%	4.05%
INSURANCE	1378.9	1380.6	0.12%	0.33%
SERVICES	876.6	879.1	0.29%	1.79%
INDUSTRY	6943.6	7082.2	2.00%	5.09%

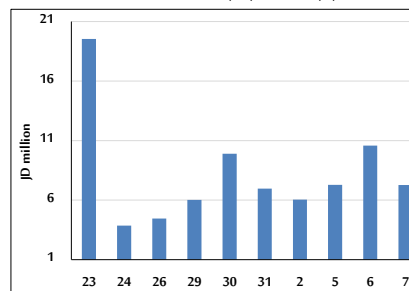
STOCK PRICE MARKET INDEX WEIGHTED BY FREE FLOAT MARKET CAP. (2012=1000)

	MONDAY 06/01/2025	TUESDAY 07/01/2025	% CHANGE	
			DAY BEFORE	YTD
FIRST MARKET	1437.2	1438.6	0.10%	3.08%
SECOND MARKET	840.5	844.5	0.48%	1.44%

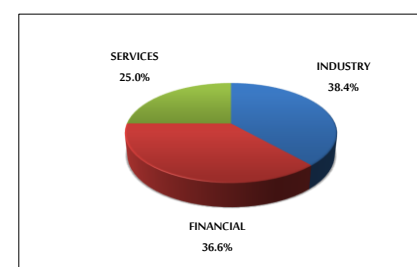
MARKET CAPITALIZATION (JD)

	18,215,237,427	18,343,120,927	0.70%	3.89%
--	----------------	----------------	-------	-------

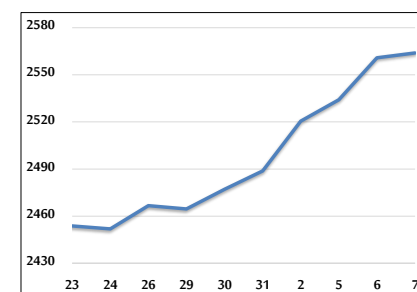
VALUE TRADED FROM 23/12/2024 TO 7/1/2025



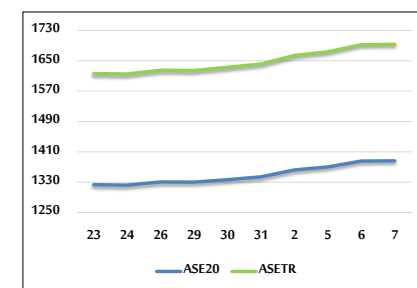
VALUE TRADED BY SECTOR TUESDAY 7/1/2025



GENERAL FREE FLOAT PRICE INDEX FROM 23/12/2024 TO 7/1/2025



ASE20 and ASETR FREE FLOAT PRICE INDEX FROM 23/12/2024 TO 7/1/2025



STOCK PRICE INDEX FROM 23/12/2024 TO 7/1/2025

