

Daily Summary for Amman Stock Exchange

VALUE TRADED (JD)

	2024	2025	NET CHANGE	CHANGE (%)
Daily	4,076,690	10,583,551	6,506,861	159.61%
Cumulative (2/1-6/1)	12,447,413	23,910,847	11,463,434	92.09%
Cumulative (2/1-6/1)	12,447,413	23,910,847	11,463,434	92.09%

NO. OF SHARES TRADED

	2024	2025	NET CHANGE	CHANGE (%)
Daily	3,959,224	6,283,825	2,324,601	58.71%
Cumulative (2/1-6/1)	11,789,487	12,978,305	1,188,818	10.08%
Cumulative (2/1-6/1)	11,789,487	12,978,305	1,188,818	10.08%

NO. OF TRANSACTIONS

	2024	2025	NET CHANGE	CHANGE (%)
Daily	3,061	3,027	-34	-1.11%
Cumulative (2/1-6/1)	8,309	7,605	-704	-8.47%
Cumulative (2/1-6/1)	8,309	7,605	-704	-8.47%

SOME FINANCIAL RATIOS FOR THE ASE (6/1/2025)

SECTOR	P/E	P/BV	DIVIDEND YIELD (%)	TURNOVER (%)
FINANCIAL	8.546	0.791	5.637	0.113
SERVICES	13.097	1.305	5.944	0.091
INDUSTRY	10.058	1.670	6.754	0.052
OVERALL	8.974	1.060	6.394	0.100

STOCK PRICE INDEX WEIGHTED BY FREE FLOAT MARKET CAPITALIZATION (1999=1000)

	SUNDAY 05/01/2025	MONDAY 06/01/2025	% CHANGE	
			DAY BEFORE	YTD
GENERAL	2534.1	2560.9	1.06%	2.90%
FINANCIAL	2705.0	2727.2	0.82%	2.88%
SERVICES	1716.3	1731.6	0.89%	2.26%
INDUSTRY	5590.7	5694.9	1.86%	2.96%

STOCK PRICE INDEX WEIGHTED BY FREE FLOAT MARKET CAPITALIZATION ASE20 (2014=1000)

	1370.3	1385.6	1.12%	3.10%
--	--------	--------	-------	-------

Total Return Index ASETR (2021=1074)

	1673.6	1692.3	1.12%	3.10%
--	--------	--------	-------	-------

STOCK PRICE INDEX WEIGHTED BY MARKET CAPITALIZATION (1991=1000)

	SUNDAY 05/01/2025	MONDAY 06/01/2025	% CHANGE	
			DAY BEFORE	YTD
GENERAL	4721.0	4790.7	1.48%	3.39%
BANKS	6744.6	6828.5	1.24%	4.20%
INSURANCE	1378.0	1378.9	0.07%	0.21%
SERVICES	873.0	876.6	0.41%	1.50%
INDUSTRY	6802.9	6943.6	2.07%	3.04%

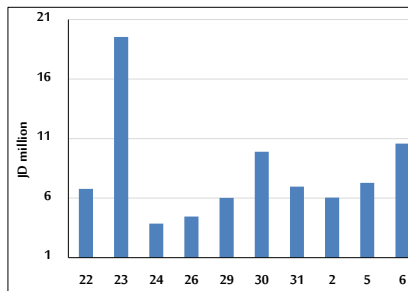
STOCK PRICE MARKET INDEX WEIGHTED BY FREE FLOAT MARKET CAP. (2012=1000)

	SUNDAY 05/01/2025	MONDAY 06/01/2025	% CHANGE	
			DAY BEFORE	YTD
FIRST MARKET	1421.9	1437.2	1.08%	2.98%
SECOND MARKET	838.5	840.5	0.23%	0.95%

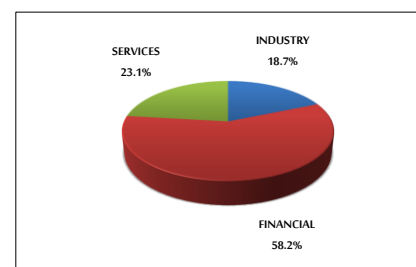
MARKET CAPITALIZATION (JD)

	17,963,050,230	18,215,237,427	1.40%	3.17%
--	----------------	----------------	-------	-------

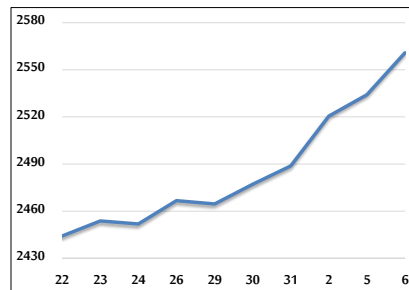
VALUE TRADED FROM 22/12/2024 TO 6/1/2025



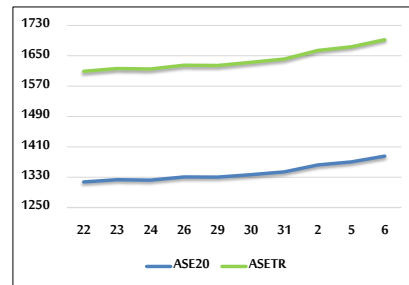
VALUE TRADED BY SECTOR MONDAY 6/1/2025



GENERAL FREE FLOAT PRICE INDEX FROM 22/12/2024 TO 6/1/2025



ASE20 and ASETR FREE FLOAT PRICE INDEX FROM 22/12/2024 TO 6/1/2025



STOCK PRICE INDEX FROM 22/12/2024 TO 6/1/2025

