

### Daily Summary for Amman Stock Exchange

VALUE TRADED (JD )

	2023	2024	NET CHANGE	CHANGE (%)
Daily	3,345,987	3,093,298	-252,689	-7.55%
Cumulative (1/12-12/12)	48,114,188	35,997,562	-12,116,626	-25.18%
Cumulative (2/1-12/12)	1,405,676,573	1,102,328,031	-303,348,542	-21.58%

NO. OF SHARES TRADED

	2023	2024	NET CHANGE	CHANGE (%)
Daily	4,329,841	2,436,419	-1,893,422	-43.73%
Cumulative (1/12-12/12)	38,444,913	26,325,962	-12,118,951	-31.52%
Cumulative (2/1-12/12)	1,065,645,163	825,423,310	-240,221,853	-22.54%

NO. OF TRANSACTIONS

	2023	2024	NET CHANGE	CHANGE (%)
Daily	2,399	1,608	-791	-32.97%
Cumulative (1/12-12/12)	22,584	17,782	-4,802	-21.26%
Cumulative (2/1-12/12)	656,671	519,814	-136,857	-20.84%

SOME FINANCIAL RATIOS FOR THE ASE (12/12/2024)

SECTOR	P/E	P/BV	DIVIDEND YIELD (%)	TURNOVER (%)
FINANCIAL	8.011	0.743	6.000	0.030
SERVICES	12.646	1.260	6.156	0.050
INDUSTRY	9.303	1.544	7.302	0.069
OVERALL	8.489	0.984	6.788	0.039

STOCK PRICE INDEX WEIGHTED BY FREE FLOAT MARKET CAPITALIZATION (1999=1000)

	WEDNESDAY 11/12/2024	THURSDAY 12/12/2024	% CHANGE	
			DAY BEFORE	YTD
GENERAL	2410.8	2418.7	0.33%	-0.51%
FINANCIAL	2589.7	2595.0	0.20%	-4.91%
SERVICES	1651.1	1656.9	0.35%	0.78%
INDUSTRY	5221.8	5244.4	0.43%	11.14%

STOCK PRICE INDEX WEIGHTED BY FREE FLOAT MARKET CAPITALIZATION ASE20 (2014=1000)

	1298.1	1303.4	0.41%	-0.41%
--	--------	--------	-------	--------

Total Return Index ASETR (2021=1074)

	1585.5	1592.0	0.41%	6.95%
--	--------	--------	-------	-------

STOCK PRICE INDEX WEIGHTED BY MARKET CAPITALIZATION (1991=1000)

	WEDNESDAY 11/12/2024	THURSDAY 12/12/2024	% CHANGE	
			DAY BEFORE	YTD
GENERAL	4462.1	4478.3	0.36%	1.40%
BANKS	6359.6	6370.3	0.17%	-5.42%
INSURANCE	1383.3	1382.8	-0.04%	7.61%
SERVICES	851.8	851.2	-0.07%	-3.12%
INDUSTRY	6377.3	6425.9	0.76%	12.60%

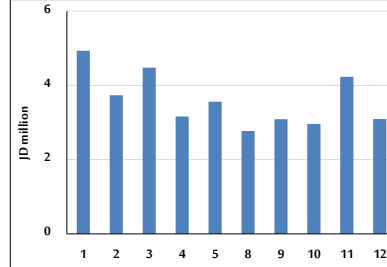
STOCK PRICE MARKET INDEX WEIGHTED BY FREE FLOAT MARKET CAP. (2012=1000)

	WEDNESDAY 11/12/2024	THURSDAY 12/12/2024	% CHANGE	
			DAY BEFORE	YTD
FIRST MARKET	1350.0	1355.0	0.37%	-0.29%
SECOND MARKET	828.3	824.8	-0.43%	-4.57%

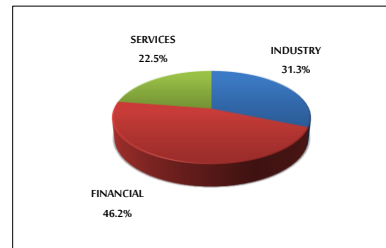
MARKET CAPITALIZATION (JD)

	17,057,720,896	17,113,637,486	0.33%	1.03%
--	----------------	----------------	-------	-------

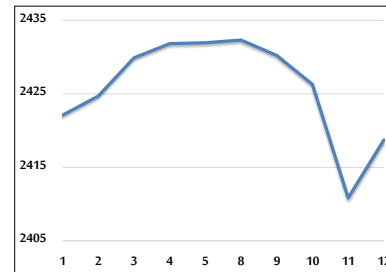
VALUE TRADED FROM 1/12 TO 12/12/2024



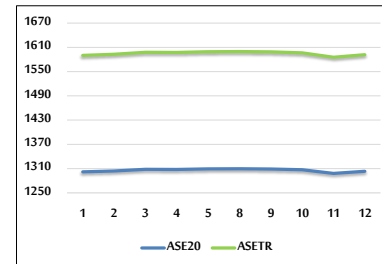
VALUE TRADED BY SECTOR THURSDAY 12/12/2024



GENERAL FREE FLOAT PRICE INDEX FROM 1/12 TO 12/12/2024



ASE20 and ASETR FREE FLOAT PRICE INDEX FROM 1/12 TO 12/12/2024



STOCK PRICE INDEX FROM 1/12 TO 12/12/2024

