

Daily Summary for Amman Stock Exchange

VALUE TRADED (JD)

	2023	2024	NET CHANGE	CHANGE (%)
Daily	3,321,572	4,228,308	906,736	27.30%
Cumulative (1/12-11/12)	44,768,201	32,904,264	-11,863,937	-26.50%
Cumulative (2/1-11/12)	1,402,330,586	1,099,234,733	-303,095,853	-21.61%

NO. OF SHARES TRADED

	2023	2024	NET CHANGE	CHANGE (%)
Daily	3,207,491	2,400,139	-807,352	-25.17%
Cumulative (1/12-11/12)	34,115,072	23,889,543	-10,225,529	-29.97%
Cumulative (2/1-11/12)	1,061,315,322	822,986,891	-238,328,431	-22.46%

NO. OF TRANSACTIONS

	2023	2024	NET CHANGE	CHANGE (%)
Daily	2,438	1,689	-749	-30.72%
Cumulative (1/12-11/12)	20,185	16,174	-4,011	-19.87%
Cumulative (2/1-11/12)	654,272	518,206	-136,066	-20.80%

SOME FINANCIAL RATIOS FOR THE ASE (11/12/2024)

SECTOR	P/E	P/BV	DIVIDEND YIELD (%)	TURNOVER (%)
FINANCIAL	8.001	0.742	6.007	0.030
SERVICES	12.620	1.257	6.168	0.056
INDUSTRY	9.241	1.534	7.351	0.055
OVERALL	8.459	0.981	6.812	0.038

STOCK PRICE INDEX WEIGHTED BY FREE FLOAT MARKET CAPITALIZATION (1999=1000)

	TUESDAY 10/12/2024	WEDNESDAY 11/12/2024	% CHANGE	
			DAY BEFORE	YTD
GENERAL	2426.3	2410.8	-0.64%	-0.84%
FINANCIAL	2607.0	2589.7	-0.66%	-5.10%
SERVICES	1658.4	1651.1	-0.44%	0.43%
INDUSTRY	5245.7	5221.8	-0.46%	10.66%

STOCK PRICE INDEX WEIGHTED BY FREE FLOAT MARKET CAPITALIZATION ASE20 (2014=1000)

	1307.0	1298.1	-0.68%	-0.82%
--	--------	--------	--------	--------

Total Return Index ASETR (2021=1074)

	1596.4	1585.5	-0.68%	6.52%
--	--------	--------	--------	-------

STOCK PRICE INDEX WEIGHTED BY MARKET CAPITALIZATION (1991=1000)

	TUESDAY 10/12/2024	WEDNESDAY 11/12/2024	% CHANGE	
			DAY BEFORE	YTD
GENERAL	4479.4	4462.1	-0.39%	1.04%
BANKS	6381.8	6359.6	-0.35%	-5.58%
INSURANCE	1368.8	1383.3	1.06%	7.65%
SERVICES	856.3	851.8	-0.53%	-3.05%
INDUSTRY	6403.0	6377.3	-0.40%	11.75%

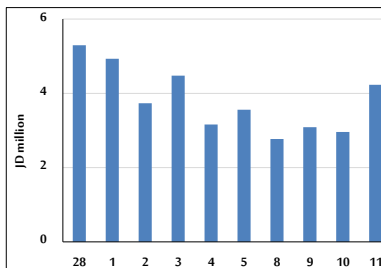
STOCK PRICE MARKET INDEX WEIGHTED BY FREE FLOAT MARKET CAP. (2012=1000)

	TUESDAY 10/12/2024	WEDNESDAY 11/12/2024	% CHANGE	
			DAY BEFORE	YTD
FIRST MARKET	1358.8	1350.0	-0.64%	-0.66%
SECOND MARKET	834.2	828.3	-0.70%	-4.15%

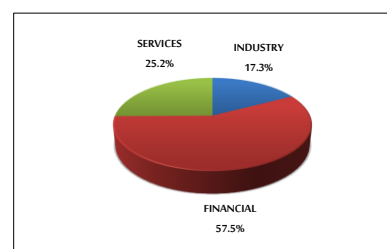
MARKET CAPITALIZATION (JD)

	17,110,198,585	17,057,720,896	-0.31%	0.70%
--	----------------	----------------	--------	-------

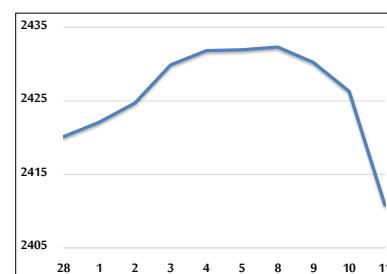
VALUE TRADED FROM 28/11 TO 11/12/2024



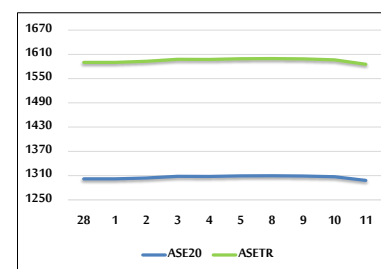
VALUE TRADED BY SECTOR WEDNESDAY 11/12/2024



GENERAL FREE FLOAT PRICE INDEX FROM 28/11 TO 11/12/2024



ASE20 and ASETR FREE FLOAT PRICE INDEX FROM 28/11 TO 11/12/2024



STOCK PRICE INDEX FROM 28/11 TO 11/12/2024

