

## Daily Summary for Amman Stock Exchange

### VALUE TRADED (JD)

	2023	2024	NET CHANGE	CHANGE (%)
Daily	2,992,350	2,770,028	-222,322	-7.43%
Cumulative (1/12-8/12)	36,753,675	22,629,613	-14,124,062	-38.43%
Cumulative (2/1-8/12)	1,394,316,060	1,088,960,082	-305,355,978	-21.90%

### NO. OF SHARES TRADED

	2023	2024	NET CHANGE	CHANGE (%)
Daily	3,649,045	1,637,334	-2,011,711	-55.13%
Cumulative (1/12-8/12)	26,197,318	17,509,265	-8,688,053	-33.16%
Cumulative (2/1-8/12)	1,053,397,568	816,606,613	-236,790,955	-22.48%

### NO. OF TRANSACTIONS

	2023	2024	NET CHANGE	CHANGE (%)
Daily	1,857	1,424	-433	-23.32%
Cumulative (1/12-8/12)	14,197	11,044	-3,153	-22.21%
Cumulative (2/1-8/12)	648,284	513,076	-135,208	-20.86%

### SOME FINANCIAL RATIOS FOR THE ASE (8/12/2024)

SECTOR	P/E	P/BV	DIVIDEND YIELD (%)	TURNOVER (%)
FINANCIAL	8.016	0.745	6.006	0.017
SERVICES	12.690	1.264	6.134	0.042
INDUSTRY	9.314	1.546	7.293	0.048
OVERALL	8.521	0.988	6.762	0.026

### STOCK PRICE INDEX WEIGHTED BY FREE FLOAT MARKET CAPITALIZATION (1999=1000)

	THURSDAY 05/12/2024	SUNDAY 08/12/2024	% CHANGE	
			DAY BEFORE	YTD
GENERAL	2432.0	2432.3	0.02%	0.05%
FINANCIAL	2608.5	2609.7	0.05%	-4.37%
SERVICES	1664.5	1663.0	-0.09%	1.16%
INDUSTRY	5278.9	5278.0	-0.02%	11.85%

### STOCK PRICE INDEX WEIGHTED BY FREE FLOAT MARKET CAPITALIZATION ASE20 (2014=1000)

	1309.2	1309.7	0.04%	0.06%
--	--------	--------	-------	-------

### Total Return Index ASETR (2021=1074)

	1599.0	1599.6	0.04%	7.47%
--	--------	--------	-------	-------

### STOCK PRICE INDEX WEIGHTED BY MARKET CAPITALIZATION (1991=1000)

	THURSDAY 05/12/2024	SUNDAY 08/12/2024	% CHANGE	
			DAY BEFORE	YTD
GENERAL	4496.1	4495.2	-0.02%	1.78%
BANKS	6386.1	6386.1	0.00%	-5.19%
INSURANCE	1382.6	1383.0	0.03%	7.63%
SERVICES	857.8	858.5	0.08%	-2.29%
INDUSTRY	6453.7	6449.0	-0.07%	13.01%

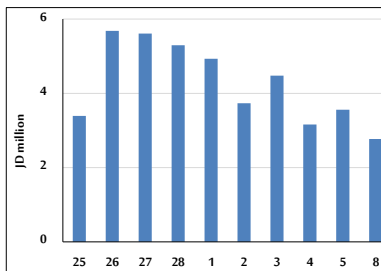
### STOCK PRICE MARKET INDEX WEIGHTED BY FREE FLOAT MARKET CAP. (2012=1000)

	THURSDAY 05/12/2024	SUNDAY 08/12/2024	% CHANGE	
			DAY BEFORE	YTD
FIRST MARKET	1361.3	1361.9	0.04%	0.22%
SECOND MARKET	838.9	835.9	-0.36%	-3.28%

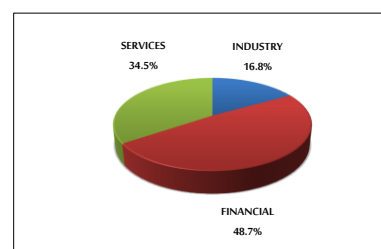
### MARKET CAPITALIZATION (JD)

	17,156,744,044	17,153,711,237	-0.02%	1.27%
--	----------------	----------------	--------	-------

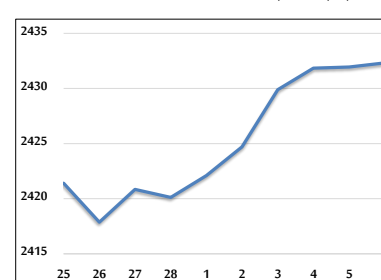
### VALUE TRADED FROM 25/11 TO 8/12/2024



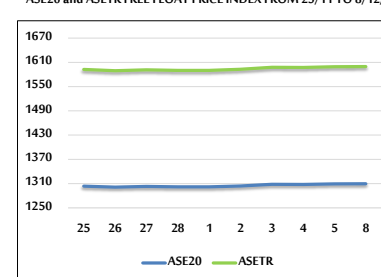
### VALUE TRADED BY SECTOR SUNDAY 8/12/2024



### GENERAL FREE FLOAT PRICE INDEX FROM 25/11 TO 8/12/2024



### ASE20 and ASETR FREE FLOAT PRICE INDEX FROM 25/11 TO 8/12/2024



### STOCK PRICE INDEX FROM 25/11 TO 8/12/2024

