

### Daily Summary for Amman Stock Exchange

VALUE TRADED (JD)

	2023	2024	NET CHANGE	CHANGE (%)
Daily	18,621,373	3,159,396	-15,461,977	-83.03%
Cumulative (1/12-4/12)	29,963,664	16,299,492	-13,664,172	-45.60%
Cumulative (2/1-4/12)	1,387,526,049	1,082,629,961	-304,896,088	-21.97%

NO. OF SHARES TRADED

	2023	2024	NET CHANGE	CHANGE (%)
Daily	7,263,706	2,308,622	-4,955,084	-68.22%
Cumulative (1/12-4/12)	19,122,723	13,489,710	-5,633,013	-29.46%
Cumulative (2/1-4/12)	1,046,322,973	812,587,058	-233,735,915	-22.34%

NO. OF TRANSACTIONS

	2023	2024	NET CHANGE	CHANGE (%)
Daily	2,340	1,669	-671	-28.68%
Cumulative (1/12-4/12)	9,841	7,965	-1,876	-19.06%
Cumulative (2/1-4/12)	643,928	509,997	-133,931	-20.80%

SOME FINANCIAL RATIOS FOR THE ASE (4/12/2024)

SECTOR	P/E	P/BV	DIVIDEND YIELD (%)	TURNOVER (%)
FINANCIAL	8.020	0.746	6.003	0.026
SERVICES	12.672	1.263	6.143	0.073
INDUSTRY	9.331	1.549	7.280	0.040
OVERALL	8.523	0.988	6.761	0.037

STOCK PRICE INDEX WEIGHTED BY FREE FLOAT MARKET CAPITALIZATION (1999=1000)

	TUESDAY 03/12/2024	WEDNESDAY 04/12/2024	% CHANGE	
			DAY BEFORE	YTD
GENERAL	2429.9	2431.8	0.08%	0.03%
FINANCIAL	2607.6	2610.2	0.10%	-4.35%
SERVICES	1658.7	1661.1	0.15%	1.04%
INDUSTRY	5299.2	5292.6	-0.12%	12.16%

STOCK PRICE INDEX WEIGHTED BY FREE FLOAT MARKET CAPITALIZATION ASE20 (2014=1000)

	1308.1	1307.8	-0.02%	-0.08%
--	--------	--------	--------	--------

Total Return Index ASETR (2021=1074)

	1597.7	1597.3	-0.02%	7.31%
--	--------	--------	--------	-------

STOCK PRICE INDEX WEIGHTED BY MARKET CAPITALIZATION (1991=1000)

	TUESDAY 03/12/2024	WEDNESDAY 04/12/2024	% CHANGE	
			DAY BEFORE	YTD
GENERAL	4494.9	4495.9	0.02%	1.80%
BANKS	6383.4	6383.7	0.00%	-5.23%
INSURANCE	1377.6	1387.5	0.72%	7.99%
SERVICES	856.5	858.6	0.24%	-2.28%
INDUSTRY	6457.4	6454.1	-0.05%	13.10%

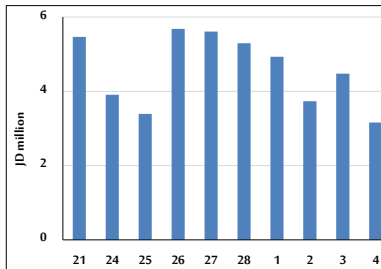
STOCK PRICE MARKET INDEX WEIGHTED BY FREE FLOAT MARKET CAP. (2012=1000)

	TUESDAY 03/12/2024	WEDNESDAY 04/12/2024	% CHANGE	
			DAY BEFORE	YTD
FIRST MARKET	1360.1	1360.6	0.04%	0.12%
SECOND MARKET	847.9	848.5	0.07%	-1.83%

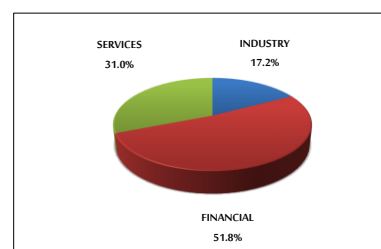
MARKET CAPITALIZATION (JD)

	17,162,337,835	17,165,533,423	0.02%	1.34%
--	----------------	----------------	-------	-------

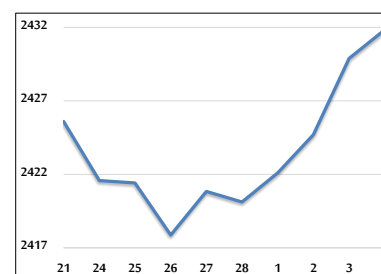
VALUE TRADED FROM 21/11 TO 4/12/2024



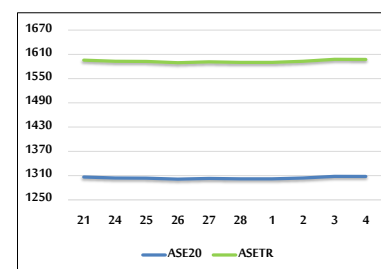
VALUE TRADED BY SECTOR WEDNESDAY 4/12/2024



GENERAL FREE FLOAT PRICE INDEX FROM 21/11 TO 4/12/2024



ASE20 and ASETR FREE FLOAT PRICE INDEX FROM 21/11 TO 4/12/2024



STOCK PRICE INDEX FROM 21/11 TO 4/12/2024

