

Daily Summary for Amman Stock Exchange

VALUE TRADED (JD)

	2023	2024	NET CHANGE	CHANGE (%)
Daily	4,175,557	4,283,952	108,395	2.60%
Cumulative (1/12-18/12)	64,566,822	57,149,503	-7,417,319	-11.49%
Cumulative (2/1-18/12)	1,422,129,207	1,123,479,972	-298,649,235	-21.00%

NO. OF SHARES TRADED

	2023	2024	NET CHANGE	CHANGE (%)
Daily	4,088,179	3,143,745	-944,434	-23.10%
Cumulative (1/12-18/12)	55,633,845	40,703,381	-14,930,464	-26.84%
Cumulative (2/1-18/12)	1,082,834,095	839,800,729	-243,033,366	-22.44%

NO. OF TRANSACTIONS

	2023	2024	NET CHANGE	CHANGE (%)
Daily	2,939	1,724	-1,215	-41.34%
Cumulative (1/12-18/12)	33,928	24,999	-8,929	-26.32%
Cumulative (2/1-18/12)	668,015	527,031	-140,984	-21.10%

SOME FINANCIAL RATIOS FOR THE ASE (18/12/2024)

SECTOR	P/E	P/BV	DIVIDEND YIELD (%)	TURNOVER (%)
FINANCIAL	8.030	0.743	6.000	0.036
SERVICES	12.625	1.258	6.166	0.078
INDUSTRY	9.590	1.592	7.083	0.081
OVERALL	8.585	0.995	6.712	0.050

STOCK PRICE INDEX WEIGHTED BY FREE FLOAT MARKET CAPITALIZATION (1999=1000)

	TUESDAY 17/12/2024	WEDNESDAY 18/12/2024	% CHANGE	
			DAY BEFORE	YTD
GENERAL	2435.0	2435.0	0.00%	0.16%
FINANCIAL	2594.4	2597.8	0.13%	-4.81%
SERVICES	1656.3	1655.3	-0.06%	0.68%
INDUSTRY	5433.3	5413.4	-0.36%	14.72%

STOCK PRICE INDEX WEIGHTED BY FREE FLOAT MARKET CAPITALIZATION ASE20 (2014=1000)

	1313.2	1313.7	0.04%	0.38%
--	--------	--------	-------	-------

Total Return Index ASETR (2021=1074)

	1603.9	1604.6	0.04%	7.80%
--	--------	--------	-------	-------

STOCK PRICE INDEX WEIGHTED BY MARKET CAPITALIZATION (1991=1000)

	TUESDAY 17/12/2024	WEDNESDAY 18/12/2024	% CHANGE	
			DAY BEFORE	YTD
GENERAL	4534.1	4529.1	-0.11%	2.55%
BANKS	6367.2	6370.5	0.05%	-5.42%
INSURANCE	1390.1	1390.1	0.00%	8.18%
SERVICES	849.6	848.9	-0.08%	-3.38%
INDUSTRY	6633.1	6612.8	-0.31%	15.88%

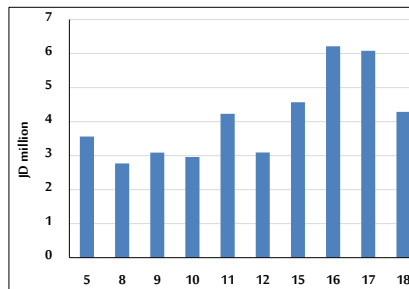
STOCK PRICE MARKET INDEX WEIGHTED BY FREE FLOAT MARKET CAP. (2012=1000)

	TUESDAY 17/12/2024	WEDNESDAY 18/12/2024	% CHANGE	
			DAY BEFORE	YTD
FIRST MARKET	1365.0	1364.9	-0.01%	0.44%
SECOND MARKET	822.3	823.3	0.13%	-4.73%

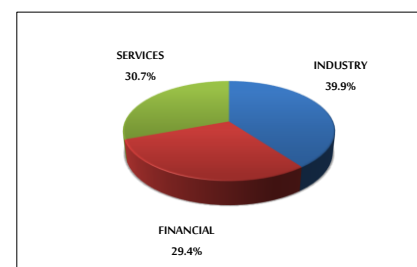
MARKET CAPITALIZATION (JD)

	17,314,810,167	17,295,661,911	-0.11%	2.10%
--	----------------	----------------	--------	-------

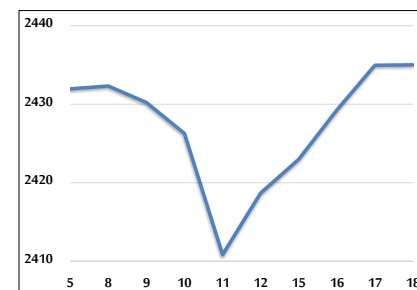
VALUE TRADED FROM 5/12 TO 18/12/2024



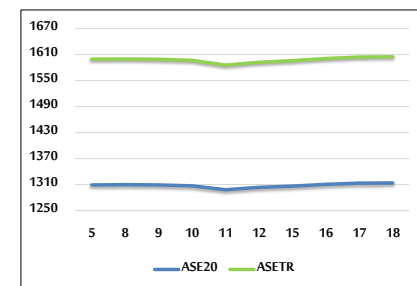
VALUE TRADED BY SECTOR WEDNESDAY 18/12/2024



GENERAL FREE FLOAT PRICE INDEX FROM 5/12 TO 18/12/2024



ASE20 and ASETR FREE FLOAT PRICE INDEX FROM 5/12 TO 18/12/2024



STOCK PRICE INDEX FROM 5/12 TO 18/12/2024

