

## Daily Summary for Amman Stock Exchange

### VALUE TRADED (JD)

	2023	2024	NET CHANGE	CHANGE (%)
Daily	4,177,681	6,082,004	1,904,323	45.58%
Cumulative (1/12-17/12)	60,391,265	52,865,551	-7,525,714	-12.46%
Cumulative (2/1-17/12)	1,417,953,650	1,119,196,020	-298,757,630	-21.07%

### NO. OF SHARES TRADED

	2023	2024	NET CHANGE	CHANGE (%)
Daily	4,732,194	3,388,837	-1,343,357	-28.39%
Cumulative (1/12-17/12)	51,545,666	37,559,636	-13,986,030	-27.13%
Cumulative (2/1-17/12)	1,078,745,916	836,656,984	-242,088,932	-22.44%

### NO. OF TRANSACTIONS

	2023	2024	NET CHANGE	CHANGE (%)
Daily	2,800	1,969	-831	-29.68%
Cumulative (1/12-17/12)	30,989	23,275	-7,714	-24.89%
Cumulative (2/1-17/12)	665,076	525,307	-139,769	-21.02%

### SOME FINANCIAL RATIOS FOR THE ASE (17/12/2024)

SECTOR	P/E	P/BV	DIVIDEND YIELD (%)	TURNOVER (%)
FINANCIAL	8.027	0.742	6.002	0.037
SERVICES	12.630	1.258	6.163	0.092
INDUSTRY	9.621	1.597	7.060	0.081
OVERALL	8.594	0.996	6.705	0.054

### STOCK PRICE INDEX WEIGHTED BY FREE FLOAT MARKET CAPITALIZATION (1999=1000)

	MONDAY 16/12/2024	TUESDAY 17/12/2024	% CHANGE	
			DAY BEFORE	YTD
GENERAL	2429.3	2435.0	0.24%	0.15%
FINANCIAL	2595.0	2594.4	-0.02%	-4.93%
SERVICES	1655.2	1656.3	0.07%	0.75%
INDUSTRY	5370.0	5433.3	1.18%	15.14%

### STOCK PRICE INDEX WEIGHTED BY FREE FLOAT MARKET CAPITALIZATION ASE20 (2014=1000)

	1310.3	1313.2	0.22%	0.34%
--	--------	--------	-------	-------

### Total Return Index ASETR (2021=1074)

	1600.4	1603.9	0.22%	7.76%
--	--------	--------	-------	-------

### STOCK PRICE INDEX WEIGHTED BY MARKET CAPITALIZATION (1991=1000)

	MONDAY 16/12/2024	TUESDAY 17/12/2024	% CHANGE	
			DAY BEFORE	YTD
GENERAL	4515.3	4534.1	0.42%	2.67%
BANKS	6368.7	6367.2	-0.02%	-5.47%
INSURANCE	1391.6	1390.1	-0.11%	8.18%
SERVICES	851.2	849.6	-0.19%	-3.30%
INDUSTRY	6559.7	6633.1	1.12%	16.23%

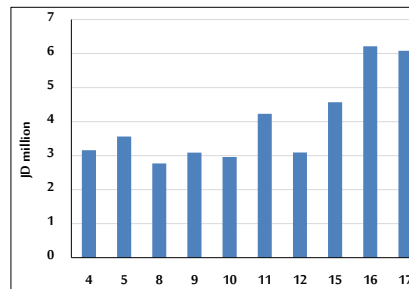
### STOCK PRICE MARKET INDEX WEIGHTED BY FREE FLOAT MARKET CAP. (2012=1000)

	MONDAY 16/12/2024	TUESDAY 17/12/2024	% CHANGE	
			DAY BEFORE	YTD
FIRST MARKET	1361.8	1365.0	0.23%	0.44%
SECOND MARKET	821.0	822.3	0.16%	-4.86%

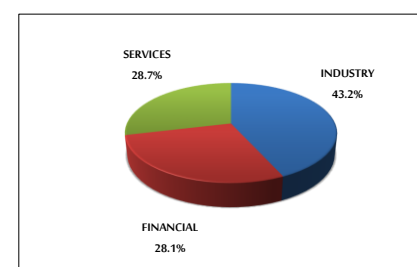
### MARKET CAPITALIZATION (JD)

	17,248,123,345	17,314,810,167	0.39%	2.22%
--	----------------	----------------	-------	-------

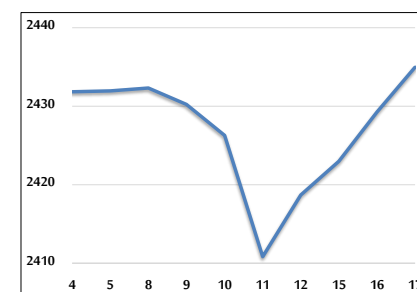
### VALUE TRADED FROM 4/12 TO 17/12/2024



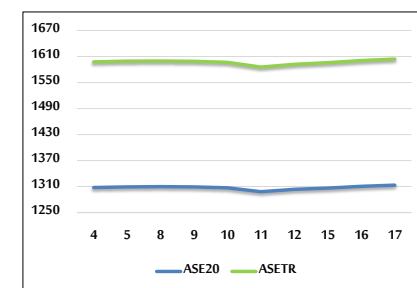
### VALUE TRADED BY SECTOR TUESDAY 17/12/2024



### GENERAL FREE FLOAT PRICE INDEX FROM 4/12 TO 17/12/2024



### ASE20 and ASETR FREE FLOAT PRICE INDEX FROM 4/12 TO 17/12/2024



### STOCK PRICE INDEX FROM 4/12 TO 17/12/2024

