

Daily Summary for Amman Stock Exchange

VALUE TRADED (JD)

	2023	2024	NET CHANGE	CHANGE (%)
Daily	5,271,574	4,474,977	-796,597	-15.11%
Cumulative (1/12-3/12)	11,342,291	13,140,096	1,797,805	15.85%
Cumulative (2/1-3/12)	1,368,904,676	1,079,470,565	-289,434,111	-21.14%

NO. OF SHARES TRADED

	2023	2024	NET CHANGE	CHANGE (%)
Daily	5,387,971	3,378,821	-2,009,150	-37.29%
Cumulative (1/12-3/12)	11,859,017	11,181,088	-677,929	-5.72%
Cumulative (2/1-3/12)	1,039,059,267	810,278,436	-228,780,831	-22.02%

NO. OF TRANSACTIONS

	2023	2024	NET CHANGE	CHANGE (%)
Daily	3,120	2,327	-793	-25.42%
Cumulative (1/12-3/12)	7,501	6,296	-1,205	-16.06%
Cumulative (2/1-3/12)	641,588	508,328	-133,260	-20.77%

SOME FINANCIAL RATIOS FOR THE ASE (3/12/2024)

SECTOR	P/E	P/BV	DIVIDEND YIELD (%)	TURNOVER (%)
FINANCIAL	8.018	0.746	6.004	0.048
SERVICES	12.657	1.261	6.150	0.084
INDUSTRY	9.334	1.549	7.278	0.042
OVERALL	8.521	0.988	6.763	0.054

STOCK PRICE INDEX WEIGHTED BY FREE FLOAT MARKET CAPITALIZATION (1999=1000)

	MONDAY 02/12/2024	TUESDAY 03/12/2024	% CHANGE	
			DAY BEFORE	YTD
GENERAL	2424.7	2429.9	0.21%	-0.05%
FINANCIAL	2599.6	2607.6	0.31%	-4.45%
SERVICES	1655.2	1658.7	0.21%	0.89%
INDUSTRY	5306.1	5299.2	-0.13%	12.30%

STOCK PRICE INDEX WEIGHTED BY FREE FLOAT MARKET CAPITALIZATION ASE20 (2014=1000)

	1304.1	1308.1	0.31%	-0.05%
--	--------	--------	-------	--------

Total Return Index ASETR (2021=1074)

	1592.8	1597.7	0.31%	7.34%
--	--------	--------	-------	-------

STOCK PRICE INDEX WEIGHTED BY MARKET CAPITALIZATION (1991=1000)

	MONDAY 02/12/2024	TUESDAY 03/12/2024	% CHANGE	
			DAY BEFORE	YTD
GENERAL	4497.1	4494.9	-0.05%	1.78%
BANKS	6383.1	6383.4	0.01%	-5.23%
INSURANCE	1376.8	1377.6	0.06%	7.21%
SERVICES	854.2	856.5	0.26%	-2.52%
INDUSTRY	6471.3	6457.4	-0.21%	13.16%

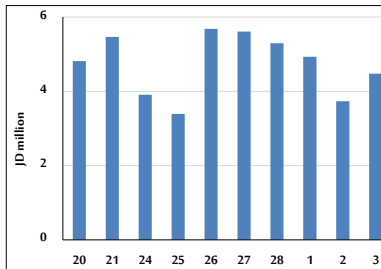
STOCK PRICE MARKET INDEX WEIGHTED BY FREE FLOAT MARKET CAP. (2012=1000)

	MONDAY 02/12/2024	TUESDAY 03/12/2024	% CHANGE	
			DAY BEFORE	YTD
FIRST MARKET	1356.7	1360.1	0.25%	0.08%
SECOND MARKET	849.7	847.9	-0.22%	-1.90%

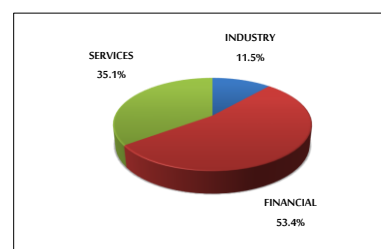
MARKET CAPITALIZATION (JD)

	17,176,193,772	17,162,337,835	-0.08%	1.32%
--	----------------	----------------	--------	-------

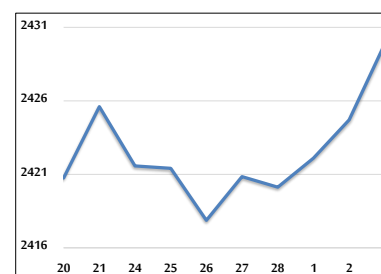
VALUE TRADED FROM 20/11 TO 3/12/2024



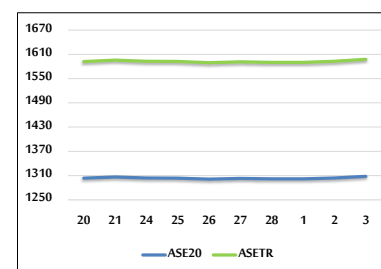
VALUE TRADED BY SECTOR TUESDAY 3/12/2024



GENERAL FREE FLOAT PRICE INDEX FROM 20/11 TO 3/12/2024



ASE20 and ASETR FREE FLOAT PRICE INDEX FROM 20/11 TO 3/12/2024



STOCK PRICE INDEX FROM 20/11 TO 3/12/2024

