

Daily Summary for Amman Stock Exchange

VALUE TRADED (JD)

	2023	2024	NET CHANGE	CHANGE (%)
Daily	3,325,562	3,734,620	409,058	12.30%
Cumulative (1/12-2/12)	6,070,717	8,665,119	2,594,402	42.74%
Cumulative (2/1-2/12)	1,363,633,102	1,074,995,588	-288,637,514	-21.17%

NO. OF SHARES TRADED

	2023	2024	NET CHANGE	CHANGE (%)
Daily	3,103,646	3,916,537	812,891	26.19%
Cumulative (1/12-2/12)	6,471,046	7,802,267	1,331,221	20.57%
Cumulative (2/1-2/12)	1,033,671,296	806,899,615	-226,771,681	-21.94%

NO. OF TRANSACTIONS

	2023	2024	NET CHANGE	CHANGE (%)
Daily	2,391	2,080	-311	-13.01%
Cumulative (1/12-2/12)	4,381	3,969	-412	-9.40%
Cumulative (2/1-2/12)	638,468	506,001	-132,467	-20.75%

SOME FINANCIAL RATIOS FOR THE ASE (2/12/2024)

SECTOR	P/E	P/BV	DIVIDEND YIELD (%)	TURNOVER (%)
FINANCIAL	8.018	0.746	6.004	0.063
SERVICES	12.634	1.259	6.161	0.057
INDUSTRY	9.362	1.554	7.256	0.071
OVERALL	8.525	0.988	6.759	0.063

STOCK PRICE INDEX WEIGHTED BY FREE FLOAT MARKET CAPITALIZATION (1999=1000)

	SUNDAY 01/12/2024	MONDAY 02/12/2024	% CHANGE	
			DAY BEFORE	YTD
GENERAL	2422.1	2424.7	0.11%	-0.27%
FINANCIAL	2602.0	2599.6	-0.09%	-4.74%
SERVICES	1654.3	1655.2	0.05%	0.68%
INDUSTRY	5257.7	5306.1	0.92%	12.45%

STOCK PRICE INDEX WEIGHTED BY FREE FLOAT MARKET CAPITALIZATION ASE20 (2014=1000)

	1301.9	1304.1	0.17%	-0.36%
--	--------	--------	-------	--------

Total Return Index ASETR (2021=1074)

	1590.1	1592.8	0.17%	7.01%
--	--------	--------	-------	-------

STOCK PRICE INDEX WEIGHTED BY MARKET CAPITALIZATION (1991=1000)

	SUNDAY 01/12/2024	MONDAY 02/12/2024	% CHANGE	
			DAY BEFORE	YTD
GENERAL	4475.9	4497.1	0.47%	1.83%
BANKS	6384.1	6383.1	-0.02%	-5.23%
INSURANCE	1384.3	1376.8	-0.54%	7.15%
SERVICES	854.4	854.2	-0.02%	-2.78%
INDUSTRY	6392.2	6471.3	1.24%	13.40%

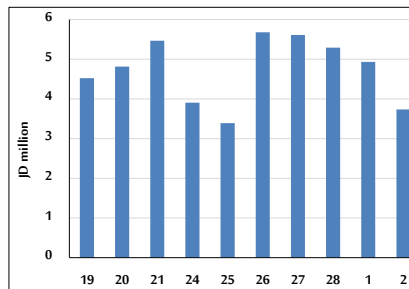
STOCK PRICE MARKET INDEX WEIGHTED BY FREE FLOAT MARKET CAP. (2012=1000)

	SUNDAY 01/12/2024	MONDAY 02/12/2024	% CHANGE	
			DAY BEFORE	YTD
FIRST MARKET	1355.3	1356.7	0.11%	-0.16%
SECOND MARKET	847.3	849.7	0.29%	-1.68%

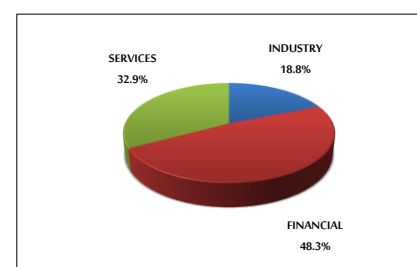
MARKET CAPITALIZATION (JD)

	17,103,888,856	17,176,193,772	0.42%	1.40%
--	----------------	----------------	-------	-------

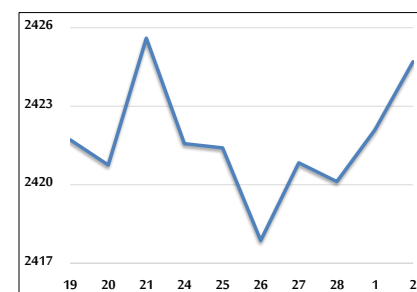
VALUE TRADED FROM 19/11 TO 2/12/2024



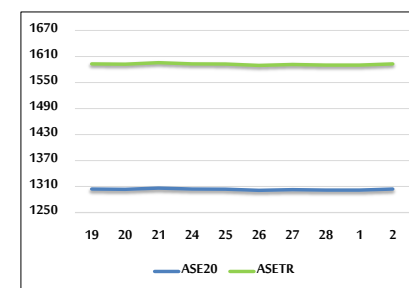
VALUE TRADED BY SECTOR MONDAY 2/12/2024



GENERAL FREE FLOAT PRICE INDEX FROM 19/11 TO 2/12/2024



ASE20 and ASETR FREE FLOAT PRICE INDEX FROM 19/11 TO 2/12/2024



STOCK PRICE INDEX FROM 19/11 TO 2/12/2024

