

## Daily Summary for Amman Stock Exchange

### VALUE TRADED (JD)

	2023	2024	NET CHANGE	CHANGE (%)
Daily	2,398,348	7,052,580	4,654,232	194.06%
Cumulative (3/11-14/11)	32,965,698	49,750,472	16,784,774	50.92%
Cumulative (2/1-14/11)	1,310,741,527	1,020,080,153	-290,661,374	-22.18%

### NO. OF SHARES TRADED

	2023	2024	NET CHANGE	CHANGE (%)
Daily	2,349,872	7,340,808	4,990,936	212.39%
Cumulative (3/11-14/11)	26,308,487	40,073,488	13,765,001	52.32%
Cumulative (2/1-14/11)	969,773,145	758,266,517	-211,506,628	-21.81%

### NO. OF TRANSACTIONS

	2023	2024	NET CHANGE	CHANGE (%)
Daily	2,213	2,143	-70	-3.16%
Cumulative (3/11-14/11)	19,151	22,172	3,021	15.77%
Cumulative (2/1-14/11)	605,204	479,420	-125,784	-20.78%

### SOME FINANCIAL RATIOS FOR THE ASE (14/11/2024)

SECTOR	P/E	P/BV	DIVIDEND YIELD (%)	TURNOVER (%)
FINANCIAL	8.098	0.751	5.947	0.134
SERVICES	12.675	1.263	6.141	0.074
INDUSTRY	9.181	1.516	7.438	0.105
OVERALL	8.488	0.984	6.789	0.118

### STOCK PRICE INDEX WEIGHTED BY FREE FLOAT MARKET CAPITALIZATION (1999=1000)

	WEDNESDAY 13/11/2024	THURSDAY 14/11/2024	% CHANGE	
			DAY BEFORE	YTD
GENERAL	2424.0	2427.8	0.16%	-0.14%
FINANCIAL	2615.4	2618.2	0.11%	-4.06%
SERVICES	1658.8	1660.9	0.12%	1.02%
INDUSTRY	5158.4	5173.2	0.29%	9.63%

### STOCK PRICE INDEX WEIGHTED BY FREE FLOAT MARKET CAPITALIZATION ASE20 (2014=1000)

	1304.4	1306.6	0.17%	-0.17%
--	--------	--------	-------	--------

### Total Return Index ASETR (2021=1074)

	1593.2	1595.9	0.17%	7.22%
--	--------	--------	-------	-------

### STOCK PRICE INDEX WEIGHTED BY MARKET CAPITALIZATION (1991=1000)

	WEDNESDAY 13/11/2024	THURSDAY 14/11/2024	% CHANGE	
			DAY BEFORE	YTD
GENERAL	4466.4	4477.5	0.25%	1.38%
BANKS	6442.0	6440.4	-0.03%	-4.38%
INSURANCE	1380.9	1389.5	0.63%	8.14%
SERVICES	854.9	857.8	0.34%	-2.37%
INDUSTRY	6289.0	6322.9	0.54%	10.80%

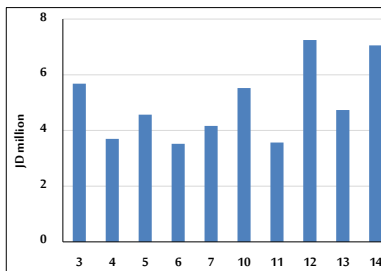
### STOCK PRICE MARKET INDEX WEIGHTED BY FREE FLOAT MARKET CAP. (2012=1000)

	WEDNESDAY 13/11/2024	THURSDAY 14/11/2024	% CHANGE	
			DAY BEFORE	YTD
FIRST MARKET	1356.2	1358.6	0.18%	-0.03%
SECOND MARKET	831.8	833.7	0.23%	-3.54%

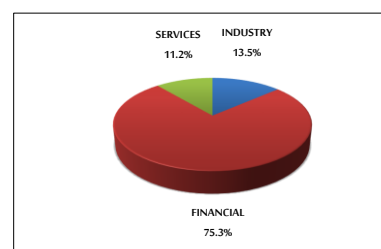
### MARKET CAPITALIZATION (JD)

	17,033,774,053	17,097,428,975	0.37%	0.93%
--	----------------	----------------	-------	-------

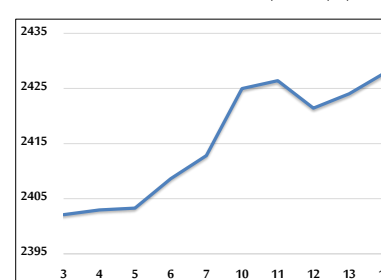
### VALUE TRADED FROM 3/11 TO 14/11/2024



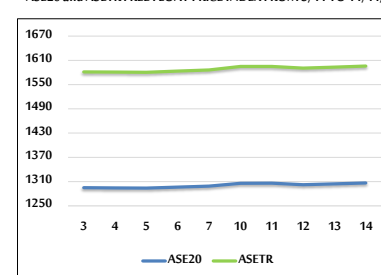
### VALUE TRADED BY SECTOR THURSDAY 14/11/2024



### GENERAL FREE FLOAT PRICE INDEX FROM 3/11 TO 14/11/2024



### ASE20 and ASETR FREE FLOAT PRICE INDEX FROM 3/11 TO 14/11/2024



### STOCK PRICE INDEX FROM 3/11 TO 14/11/2024

