

Daily Summary for Amman Stock Exchange

VALUE TRADED (JD)

	2023	2024	NET CHANGE	CHANGE (%)
Daily	1,591,427	7,247,438	5,656,011	355.40%
Cumulative (3/11-12/11)	28,246,214	37,965,938	9,719,724	34.41%
Cumulative (2/1-12/11)	1,306,022,043	1,008,295,619	-297,726,424	-22.80%

NO. OF SHARES TRADED

	2023	2024	NET CHANGE	CHANGE (%)
Daily	1,485,388	5,708,620	4,223,232	284.32%
Cumulative (3/11-12/11)	22,199,453	29,325,371	7,125,918	32.10%
Cumulative (2/1-12/11)	965,664,111	747,518,400	-218,145,711	-22.59%

NO. OF TRANSACTIONS

	2023	2024	NET CHANGE	CHANGE (%)
Daily	1,408	2,488	1,080	76.70%
Cumulative (3/11-12/11)	15,281	17,873	2,592	16.96%
Cumulative (2/1-12/11)	601,334	475,121	-126,213	-20.99%

SOME FINANCIAL RATIOS FOR THE ASE (12/11/2024)

SECTOR	P/E	P/BV	DIVIDEND YIELD (%)	TURNOVER (%)
FINANCIAL	8.051	0.747	5.982	0.099
SERVICES	12.661	1.261	6.148	0.090
INDUSTRY	9.137	1.509	7.473	0.061
OVERALL	8.445	0.979	6.823	0.092

STOCK PRICE INDEX WEIGHTED BY FREE FLOAT MARKET CAPITALIZATION (1999=1000)

	MONDAY 11/11/2024	TUESDAY 12/11/2024	% CHANGE	
			DAY BEFORE	YTD
GENERAL	2426.4	2421.4	-0.21%	-0.40%
FINANCIAL	2617.2	2612.8	-0.17%	-4.26%
SERVICES	1663.0	1657.9	-0.30%	0.84%
INDUSTRY	5160.2	5148.2	-0.23%	9.10%

STOCK PRICE INDEX WEIGHTED BY FREE FLOAT MARKET CAPITALIZATION ASE20 (2014=1000)

	1306.0	1302.4	-0.27%	-0.49%
--	--------	--------	--------	--------

Total Return Index ASETR (2021=1074)

	1595.1	1590.8	-0.27%	6.87%
--	--------	--------	--------	-------

STOCK PRICE INDEX WEIGHTED BY MARKET CAPITALIZATION (1991=1000)

	MONDAY 11/11/2024	TUESDAY 12/11/2024	% CHANGE	
			DAY BEFORE	YTD
GENERAL	4476.3	4465.1	-0.25%	1.10%
BANKS	6447.3	6431.2	-0.25%	-4.52%
INSURANCE	1375.6	1374.0	-0.12%	6.93%
SERVICES	856.9	857.1	0.02%	-2.45%
INDUSTRY	6314.5	6293.4	-0.33%	10.28%

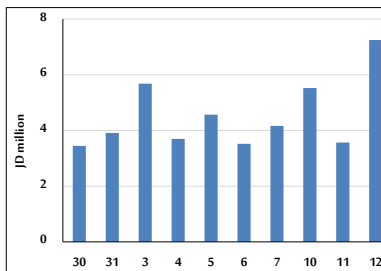
STOCK PRICE MARKET INDEX WEIGHTED BY FREE FLOAT MARKET CAP. (2012=1000)

	MONDAY 11/11/2024	TUESDAY 12/11/2024	% CHANGE	
			DAY BEFORE	YTD
FIRST MARKET	1358.3	1354.5	-0.28%	-0.33%
SECOND MARKET	828.7	833.1	0.53%	-3.60%

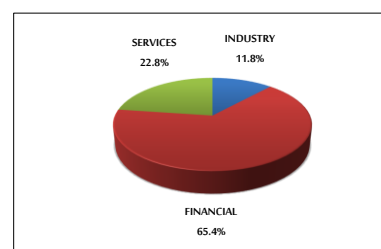
MARKET CAPITALIZATION (JD)

	17,070,184,475	17,028,930,174	-0.24%	0.53%
--	----------------	----------------	--------	-------

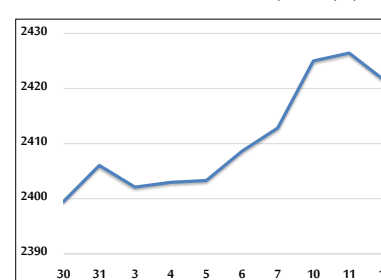
VALUE TRADED FROM 30/10 TO 12/11/2024



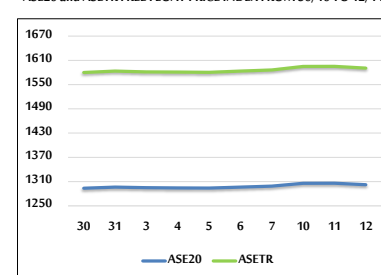
VALUE TRADED BY SECTOR TUESDAY 12/11/2024



GENERAL FREE FLOAT PRICE INDEX FROM 30/10 TO 12/11/2024



ASE20 and ASETR FREE FLOAT PRICE INDEX FROM 30/10 TO 12/11/2024



STOCK PRICE INDEX FROM 30/10 TO 12/11/2024

